

PLATE Ref: No.	PART No.	QUANTITY					STEERING		DESCRIPTION	CHANGE POINT	BULLETIN REFERENCE
		ALL	SI.	SI. Mk I	S2.	S2. Fed.	RH	LH			
	046 E 6030		1						Cylinder Block (697-04) } Cylinder Block (697-04) } Replaced by F046E6376	Up to Eng. No. 0033 From Eng. No. 0034 to 0565	
	046 E 6376		1	1							
	B046 E 6376			1	1			Cylinder Block (697-04)	Up to Eng. No. 0566 to 0866		
EA.1.	F046 E 6376	1						Cylinder Block (697-04) Cylinder Block (821-30)	From Eng. No. 0867 From Eng. No. 0001		
EA.2.	046 E 6028	1						Dipstick Tube			
EA.3.	046 E 6027	1						Dipstick			
EA.4.	046 E 6029	1						Dowel Pin, 2 x 15 x 11 mm.			
EA.5.	046 E 6009	1						Housing - Camshaft Bearing			
EA.6.	046 E 6008	1						Bearing - Camshaft Housing			
EA.7.	046 E 6011	1						Seal Ring - Camshaft Housing 32 x 45 x 10 mm.			
	046 E 6010	2						Bolt, 8 x 52)			
	A046 W 6001	3						Washer) Camshaft Bearing Housing			
	A046 W 6002	3						Washer) to Cylinder Block.			
	046 E 6012	1						Bolt, 8 x 72)			
EA.8.	046 E 6007	1						Gasket - Camshaft Housing to Cylinder Block			
EA.9.	046 E 6013	1						10' Ring, 8.9 x 12.7 x 1.9 mm.			
EA.10.	046 E 6015	1						Joint			
EA.11.	046 E 6016	2						Stud) Fully interchangeable			
	A046 E 6494	2						Stud)			
EA.12.	A046 E 6491	1						Gasket			
EA.13.	046 E 6017	1						Washer) Fully interchangeable)	Fuel Pump		
	A046 E 6082	1					Washer)	Mounting			
	A046 W 6081	1						Bolt)			

PLATE Ref: No.	PART No.	QUANTITY					STEERING		DESCRIPTION	CHANGE POINT	BULLETIN REFERENCE
		ALL	S1.	S1. Mk 1	S2.	S2. Fed.	RH	LH			
EA.14.	046 E 6018	1							Plug		
EA.15.	046 E 6019	1							Seal		
EA.16.	A046 E 6504		4						Shim - 0.07 (697-04))	Optional	Up to Eng. No. 0565
	046 E 6201		4						Shim - 0.10 (697-04))		Up to Eng. No. 0565
	A054 E 6095			4	4	4			Shim - 0.08 (697-04))		From Eng. No. 0566
									(821-30))		to 1760
									(821-30))		From Eng. No. 0001
									(821-30))		to 0377
	A054 E 6096			4	4	4			Shim - 0.10 (697-04))	Optional	From Eng. No. 0566
									(821-30))		to 1760
									(821-30))		From Eng. No. 0001
									(821-30))		to 0377
	A054 E 6097			4	4	4			Shim - 0.12 (697-04))		From Eng. No. 0566
									(821-30))		to 1760
									(821-30))		From Eng. No. 001
									(821-30))		to 0377
	A054 E 6095				4	4			Shim - 0.08 (697-04))		From Eng. No. 1761
									(821-30))		From Eng. No. 0378
	A054 E 6096				4	4			Shim - 0.10 (697-04))	Optional	From Eng. No. 1761
									(821-30))		From Eng. No. 0378
	A054 E 6097				4	4			Shim - 0.12 (697-04))		From Eng. No. 1761
									(821-30))		From Eng. No. 0378
EA.17.	046 E 6020	2							Plug		
EA.18.	046 E 6021	1							Plug		
EA.19.	054 E 6098	1							Plug (697-04)		From Eng. No. 0566
									(821-30)		From Eng. No. 0001
EA.20.	046 E 6022	1							Seal		
EA.21.	046 E 6023	1							Screw Plug		
EA.22.	046 E 6024	3							Lock Plate		

PLATE Ref: No.	PART No.	QUANTITY					STEERING		DESCRIPTION	CHANGE POINT	BULLETIN REFERENCE
		ALL	SI.	SI. Mk 1	S2.	S2. Fed.	RH	LH			
EA.23.	046 E 6202	2							Joint, 5.1 mm.)		
	046 E 6203	2							Joint, 5.4 mm.)	Optional	
EA.24.	046 E 6025	2							Bush		
EA.25.	046 E 6026	2							Washer		
EA.26.	A046 W 6009	3							Washer		
	A046 W 6008	2							Bolt, 10 x 50 mm.		
	A046 W 6007	3							Nut		
EA.27.	046 E 6042		1	1					Cover Plate (697-04)		
	046 E 6043	1							Cover Plate		
EA.28.	046 E 6041	1							Gasket		
	A046 W 6004	4							Bolt, 8 x 20)	Coverplate to Cylinder Block	
	A046 W 6018	4							Washer)		
EA.29.	046 E 6040	1							Plug		
EA.30.	046 / 6038	4							Screw Plug		
EA.31.	046 E 6037	4							Seal Ring		
EA.34.	046 E 6018	1							Screw Plug		
EA.35.	046 E 6034	1							Seal Ring		
EA.36.	046 / 6033								Bolt - Main Bearing Cap 10 x 67		
EA.37.	046 E 6032								Plug		
EA.38.	046 E 6031								Blanking Plug (697-04)		Up to Eng. No. 0052
EA.39.	A054 E 6099					1			Threaded Tube (821-30)		
	A046 W 6005		1	1	1				Bolt		
	A046 W 6006					1			Bolt		
	A046 W 6010	1							Washer		
	046 E 6000		1	1	1				Overhaul Gasket Set (697-04)		
	054 E 6004					1			Overhaul Gasket Set (821-30)		Up to Eng. No. 0897
	A054 E 6004					1			Overhaul Gasket Set (821-30)		From Eng. No. 0898

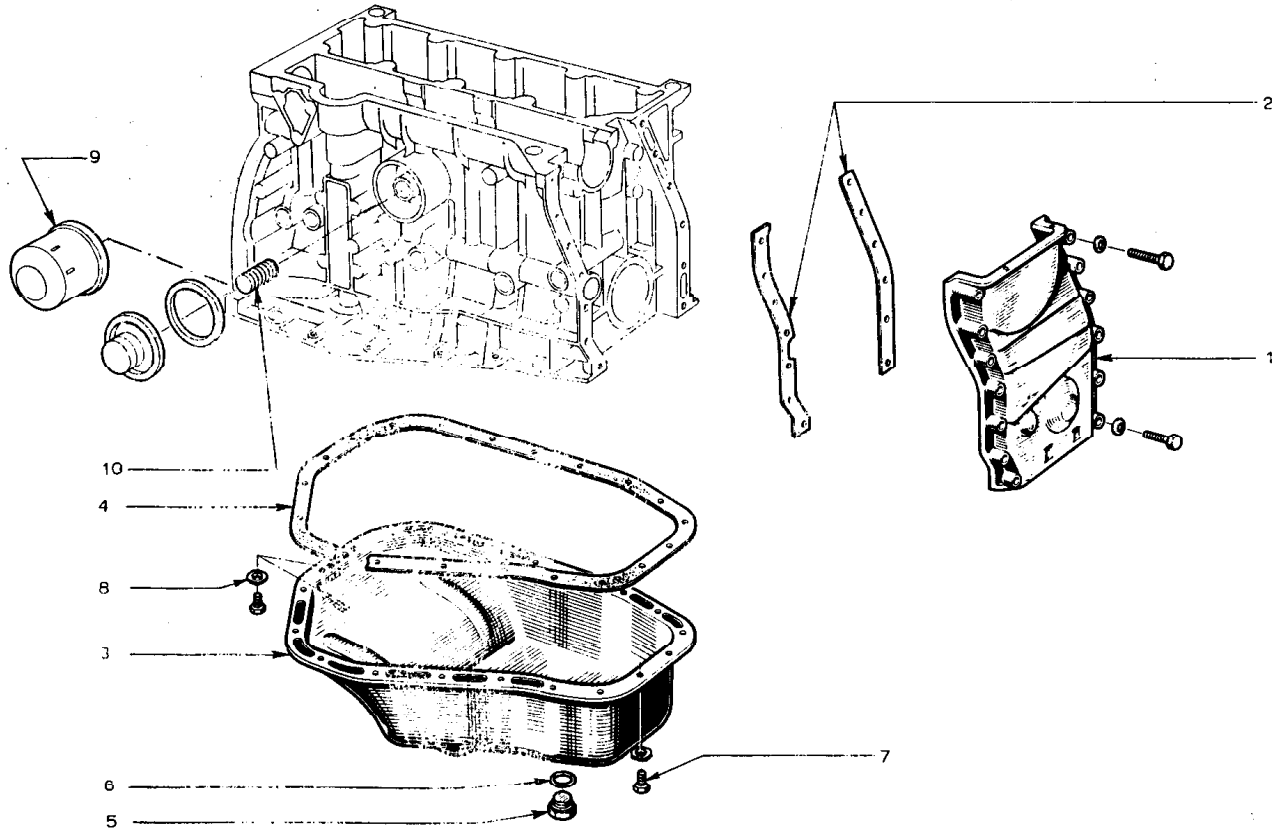


PLATE Ref. No.	PART No.	QUANTITY					STEERING		DESCRIPTION	CHANGE POINT	BULLETIN REFERENCE
		ALL	ST.	ST. Mk 1	S2.	S2. Fed.	RH	LH			
EB.1.	046 E 6056	1	1	1				Timing Cover (R9210)			
	A054 E 6052					1		Timing Cover (R9211)			
	A054 E 6053	10	10	10				Bolt - Timing Cover to Cylinder Block			
	A054 E 6054					13		Bolt - Timing Cover to Cylinder Block			
	A054 E 6055	3	3	3				Bolt - Timing Cover to Cylinder Block			
	A046 W 6047	13						Washer - Timing Cover to Cylinder Block			
EB.2.	046 E 6055	1						Gasket - Timing Cover (pair)			
	A046 E 6055	1						Gasket - Timing Cover (pair)			
EB.3.	046 E 6049	1						Oil sump			
EB.4.	046 E 6047	1						Gasket - oil sump			
EB.5.	A046 E 6051	1						Drain Plug - Oil sump			
EB.6.	046 E 6050	1						Sealing Ring - Oil sump Drain Plug			
EB.7.	A046 W 6000	20						Bolt - Oil sump to Cylinder Block			
EB.8.	046 E 6048	20						Lock washer - Oil sump to Cylinder Block			
EB.9.	046 E 6052	1						Oil filter element)			
	046 E 6053	1						Oil filter element) Optional			
	046 E 6054	1						Oil filter element)			
EB.10.	A046 E 6046	1						Adaptor			

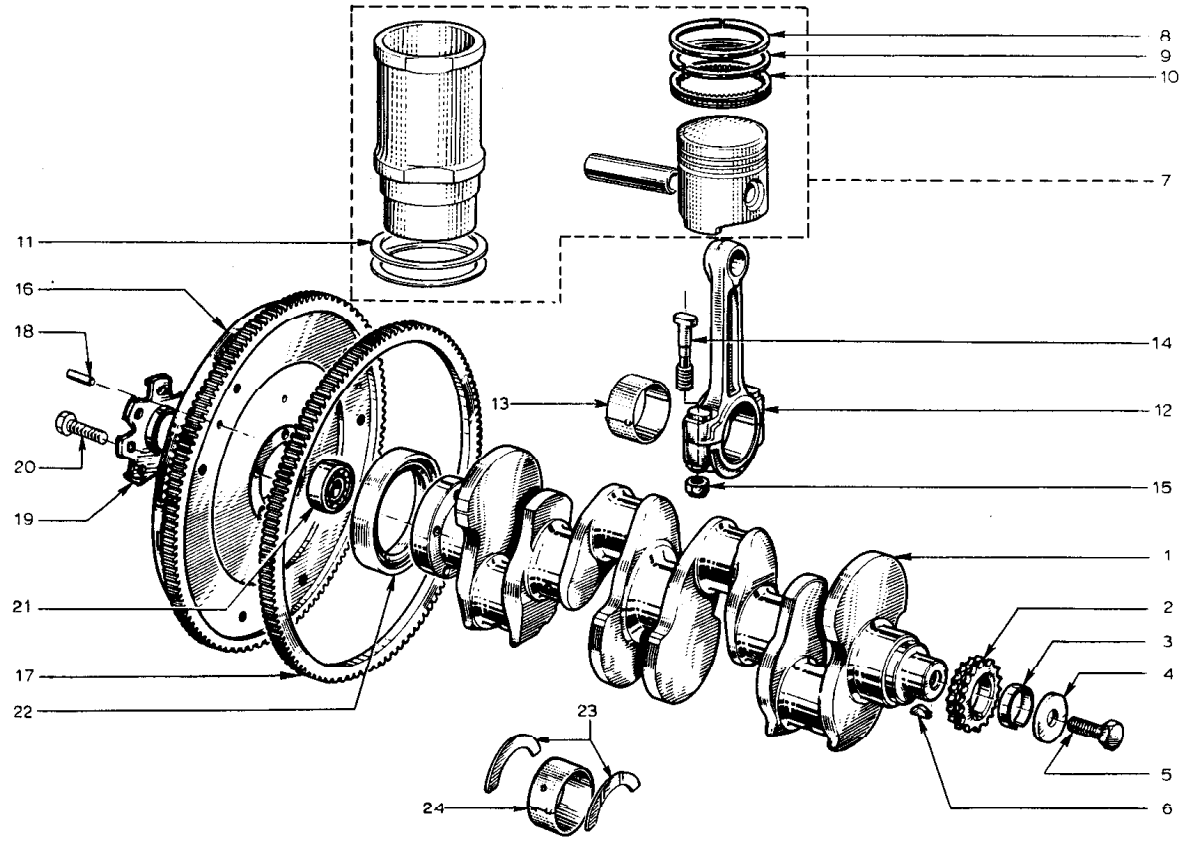


PLATE Ref: No.	PART No.	QUANTITY					STEERING		DESCRIPTION	CHANGE POINT	BULLETIN REFERENCE
		ALL	ST.	ST. Mk 1	S2.	S2. Fed.	RH	LH			
EC.1.	046 E 6388	1							Crankshaft (697-04)	Up to Engine No. 0066 From Engine No. 0067	
	046 E 6389	1						Crankshaft (697-04)			
	A054 E 6015				1			Crankshaft (821-30)			
EC.2.	046 E 6072	1						Sprocket)	Up to Engine No. 2556 (697-04) 1254 (821-30)		
EC.3.	046 E 6073	1						Spacer - Sprocket wheel)			
EC.4.	046 E 6074	1						Washer)			
EC.5.	A046 E 6012	1						Bolt) Sprocket wheel to Crankshaft			
								Sprocket)			
EC.6.	046 E 6075	1						Woodruff Key - Sprocket wheel to Crankshaft)	From Engine No. 2556 (697-04) 1255 (821-30)		
EC.7.	A054 E 6102	1	1					Piston/Liner Assembly (697-04) Engine set only	Up to Engine. No. 0565		
	A054 E 6103			1				Piston/Liner Assembly (697-04) Engine set only	From Engine No. 0566		
	A054 E 6104				1			Piston/Liner Assembly (821-30) Engine set only	Up to Engine No. 0866		
	A054 E 6105				1			Piston/Liner Assembly (821-30) Engine set only	From Engine No. 0867		
ED.8.	046 E 6065	4						Piston Ring - Top (697-04)	Up to Engine No. 0198		
	A054 E 6063		4	4	4			Piston Ring - Top (697-04)	From Engine No. 0199 to 1375		
	054 E 6016				4			Piston Ring - Top (821-30)			
EC.9.	046 E 6066	4	4	4				Piston Ring - Centre (697-04)			
	054 E 6017				4			Piston Ring - Centre (821-30)			
EC.10.	046 E 6067	4	4	4				Piston Ring - Bottom (697-04)			
	054 E 6018				4			Piston Ring - Bottom (821-30)			
EC.11.	046 E 6200	4						Shim - 0.07 mm.			
	046 E 6201	4						Shim - 0.10 mm.			

PLATE Ref: No.	PART No.	QUANTITY					STEERING		DESCRIPTION	CHANGE POINT	BULLETIN REFERENCE
		ALL	S1.	S1. Mk 1	S2.	S2. Fed.	RH	LH			
EC.12.	046 E 6387		4	4	4				Connecting Rod (697-04) 433 grams Blue	Up to Engine No. 1641	
	A054 E 6064				4				Connecting Rod (697-04) 433 grams	From Engine No. 1642	
	A054 E 6064					4			Connecting Rod (821-30) Blue	From Engine No. 0001	
	A054 E 6065				4				Connecting Rod (697-04) 455 grams	From Engine No. 1642	
	A054 E 6065					4			Connecting Rod (821-30) White	From Engine No. 0001	
EC.13.	046 E 6002	1							Bearing Shell - Connecting Rod (48 mm.) Standard		
	046 E 6002A	1							Bearing Small - Connecting Rod (47.75 mm.) Repair size		
EC.14.	046 E 6068	2							Bolt - Connecting Rod		
EC.15.	046 E 6070	8							Nut - Connecting Rod		
EC.16.	046 E 6383	1							Flywheel	Up to Engine No. 0066	
	046 E 6384	1							Flywheel	From Engine No. 0067 to 0501	
	046 E 6385	1							Flywheel	From Engine No. 0502	
EC.17.	046 E 6063	1							Ring Gear - flywheel		
EC.18.	046 E 6059	3							Dowel Pin		
EC.19.	A046 E 6061	1							Lock Plate	Up to Engine No. 0066	
	046 E 6061	1							Lock Plate	From Engine No. 0067	
EC.20.	046 E 6060	5							Bolt - flywheel to crankshaft	Up to Engine No. 0066	
	046 E 6060	7							Bolt - flywheel to crankshaft	From Engine No. 0067	
EC.21.	046 E 6386	1							Bearing - Clutch spigot shaft		
EC.22.	046 E 6064	1							Seal - crankshaft (697-04) only, use up old stock		
	A046 E 6471	1							Seal - crankshaft		

PLATE Ref: No.	PART No.	QUANTITY					STEERING		DESCRIPTION	CHANGE POINT	BULLETIN REFERENCE
		ALL	S1.	S1. Mk 1	S2.	S2. Fed.	RH	LH			
EC. 23	046 E 6004	1							Thrust Washer - 2.80 m.m.)		
	046 E 6005	1							Thrust Washer - 2.90 m.m.) Optional		
	046 E 6006	1							Thrust Washer - 2.95 m.m.)		
EC. 24	046 E 6003	1							Main Bearing Set - 54.80 m.m. (Standard)		
	046 E 6382	1							Main Bearing Set - 54.55 m.m. (Repair)		

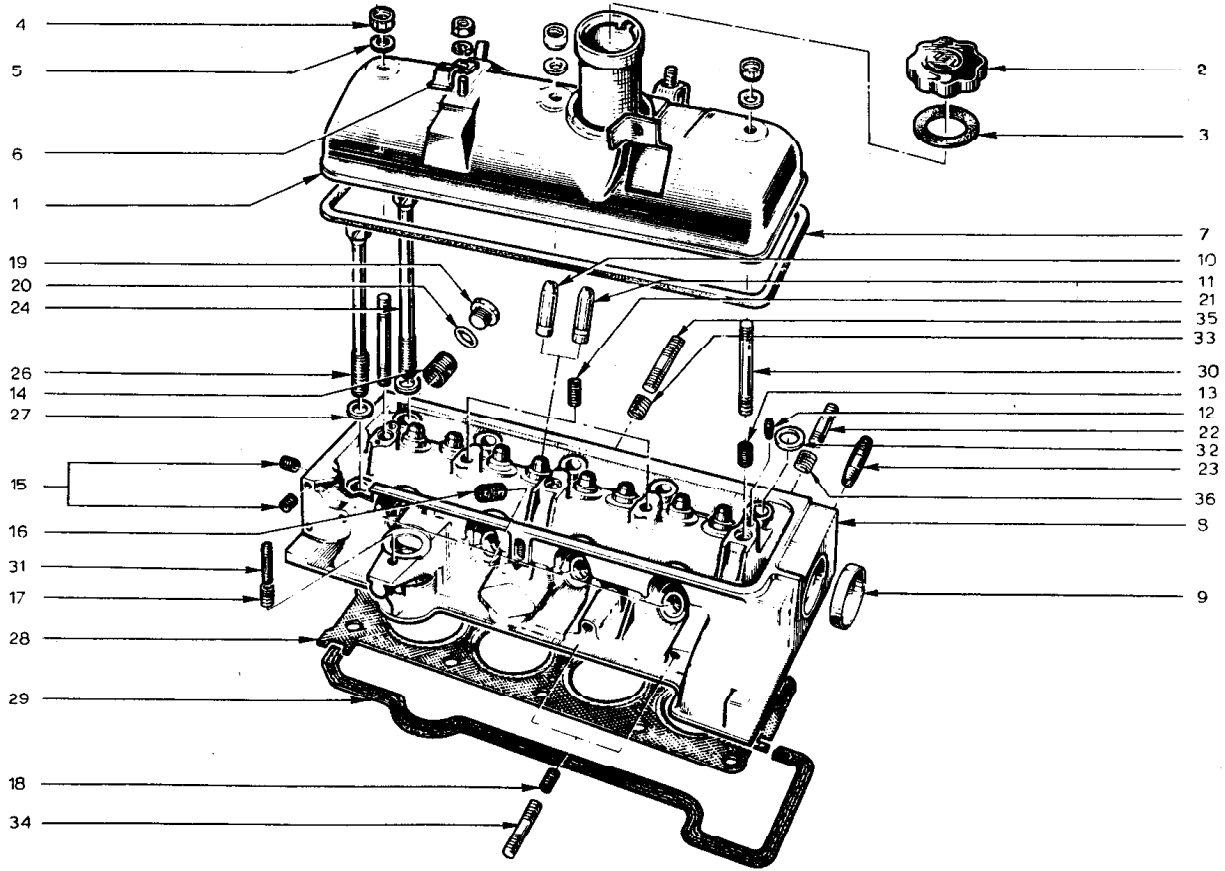


PLATE Ref: No.	PART No.	QUANTITY					STEERING		DESCRIPTION	CHANGE POINT	BULLETIN REFERENCE
		ALL	S1.	S1. Mk 1	S2.	S2. Fed.	RH	LH			
	046 E 6079	1							Rocker Cover)		
ED.1.	046 E 6390	1							Rocker Cover) Fully interchangeable		
ED.2.	046 E 6090	1							Oil Filler Cap		
	046 E 6091	1							Seal Ring - Oil Filler Cap)		
ED.3.	046 E 6393	1							Seal Ring - Oil Filler Cap) Fully interchangeable		
ED.4.	046 E 6076	3							Nut - Rocker Cover		
ED.5.	046 E 6077		3	3	3	6			Washer - Rocker Cover		
ED.6.	046 E 6078	1							Mounting Bracket		
ED.7.	046 E 6092	1							Gasket - Rocker Cover		
ED.8.	046 E 6101		1	1					Cylinder Head (697-04) replaced by A046 E 6101 Cylinder Head together with 2 off 054 E 6010 Nut	From Engine No. 0001 Up to Engine No.	
	A46 E 6101				1				Cylinder Head (697-04)	From Engine No. Up to Engine No.	
	A054 E 6019					1			Cylinder Head (821-30)	From Engine No. 0001 Up to Engine No. 0897	
	A054 E 6056					1			Cylinder Head (821-30)	From Engine No. 0898	
ED.9.	046 E 6102	1							Plug		
ED.10.	046 E 6093	8							Valve Guide - 13.40 mm.)	Optional	
ED.11.	046 E 6094	8							Valve Guide - 13.25 mm.)		
ED.12.	046 E 6098	2							Dowel Pin		
ED.13.	046 E 6097	4							Heli Coil Insert		
ED.14.	046 E 6083	1							Heli Coil Insert		
ED.15.	046 E 6085	40							Heli Coil Insert		
ED.16.	046 E 6086	4							Heli Coil Insert)	Optional	
	046 E 6392	4							Heli Coil Insert)		
ED.17.	046 E 6087	1							Heli Coil Insert		
ED.18. 12.70	046 E 6087	2							Heli Coil Insert		

PLATE Ref. No.	PART No.	QUANTITY					STEERING		DESCRIPTION	CHANGE POINT	BULLETIN REFERENCE
		ALL	SI.	SI. Mk I	S2.	S2. Fed.	RH	LH			
ED.19	046 E 6080		1	1	1				Plug (697-04 only)		
	A046 E 6080	1							Plug		
ED.20	046 E 6050	2							Seal Ring		
ED.21	046 E 6095	2							Heli-coil Insert		
ED.22	046 E 6099		4	4	4	6			Stud		
	046 E 6145		2	2	2				Bolt (697-04)	Upto	
ED.23	046 E 6100		1	1	1				Connector (697-04)	Upto Engine No. 1790	
	046 E 6100					1			Connector (821-30)	Upto Engine No. 0411	
	A046 E 6100		1	1	1				Connector (697-04)	From Engine No. 1791	
	A046 E 6100					1			Connector (821-30)	From Engine No. 0412	
ED.24	046 E 6391	5							Cylinder Head Bolt (697-04)	Upto Engine No. 0866	
	046 E 6391	4							Cylinder Head Bolt (697-04)	From Engine No. 0867	
	046 E 6391					4			Cylinder Head Bolt (821-30)		
ED.26	046 E 6081	5							Cylinder Head Bolt (697-04)	Upto Engine No. 0866	
	046 E 6081	6							Cylinder Head Bolt (697-04)	From Engine No. 0867	
	046 E 6081					6			Cylinder Head Bolt (821-30)		
ED.27	046 E 6084	10							Washer - Cylinder Head Bolt (697-04)	Upto Engine No. 0565	
	046 E 6084	8							Washer - Cylinder Head Bolt (697-04)	From Engine No. 0566	
	046 E 6084	9							Washer - Cylinder Head Bolt (697-04)	to 0866	
	046 E 6084					9			Washer - Cylinder Head Bolt (821-30)	From Engine No. 0867	
ED.28	046 E 6088		1	1	1				Cylinder Head Gasket (697-04)		
ED.28/29	054 E 6006					1			Cylinder Head Gasket (821-30)	Upto Engine No.	
	A054 E 6057					1			Cylinder Head Gasket (821-30)	From Engine No.	
ED.29	A046 E 6089	1							Joint Cylinder Head (697-04)	Upto Engine No. 0052	
	046 E 6089	1							Joint Cylinder Head (697-04)	From Engine No. 0053	
ED.30	046 E 6082	3							Stud - Cam Support Pillar		
ED.31	A046 W 6018	1							Stud - Distributor to Cylinder Head		

PLATE Ref. No.	PART No.	QUANTITY					STEERING		DESCRIPTION	CHANGE POINT	BULLETIN REFERENCE
		ALL	ST.	ST. Mk 1	S2.	S2. Fed.	RH	LH			
ED. 32.	046 E 6395			2	2				Washer (697 - 04)	From Engine No. 0566 to 0866	
	046 E 6395				1				Washer (697-04)		
	046 E 6395					1			Washer (821-30)	From Engine No. 0867	
ED. 33.	A046 E 6495		2	2	2				Helicoil (697-04)	From Engine No. 0566 to	
									(821-30)	From Engine No. 0001 to	
ED. 34.	A046 E 6496	1							Stud		
ED. 35.	A046 E 6497	2							Stud (697-04)	From Engine No. to	
									(821-30)	From Engine No. 0001 to	
ED. 36.	046 E 6097	2							Helicoil (697-04)	From Engine No. 0556 to	
									(821-30)	From Engine No. 0001 to	
	046 E 6380	1	1	1					De-carb. gasket set		
	054 E 6004					1			De-carb. gasket set	To Engine No.	
	A054 E 6004					1			De-carb. gasket set	From Engine No.	

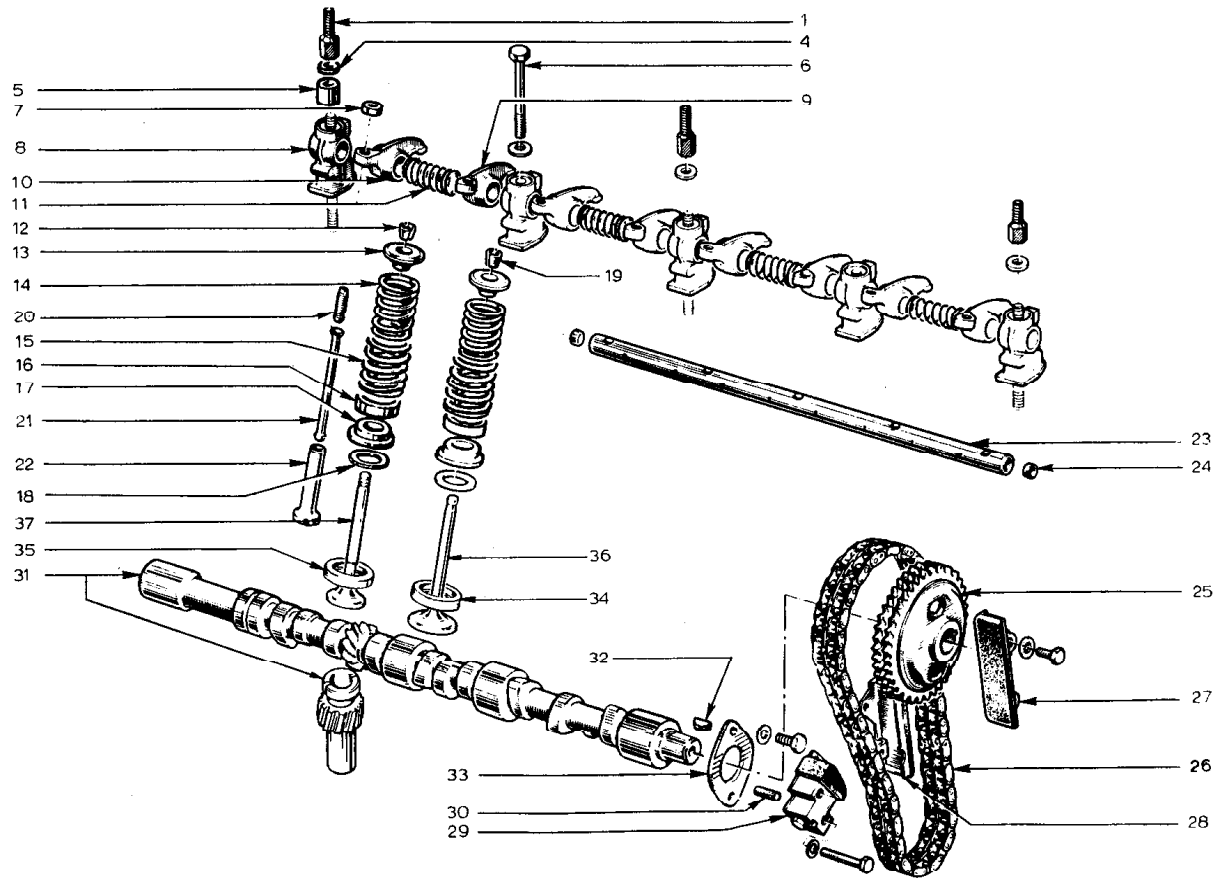


PLATE Ref: No.	PART No.	QUANTITY					STEERING		DESCRIPTION	CHANGE POINT	BULLETIN REFERENCE
		ALL	SI.	SI. Mk 1	S2.	S2. Fed.	RH	LH			
EE.1.	046 E 6124	3									
EE.4.	046 E 6125	5						Stud - Rocker cover retaining			
EE.5.	046 E 6103	2						Washer - Rocker support pillar			
EE.6.	046 E 6126	2						Bush			
EE.7.	046 E 6104	8						Bolt - Rocker support pillar			
EE.8.	046 E 6105	5						Lock nut - tappet			
EE.9.	046 E 6127	4						Pillar - rocker support			
EE.10.	046 E 6106	4						Rocker arm - inlet			
EE.11.	046 E 6107	4						Rocker arm - exhaust			
EE.12.	046 E 6108	8						Spring - rocker shaft			
EE.13.	046 E 6109	8						Collette - exhaust valve			
EE.14.	046 E 6110	8						Retainer - valve spring			
EE.15.	046 E 6112	8						Valve spring, inner			
EE.16.	046 E 6113	8						Valve spring, outer			
EE.17.	046 E 6114	8						Spacer - valve spring			
EE.18.	046 E 6118	8						Seat - valve spring			
EE.19.	046 E 6129	8						Washer - valve spring seat			
EE.20.	046 E 6111	8						Collette - inlet valve			
EE.21.	046 E 6115	8						Tappet adjusting screw			
EE.22.	046 E 6116	8						Push Rod			
	A046 E 6116	8						Tappet block 12.00 mm.	Up to Engine No. 1128		
	A046 E 6116	8						Tappet block 12.00 mm. (697-04)	From Engine No. 1129		
	046 E 6117	8						Tappet block 12.00 mm. (821-30)	From Engine No. 0001		
	046 E 6164	8						Tappet block 12.20 mm.	Up to Engine No. 1128		
	046 E 6164	8						Tappet block 12.20 mm. (697-04)	From Engine No. 1129		
	046 E 6164	8						Tappet block 12.20 mm. (821-30)	From Engine No. 0001		
EE.23.	046 E 6130	1						Rocker shaft			
EE.24.	046 E 6131	2						Plug - rocker shaft			
EE.25.	046 E 6134	1						Sprocket - camshaft			
EE.26.	046 E 6137	1						Timing chain			

PLATE Ref. No.	PART No.	QUANTITY					STEERING		DESCRIPTION	CHANGE POINT	BULLETIN REFERENCE
		ALL	SI.	SI. Mk I	S2.	S2. Fed.	RH	LH			
EE.27.	046 E 6136	2							Chain Guide	Up to Engine No. 0033	
	046 E 6135	4							Bolt)	Up to Engine No. 0033	
	A046 W 6014	4							Washer) Chain guide to cylinder block	Up to Engine No. 0033	
EE.28.	046 E 6396	2							Chain guide	Up to Engine No. 0033	
	046 E 6135	4							Bolt)	From Engine No. 0034	
	A046 W 6011	4							Washer) Chain guide to cylinder block	From Engine No. 0034	
EE.29.	046 E 6123	1							Timing chain tightener	From Engine No. 0034	
EE.30.	046 E 6122	1							Gauge		
	A046 W 6015	2							Bolt)		
	A046 W 6016	2							Washer) Tightener to cylinder block		
EE.31.	046 E 6371	1							Camshaft)		
	054 E 6003	1							Camshaft) Fully interchangeable		
EE.32.	046 E 6133	1							Woodruff key		
EE.33.	046 E 6121	1							Thrust Washer		
	A046 W 6017	2							Bolt)		
	A046 W 6014	2							Washer) Camshaft retaining		
EE.34.	046 E 6369	4							Valve Seat - inlet		
EE.35.	046 E 6370	4							Valve Seat - exhaust		
EE.36.	046 E 6132	4	4	4	4				Valve - inlet (697-04)		
	A054 E 6021					4			Valve - inlet (821-30)		
EE.37.	046 E 6119	4	4	4	4				Valve - exhaust (697-04)		
	A054 E 6020					4			Valve - exhaust (821-30)		

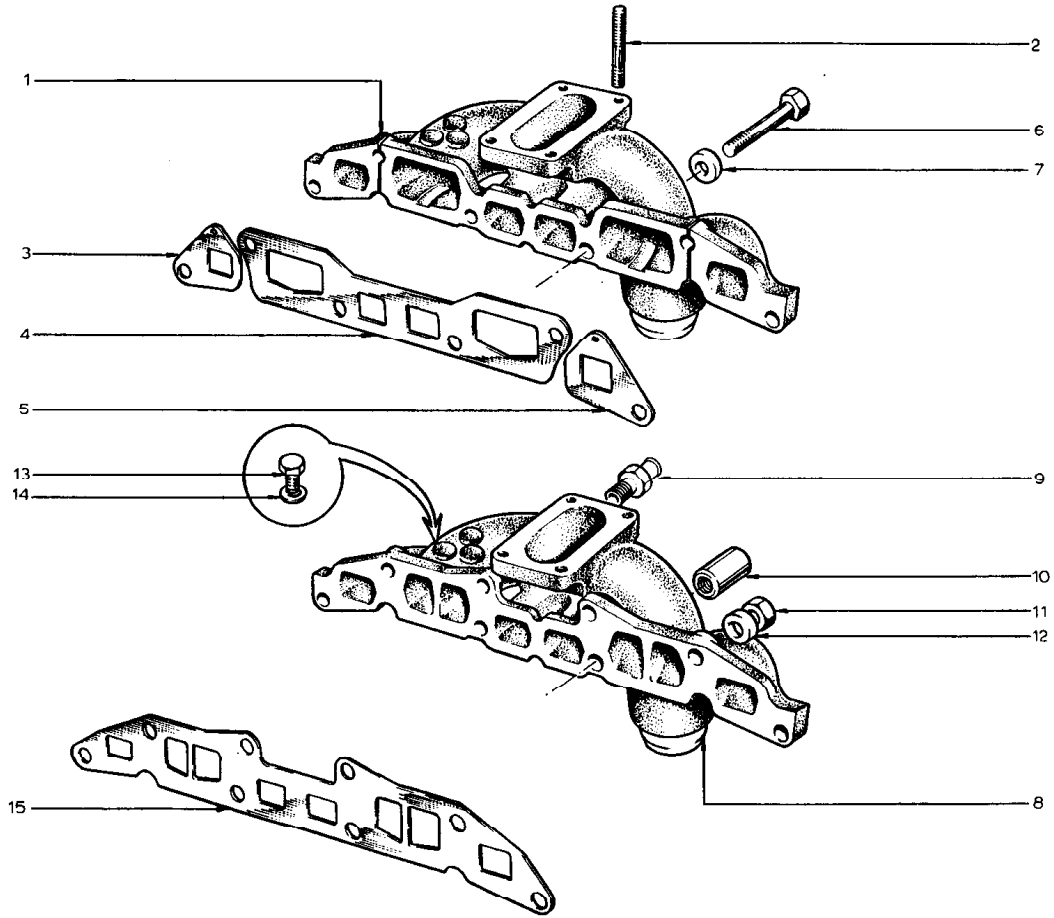


PLATE Ref. No.	PART No.	QUANTITY					STEERING		DESCRIPTION	CHANGE POINT	BULLETIN REFERENCE
		ALL	ST.	ST. Mk 1	S2.	S2. Fed.	RH	LH			
EF.1.	046 E 6139 046 E 6399		1	1					Manifold (697-04) Manifold (697-04) replaced by 054 E 6014 together with: 2 off A046 E 6497 Stud 2 off 054 E 6010 Nut after exhausting old stock.	Up to Engine No. 0501 From Engine No. 0502 to	
	054 E 6014				1				Manifold (697-04)	From Engine No.	
EF.2.	046 E 6312 A046 W 6022		4	4	4				Stud - Carburetter to Manifold (697-04) Stud - Carburetter to Manifold, 8 x 60 (821-30)		
EF.3.	046 E 6140		1	1	1				Gasket - front (697-04)		
EF.4.	046 E 6141		1	1	1				Gasket - centre (697-04)		
EF.5.	046 E 6148		1	1	1				Gasket - rear (697-04)		
EF.6.	046 E 6145		2	2	2				Bolt - (697-04))	Up to Engine No.	
EF.7.	046 E 6144 046 E 6144		6	6	6				Washer - (697-04)) Washer - (697-04))	Up to Engine No. From Engine No.	
					4				Manifold to Cylinder Head		
EF.8.	054 E 6013					1			Manifold - (821-30)		
EF.9.	046 E 6255	1							Connector - Vacuum Hose		
EF.10.	054 E 6010	2							Nut (697-04) (821-30)	From Engine No. From Engine No. 0001	
EF.11.	046 E 6146 046 E 146A	6							Nut (821-30) (697-04)	From Engine No. 0001 From Engine No.	
					4				Washer		
EF.12.	046 E 6144					4			Bolt - 8 x 14		
EF.13.	A046 W 6019	1							Washer		
EF.14.	046 E 6138	1							Gasket		
EF.15.	054 E 6005					1					

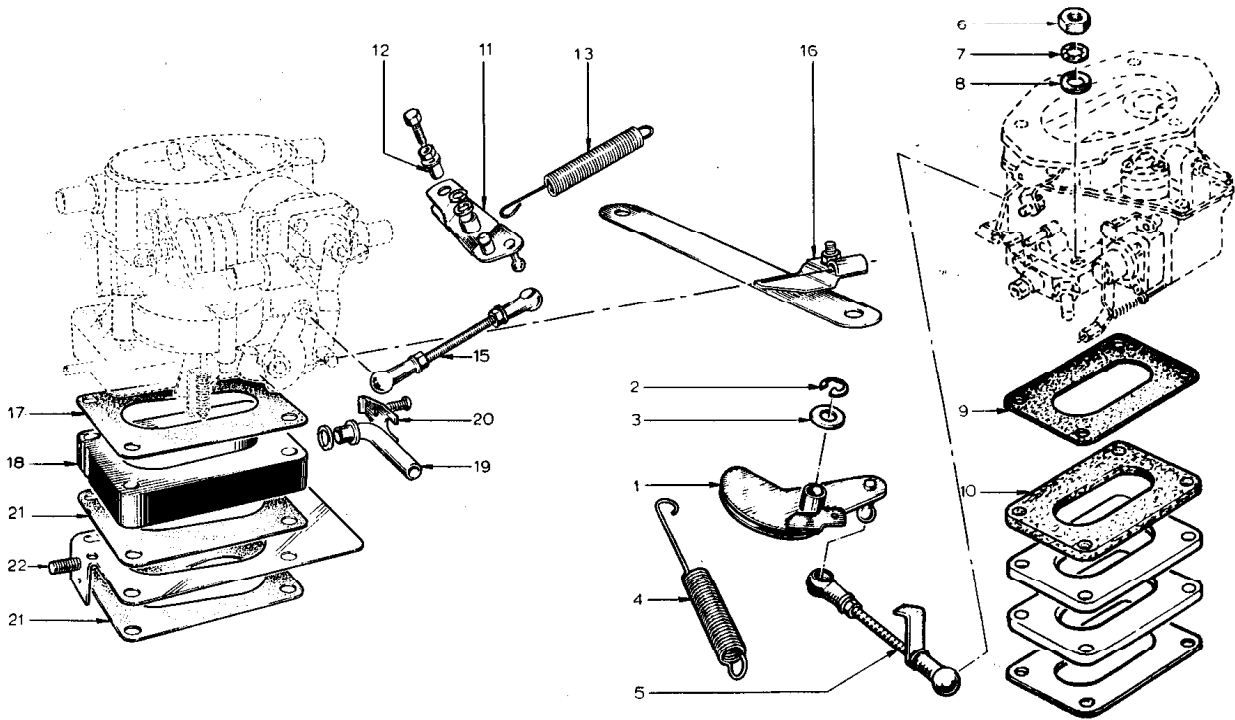


PLATE Ref. No.	PART No.	QUANTITY					STEERING		DESCRIPTION	CHANGE POINT	BULLETIN REFERENCE
		ALL	SI.	SI. Mk 1	S2.	S2. Fed.	RH	LH			
EG. 1.	046 E 6152	1							M.O.T. 697-04. R9210		
EG. 2.	046 E 6151	1							Relay Lever		
EG. 3.	A046 W 6002	1							Cirolip		
EG. 4.	046 E 6402	1							Washer - c. am.		
EG. 5.	046 E 6153	1							Return Spring		
EG. 6.	A046 W 6023	4							Operating Lever		
EG. 7.	A046 W 6001	4							Nut		
EG. 8.	046 E 6154	4							'Star' Washer		
EG. 9.	046 E 6155	3							Washer - plain, 8 mm.		
EG. 10.	046 E 6156	2							Joint		
									Insulator		
									M.O.T. 821-30. R9211		
EG. 11.	A054 E					1			Relay Lever		
EG. 12.	A054 E					1			Collar		
EG. 13.	A054 E					1			Return Spring		
EG. 15.	A054 E					1			Operating Lever		
EG. 16.	A054E					1			Support		
EG. 17.	A054 E					1			Joint		
E .19.	A054 E					1			Insulator		
EG. 19.	A054 E					1			Elbow		
EG. 20.	A054 E					1			Clip		
EG. 21.	A054 E					2			Joint		
EG. 22.	A054 E					1			Support Plate		

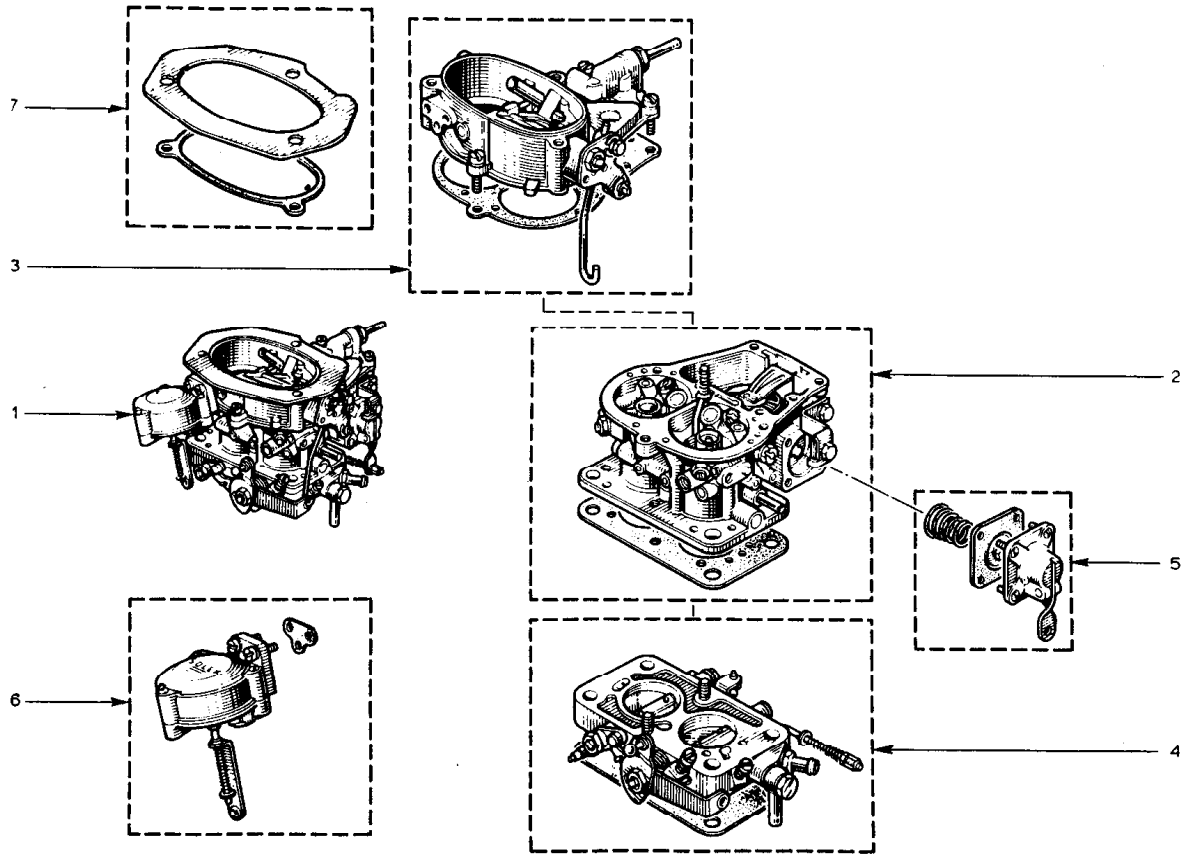


PLATE Ref. No.	PART No.	QUANTITY					STEERING		DESCRIPTION	CHANGE POINT	BULLETIN REFERENCE
		ALL	SI.	SI. Mk 1	S2.	S2. Fed.	RH	LH			
	046 E 6159	1							Carburettor - 383) fully) replaced by	Up to Engine No. 0044	
	046 E 6404	1							Carburettor - 383) interchange) 046 E.6462 able) after exhausting) old stocks	Up to Engine No. 0044	
EH.1.	046 E 6426	1							Carubetter - 402	From Engine No. 0045 to 0250 excluding 207, 219, 242, 245, 249	
	046 E 6427	1							Carburettor - 402/2 (replaced by 046 E 6430)	From Engine No. 0251 to 0391 including 207, 219, 242, 245, 249	
	046 E 6428	1							Carburettor - 402/3	From Engine No. 0392	
	046 E 6429	1							Carburettor - 415 without electric cutout	From Engine No. 0392 to	
	046 E 6430	1							Carburettor - 415 with electric cutout	From Engine No.	
	054 E 6011					1			Carburettor	From Engine No. 0001 to 0441	
	054 E 6012					1			Carburettor	From Engine No. 0442	
EH.2.	046 E 6762	1							Body - carburettor	Up to Engine No. 0250 excluding 207, 219, 242, 245, 249	
	A046 E 6472	1							Body - carburettor replaced by A046 E 6474 after exhausting old stock carburettor	From Engine No. 0251 to 0391	
	A046 E 6474	1							Body - carburettor	From Engine No. 0251 to 0391	
	A046 E 6473	1							Body - carburettor	From Engine No. 0392	

PLATE Ref. No.	PART No.	QUANTITY					STEERING		DESCRIPTION	CHANGE POINT	BULLETIN REFERENCE
		ALL	SI.	SI., Mk 1	S2.	S2. Fed.	RH	LH			
EH. 3	046 E 6158	1							Cover Assembly:- carburettor - without choke control lever	Upto Engine No. 0250 excluding 207, 219, 242, 245, 249	
	046 E 6161	1							Cover Assembly:- carburettor - with choke control lever	Upto Engine No. 0250 excluding 207, 219, 242, 245, 249	
	A046 E 6478	1							Cover Assembly:- carburettor - with choke control lever - replaced by A046 E 6477 after exhausting old stock	From Engine No. 0251 to 0391 including 207, 219, 242, 245, 249	
	A046 E 6477	1							Cover Assembly - carburettor - with choke control lever	From Engine No. 0251 to 0391 including 207, 219, 242, 245, 249	
	A046 E 6479	1							Cover Assembly - carburettor - with choke control lever	From Engine No. 0392	
EH. 4	046 E 6164	1							Throttle block - carburettor) fully	Upto Engine No. 0250 excluding 207, 219, 242, 245, 249	
	046 E 6405	1							Throttle block - carburettor) interchangeable - replaced by A046 E 6476 after exhausting old stock	Upto Engine No. 0250 excluding 207, 219, 242, 245, 249	
	A046 E 6476	1							Throttle block - carburettor	From Engine No. 0251 to 0391 including 207, 219, 242, 245, 249	
	A046 E 6475	1							Throttle block - carburettor	From Engine No. 0392	
EH. 5	046 E 6163	1						Pump - accelerator			
EH. 6	046 E 6160	1							Vacuum unit (697-04)		
	A054 E 6030	1							Vacuum unit (821-30)		
EH. 7	046 E 6457	1							Mounting plate		

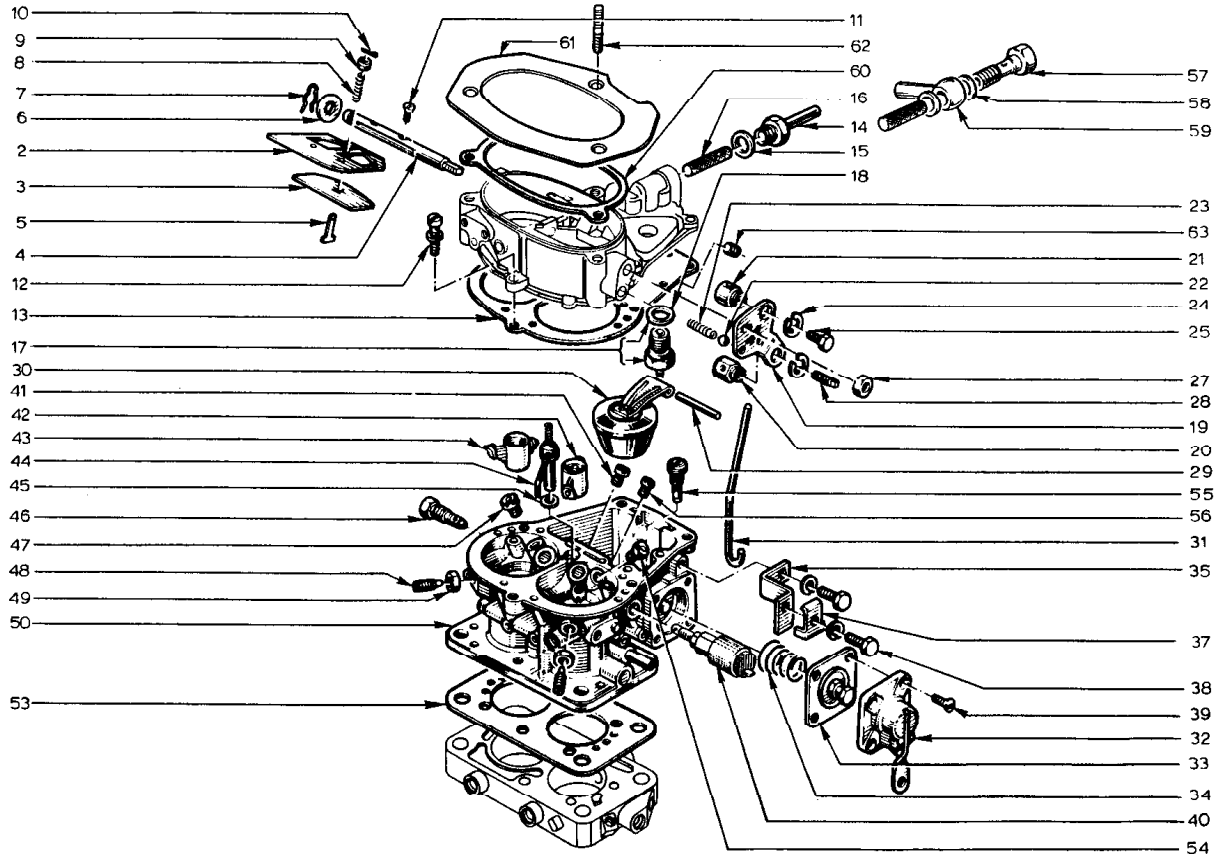


PLATE Ref: No.	PART No.	QUANTITY					STEERING		DESCRIPTION	CHANGE POINT	BULLETIN REFERENCE
		ALL	SI.	SI. Mk 1	S2.	S2. Fed.	RH	LH			
EJ. 2	046 E 6170	1							Flap - Choke		
EJ. 3	046 E 6171	1							Flap - Choke By-pass	Up to Engine No. 0250 excluding 207, 219, 242, 245, 249	
	A046 E 6480	1							Flap - Choke By-pass	From Engine No. 0251 including 207, 219, 242, 245, 249	
EJ. 4	046 E 6173	1							Shaft - Choke		
EJ. 5	046 E 6172	1							Shaft - Choke By-pass	Up to Engine No. 0250 excluding 207, 219, 242, 245, 249	
	A046 E 6481	1							Shaft - Choke By-pass	From Engine No. 0251 including 207, 219, 242, 245, 249	
EJ. 6	046 E 6169	1							Washer) Choke Shaft		
EJ. 7	046 E 6168	1							Retaining Clip)		
EJ. 8	046 E 6167	1							Spring)	Up to Engine No. 0250 excluding 207, 219, 242, 245, 249	
	046 E 6412	1							Spring)	From Engine No. 0251 including 207, 219, 242, 245, 249	
) Choke By-pass Flap		
EJ. 9	046 E 6166	1							Nut)	Up to Engine No. 0250 excluding 207, 219, 242, 245, 249	
	046 E 6411	1							Nut)	From Engine No. 0251 including 207, 219, 242, 245, 249	
EJ. 10	046 E 6165	1							Split Pin)		
EJ. 11	046 E 6189	2							Screw - Flap to shaft		
EJ. 12	046 E 6414	5							Screw - Cover to body		

PLATE Ref. No.	PART No.	QUANTITY					STEERING		DESCRIPTION	CHANGE POINT	BULLETIN REFERENCE
		ALL	S1.	ST. Mk 1	S2.	S2. Fed.	RH	LH			
EJ. 13	046 E 6175	1							Gasket - Cover	Up to Engine No. 0250 excluding 207, 219, 242, 245, 249	
	A046 E 6485	1							Gasket - Cover		
	A046 W 6027	5							Spring washer)) cover to main body		
	A046 E 6482	5							Washer)		
EJ. 14	046 E 6193		1	1	1				Connector - fuel inlet (697-04)	Up to Engine No. 0250 excluding 207, 219, 242, 245, 249	
EJ. 15	046 E 6194		1	1	1				Washer - fuel inlet (697-04)		
EJ. 16	046 E 6192		1						Gauze - fuel inlet		
EJ. 17	046 E 6176		1						Needle valve - 1.7 m.m.		
EJ. 18	046 E 6195		1						Washer - needle valve		
EJ. 19	046 E 6215		1						Lever - choke control		
	A046 E 6483		1						Lever - Choke control		
	046 E 6419		1						Lever - Choke control		
EJ. 20	046 E 6216		1						Mounting Bush - Choke cable		
EJ. 21	046 E 6198		1						Mounting Bush - Link to lever		
EJ. 22	046 E 6199		1						Ball - Choke control lever		
EJ. 23	046 E 6196		1						Pressure Spring - Choke lever ball		
EJ. 24	046 E 6211		2						Circlip		
EJ. 25	046 E 6212		1						Clamping Screw - Choke operating link		
EJ. 27	046 E 6213		1						Nut - Choke lever to shaft		
EJ. 28	046 E 6214		1						Clamping Screw - Choke cable to bush		
EJ. 29	046 E 6217		1						Shaft - (For float)		
EJ. 30	046 E 6177		1						Float - 7.3 gr.		

PLATE Ref: No.	PART No.	QUANTITY					STEERING		DESCRIPTION	CHANGE POINT	BULLETIN REFERENCE
		ALL	SI.	SI. Mk 1	S2.	S2. Fed.	RH	LH			
EJ. 31	046 E 6220	1							Link - Choke operating	Upto Engine No. 0391	
	046 E 6420	1							Link - Choke operating	From Engine No. 0392	
EJ. 32	046 E 6225	1							Cover - Accelerator pump		
EJ. 33	046 E 6226	1							Diaphragm - Accelerator pump		
EJ. 34	046 E 6227	1							Spring - Accelerator pump diaphragm		
EJ. 35	046 E 6221	1							Bracket - Choke cable	Upto Engine No. 0391	
	046 E 6421	1							Bracket - Choke cable	From Engine No. 0392	
EJ. 37	046 E 6223	1							Bracket - Choke cable		
EJ. 38	046 E 6222	2							Bolt) Choke cable mounting bracket		
	A046 W 6037	2							Washer)		
EJ. 39	046 E 6224	4							Screw - Accelerator pump cover		
EJ. 40	046 E 6416		1	1	1				Idle Jet - 50 with electric 'cutout' - (697-04)	From Engine No. 0392	
	A054 E 6037					1			Idle Jet - 60 with electric 'cutout' - (821-30)		
EJ. 41	046 E 6178		1	1	1				Jet - 140 (697-04)		
	A054 E 6036					1			Jet - 142,5 (821-30)		
EJ. 42	046 E 6406		1	1	1				Emulsion block - 2,8 (697-04)		
	054 E 6032					1			Emulsion block - 2,8 (821-30)		
EJ. 43	046 E 6407	1							Emulsion block - 3,2		
EJ. 44	046 E 6181	1							Injection tube - 40		
EJ. 45	046 E 6182	1							Gasket - Injection tube		
EJ. 46	046 E 6183		2	2	2				Idle Jet - 50 (697-04)	Upto Engine No. 0391	
	046 E 6183		1	1	1				Idle Jet - 50 (697-04)	From Engine No. 0392	
	A054 E 6034					1			Idle Jet - 95 (821-30)		
EJ. 47	046 E 6184		1	1	1				Jet - 150 (697-04)		
	A054 E 6033					1			Jet - 125 (821-30)		

PLATE Ref: No.	PART No.	QUANTITY					STEERING		DESCRIPTION	CHANGE POINT	BULLETIN REFERENCE
		ALL	SI.	SI. Mk 1	S2.	S2. Fed.	RH	LH			
EJ. 48	046 E 6185	2							Retaining Screw) Emulsion block		
EJ. 49	046 E 6186	2							Lock Nut)		
EJ. 50	046 E 6187		1	1	1				Body (697-04)		Upto Engine No. 0250 excluding 207, 219, 242, 245, 249
	A046 E 6484	1							Body		Upto Engine No. 0250 excluding 207, 219, 242, 245, 249
EJ. 53	046 E 6188	1							Gasket - Main body to throttle block		From Engine No. 0251 including 207, 219, 242, 245, 249
EJ. 54	046 E 6228		1	1	1				Jet - 135 (697-04)		
	A054 E 6033					1			Jet - 125 (821-30)		
EJ. 55	046 E 6218	1							Jet		
EJ. 56	046 E 6219		1	1	1				Jet - 145 (697-04)		
	A054 E 6035					1			Jet - 120 (821-30)		
EJ. 57	A054 E 6067					1			Banjo bolt (821-30)		
EJ. 58	046 E 6256					2			Washer (821-30)		
EJ. 59	A054 E 6068					1			Banjo (821-30)		
EJ. 60	046 E 6191	1							Gasket - mounting plate		From
EJ. 61	046 E 6417	1							Mounting plate		From Engine No. 0251 including 207, 219, 242, 245, 249
EJ. 62	A046 W 6013	3							Stud - Air filter to carburettor		From Engine No. 0251 including 207, 219, 242, 245, 249
EJ. 63	046 E 6418	1							Jet - Air correction - 270		From Engine No. 0251 including 207, 219, 242, 245, 249

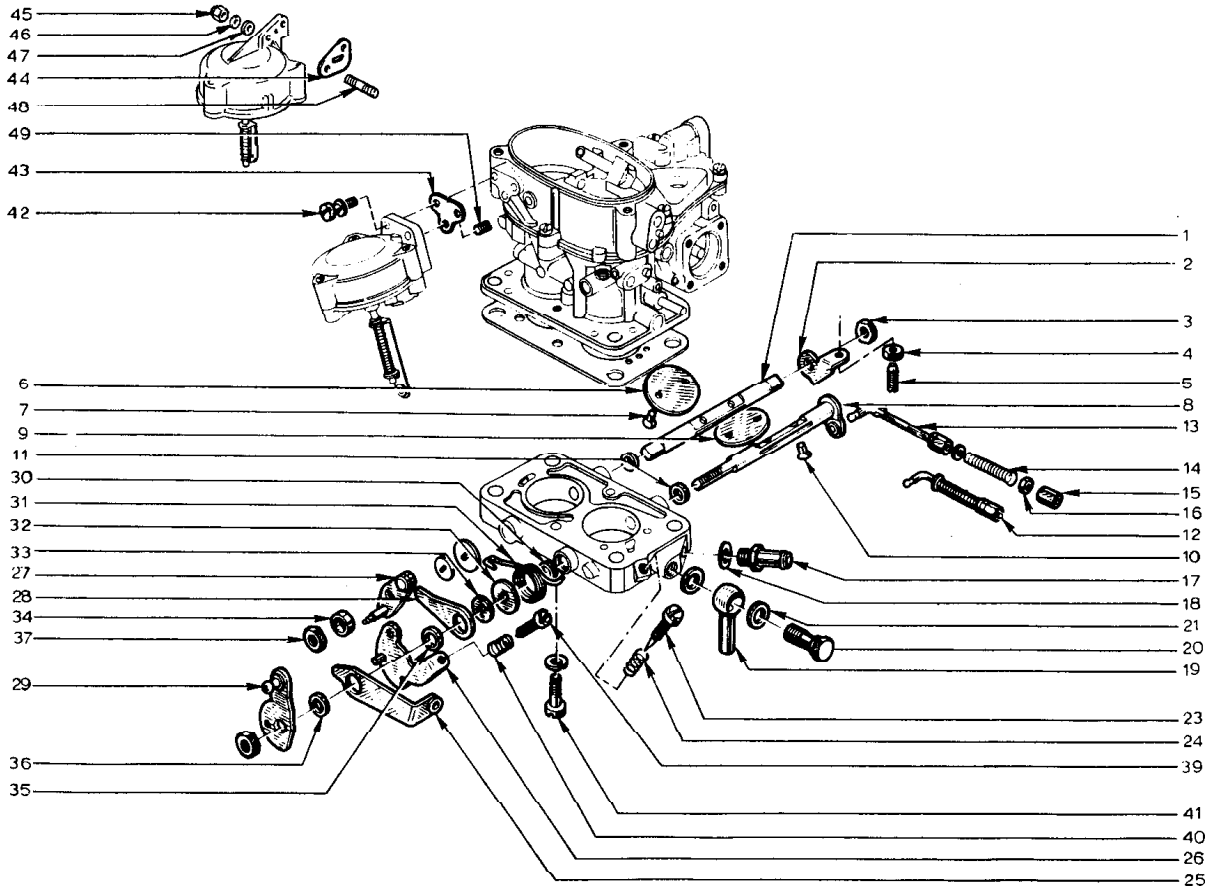


PLATE Ref. No.	PART No.	QUANTITY					STEERING		DESCRIPTION	CHANGE POINT	BULLETIN REFERENCE
		ALL	S1.	S1. Mk 1	S2.	S2. Fed.	RH	LH			
EK. 1	046 E 6245	1							Shaft - Throttle valve		
EK. 2	046 E 6246	1							Stop Lever		
EK. 3	046 E 6241	1							Nut - Throttle Shaft		
EK. 4	046 E 6247	1							Lock Nut)) Throttle Stop		
EK. 5	046 E 6248	1							Adjustment Screw)		
EK. 6	046 E 6232	1							Throttle Valve		
EK. 7	046 E 6233	2							Screw		
EK. 8	046 E 6249	1							Shaft with lever - throttle valve		
EK. 9	046 E 6232	1							Throttle valve		
EK. 10	046 E 6233	2							Screw	Upto Engine No. 0250 excluding 207, 219, 242, 245, 249	
	046 E 6410	2							Screw	From Engine No. 0251 including 207, 219, 242, 245, 249	
EK. 11	046 E 6234	2							Spacer bush		
EK. 12	046 E 6254	1							Link Assembly - Accelerator pump	Upto 0250 excluding 207, 219, 242, 245, 249	
	046 E 6409	1							Link Assembly - Accelerator pump	From 0251 including 207, 219, 242, 245, 249	
EK. 13	046 E 6250	1							Link - Accelerator pump	Upto Engine No. 0250 excluding 207, 219, 242, 245, 249	
	A046 E 6486	1							Link - Accelerator pump	From Engine No. 0251 including 207, 219, 242, 245, 249	
EK. 14	046 E 6251	1							Spring - Accelerator pump link		
EK. 15	046 E 6252	2							Nut - Accelerator pump link		

PLATE Ref: No.	PART No.	QUANTITY				STEERING		DESCRIPTION	CHANGE POINT	BULLETIN REFERENCE
		ALL	SI.	SI. Mk 1	S2.	S2. Fed.	RH			
EK.16.	046 E 6253	2						Nut - Accelerator Pump Link		
	A046 W 6028	1						Washer - Accelerator Pump Link		
EK.17.	046 E 6255	1						Connection		
EK.18.	046 E 6256	1						Washer		
EK.19.	046 E 6258	1						Connector - Banjo		
EK.20.	046 E 6257	1						Banjo Bolt		
EK.21.	046 E 6256	2						Washer		
EK.23.	046 E 6259		1	1	1			Idle Screw) Non-Emission	
EK.24.	046 E 6260		1	1	1			Spring - Idle Screw		
	A065 E 6003					1		Screw, Slow Running) Exhaust Emission	
	046 E 6260					1		Spring		
	A065 E 6004					1		Washer		
	A065 E 6005					1		10' Ring		
EK.25.	046 E 6264	1						Lever - Choke Operating Link	Upto Engine No. 0391	
	046 E 6408	1						Lever - Choke Operating Link	From Engine No. 0392	
EK.26.	046 E 6263	1						Stop Lever - Idle Adjustment		
EK.27.	046 E 6238	1						Stop Lever - Second Stage		
EK.28.	046 E 6239	1						Intermediate Lever		
EK.29.	046 E 6242	1						Lever - Throttle Control		
EK.30.	046 E 6234	1						Spacer Bush		
EK.31.	046 E 6235	1						Return Spring		
EK.32.	046 E 6236	2						Washer		
EK.33.	046 E 6237	2						Washer		
EK.34.	046 E 6240	1						Spacer Bush		
EK.35.	046 E 6244	1						Spacer Bush - 11 x 8 x 3 mm.		
EK.36.	046 E 6243	1						Spacer Bush - 10.9 x 18.1 x 2 mm.		

PLATE Ref: No.	PART No.	QUANTITY					STEERING		DESCRIPTION	CHANGE POINT	BULLETIN REFERENCE
		ALL	SI.	SI. Mk 1	S2.	S2. Fed.	RH	LH			
EK.37.	046 E 6241	2							Nut		
EK.39.	046 E 6261	1							Screw - Throttle Stop		
EK.40.	046 E 6260	1							Spring - Throttle Stop Screw		
EK.41.	046 E 6262	2							Screw)	Throttle Block to Carburetter Body	
	A046 W 6029	2							Washer)		
EK.42.	046 E 6174	2							Screw - Vacuum Control to Cover	Upto Engine No. 0250 excluding 207, 219, 242, 245, 249	
EK.43.	046 E 6231		1	1	1				Gasket - Vacuum Control to Cover (697-04)		
EK.44.	A054 E 6031					1			Gasket - Vacuum Control to Cover (821-30)		
EK.45.	A046 W 6109	2							Nut - Vacuum Control to Cover	From Engine No. 0251 including 207, 219, 242, 245, 249	
EK.46.	A046 W 6027	2							Spring Washer - Vacuum Control to Cover	From Engine No. 0251 including 207, 219, 242, 245, 249	
EK.47.	A046 W 6111	2							Washer - Vacuum Control to Cover	From Engine No. 0251 including 207, 219, 242, 245, 249	
EK.48.	A046 W 6110	2							Stud - Vacuum Control to Cover	From Engine No. 0251 including 207, 219, 242, 245, 249	
EK.49.	046 E 6197	1							Jet - 80	Upto Engine No. 0250 excluding 207, 219, 242, 245, 249	
	A046 E 6487	1							Jet - 70	From Engine No. 0251 including 207, 219, 242, 245, 249	

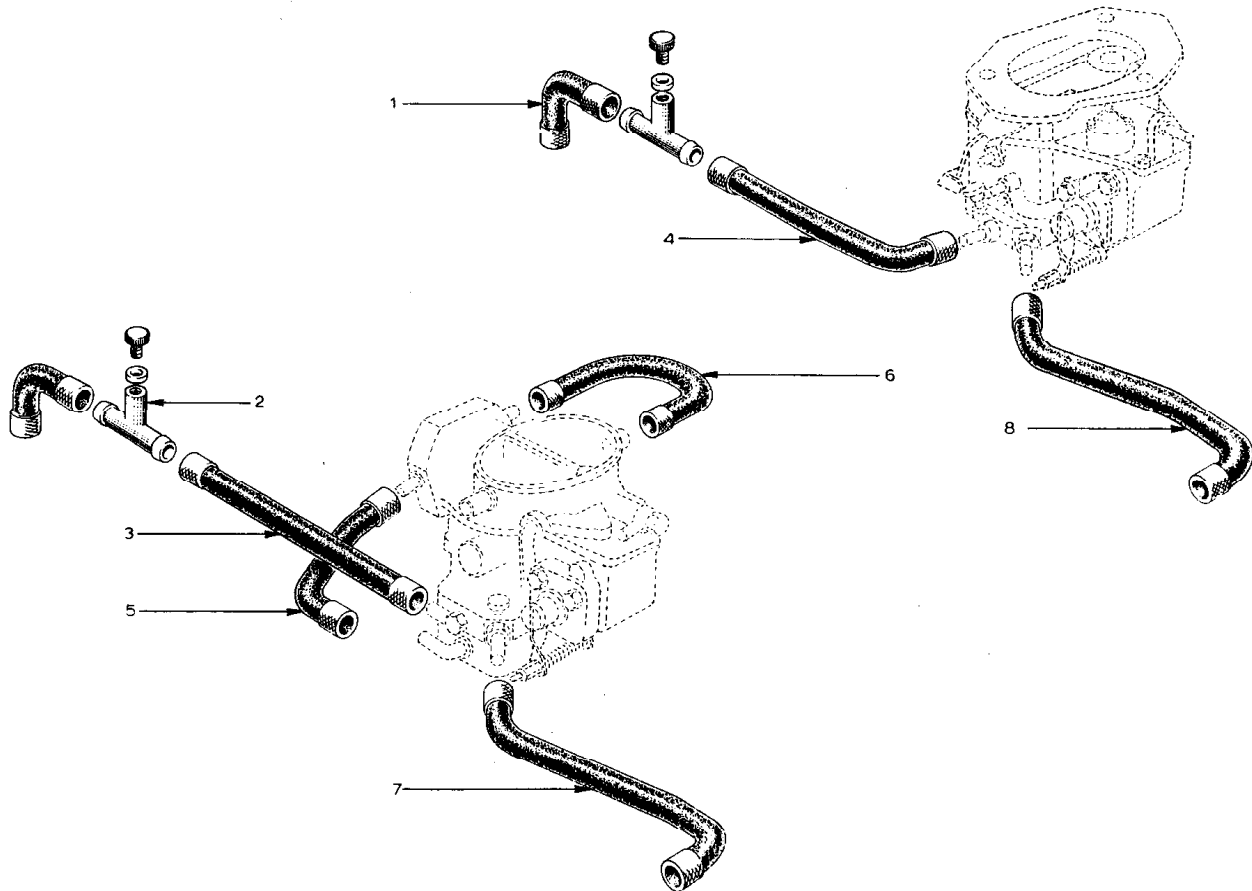


PLATE Ref: No.	PART No.	QUANTITY					STEERING		DESCRIPTION	CHANGE POINT	BULLETIN REFERENCE
		ALL	S1.	S1. Mk 1	S2.	S2. Fed.	RH	LH			
EL.1	A046 E 6270	1									
EL.2	046 E 6267	1						Hose			
	046 E 6268	1						Valve			
	046 E 6269	1						Screw Cap			
EL.3	A046 E 6272		1	1	1			Washer			
EL.4	054 E 6039						1	Hose (697-04)			
EL.5	054 E 6040						1	Hose (821-30)			
	A054 E 6100						1	Hose (821-30)		Upto Engine No. 0441	
EL.6	054 E 6038						1	Hose (821-30)		From Engine No. 0442	
	A054 E 6101						1	Hose (821-30)		Upto Engine No. 0441	
EL.7	A046 E 6274		1	1	1			Hose (821-30)		From Engine No. 0442	
EL.8	054 E 6041						1	Hose (697-04)			
	046 E 6271	4						Hose (821-30)			
	046 E 6273						4	Clip			
	046 E 6273		2	2	2			Clip (821-30)			
	A054 E 6091						2	Clip (697-04)			
								Clip (821-30)			

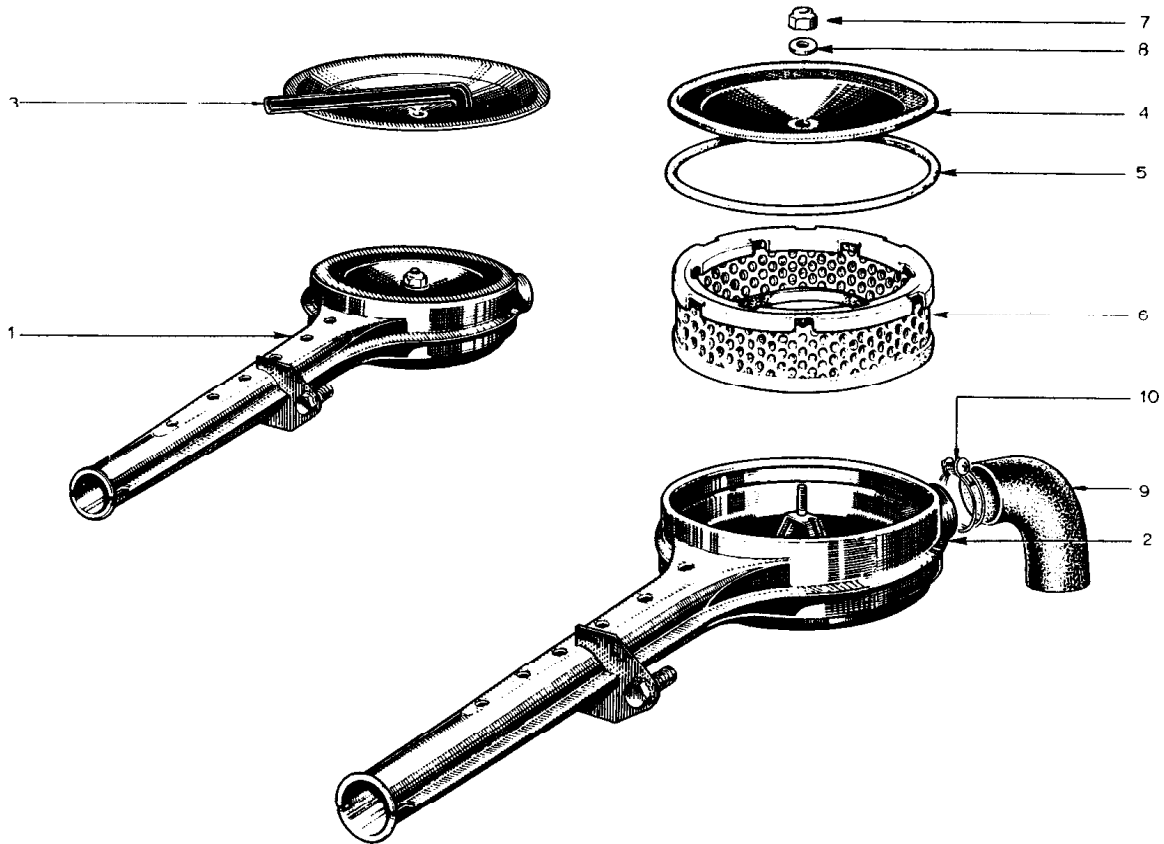


PLATE Ref: No.	PART No.	QUANTITY					STEERING		DESCRIPTION	CHANGE POINT	BULLETIN REFERENCE
		ALL	SI.	SI. Mk 1	S2.	S2. Fed.	RH	LH			
EM. 1	046 E 6275		1	1	1				Air Filter Assembly (697-04)		
	054 E 6009					1			Air Filter Assembly (821-30)		
EM. 2	046 E 6280	1							Air Filter Body		
EM. 3	046 E 6277		1	1	1				Cover - Air filter with seal ring (697-04)		
EM. 4	A046 E 6277					1			Cover - Air filter with seal ring (821-30)		
EM. 5	046 E 6278	1							Seal ring		
EM. 6	046 E 6279	1							Air filter element		
EM. 7	046 E 6452	1							Nut - Cover to body		
EM. 8	A046 E 6466	1							Washer - Cover to body		
EM. 9	046 E 6425	1							Hose - Rocker cover to air filter		
EM. 10	A046 E 6465	1							Clip		

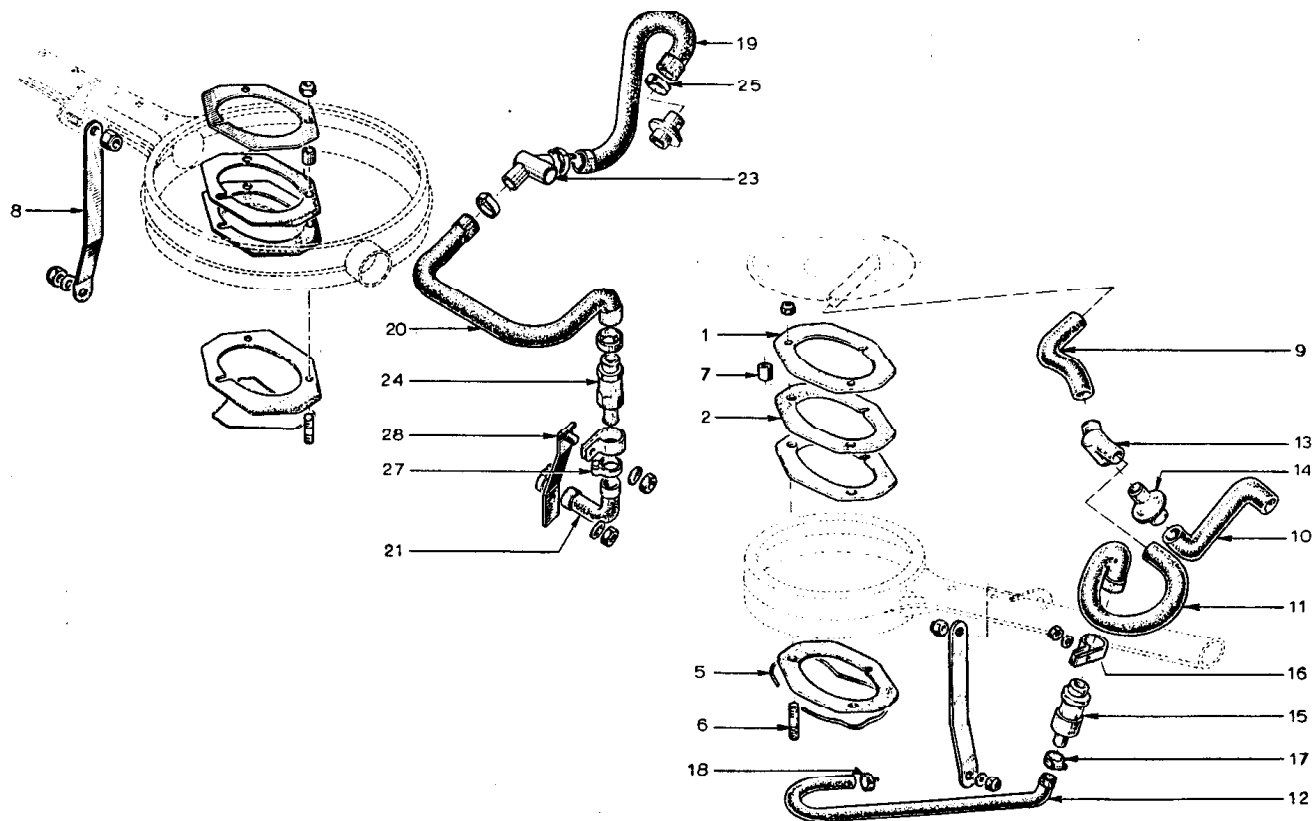


PLATE Ref. No.	PART No.	QUANTITY					STEERING		DESCRIPTION	CHANGE POINT	BULLETIN REFERENCE
		ALL	SI.	SI. Mk 1	S2.	S2. Fed.	RH	LH			
EN.1.	046 S 6001	1							Plate	Upto Eng. No. 0044	
	A046 E 6501	1							Plate	From Eng. No. 0045	
EN.2.	046 S 6000	4							Gasket	Upto Eng. No. 0044	
	046 S 6012	3							Gasket	From Eng. No. 0045	
EN.5.	046 E 6023	1							Clip		
EN.6.	A046 W 6013	3							Stud)		
	046 S 6025	3							Stud) Fully interchangeable		
	A046 W 6033	3							Nut - Air Filter to Carburettor		
EN.7.	A046 E 6500	4							Bush	Upto Eng. No. 0044	
	A046 E 6503	3							Bush	From Eng. No. 0045	
EN.8.	046 S 6022	1							Mounting Bracket		
	A046 W 6035	1							Nut)		
	A046 W 6034	1							Nut) Mounting Bracket Fixing		
	A046 W 6037	1							Washer)		
EN.9.	046 S 6002		1	1	1				Breather Hose (697-04)		
EN.10.	046 S 6015		1	1	1				Breather Hose (697-04)		
EN.11.	046 S 6007		1	1	1				Breather Hose (697-04)		
EN.12.	046 S 6017		1	1	1				Breather Hose (697-04)		
EN.13.	046 S 6014		1	1	1				Connector)		
	A046 E 6498		1	1	1				Connector) (697-04) Fully interchangeable		
EN.14.	046 S 6010	1							Capsule)		
	A046 E 6468	1							Capsule) (697-04) Fully interchangeable		
EN.15.	A046 S 6029		1	1	1				Valve - Non Return		
EN.16.	A046 S 6030	1							Clip - Valve Mounting		

PLATE Ref: No.	PART No.	QUANTITY					STEERING		DESCRIPTION	CHANGE POINT	BULLETIN REFERENCE
		ALL	ST.	ST. Mk 1	S2.	S2. Fed.	RH	LH			
	A046 W 6032		1	1	1				Nut)		
	A046 W 6031		1	1	1				Washer) (697-04)		
	A046 W 6034					1			Nut)		
	A046 W 6037					1			Washer) (821-30)		
EN.17.	046 E 6273		1	1	1				Hose Clip (697-04)		
EN.18.	A046 S 6031		1	1	1				Hose Clip (697-04)		
EN.19.	A054 E 6043					1			Breather Hose (821-30)		
EN.20.	A054 E 6044					1			Breather Hose (821-30)		
EN.21.	A054 E 6045					1			Breather Hose (821-30)		
EN.23.	A046 S 6032					1			Connector (821-30)		
EN.24.	A046 S 6033					1			Valve - Non Return (821-30)		
EN.25.	A046 S 6034					4			Hose Clip (821-30)		
EN.27	A046 S 6035					2			Hose Clip (821-30)		
EN.28.	A046 S 6036					1			Mounting Bracket - Non Return Valve (821-30)		
	A046 W 6032					1			Nut)		
	A046 W 6038					1			Washer) (821-30) Mounting Bracket Fixing		

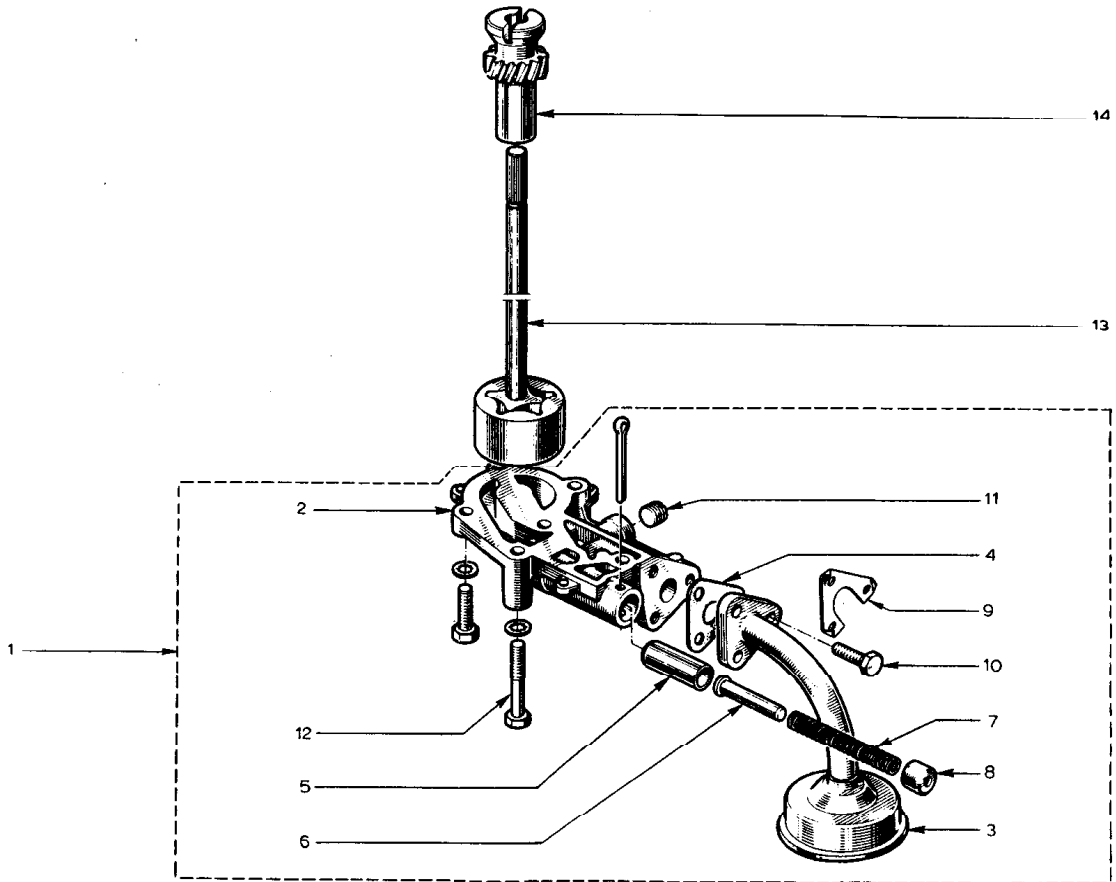


PLATE Ref: No.	PART No.	QUANTITY					STEERING		DESCRIPTION	CHANGE POINT	BULLETIN REFERENCE		
		ALL	ST.	ST. Mk 1	S2.	S2. Fed.	RH	LH					
EO. 1	046 E 6368	1									Oil pump body assembly		
EO. 2	046 E 6281	1									Body-oil pump		
EO. 3	046 E 6291	1									Filter		
EO. 4	046 E 6288	1									Joint - filter to body		
EO. 5	046 E 6283	1									Sleeve - oil pressure relief valve		
EO. 6	046 E 6284	1									Valve - oil pressure relief		
EO. 7	046 E 6289	1									Spring - oil pressure relief		
EO. 8	046 E 6291	1									Cap - oil pressure relief		
	A046 W 6040	1									Split pin - relief valve retaining		
EO. 9	046 E 6367	1									Lock Tab) Filter to pump body		
EO. 10	046 E 6374	3									Bolt)		
EO. 11	046 E 6287	1									Plug		
EO. 12	046 E 6282	2									Bolt - pump body to cylinder block		
	A046 W 6039	2									Bolt - pump body to cylinder block		
	A046 W 6037	4									Washer - pump body to cylinder block		
EO. 13	046 E 6286	1									Oil pump rotor and shaft		
EO. 14	046 E 6372	1									Drive gear		

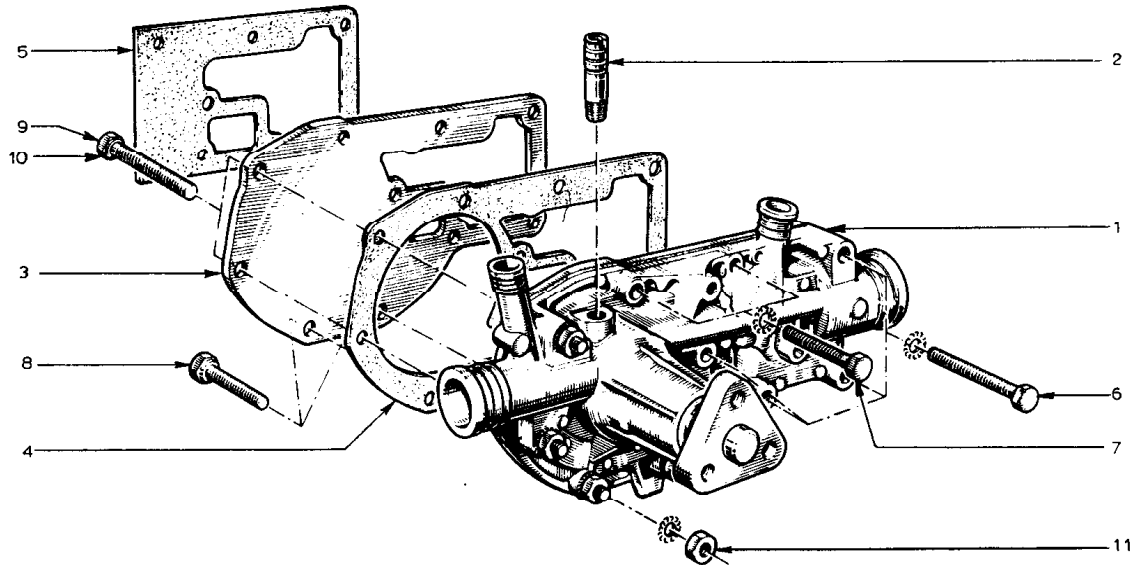


PLATE Ref: No.	PART No.	QUANTITY					STEERING		DESCRIPTION	CHANGE POINT	BULLETIN REFERENCE
		ALL	S1.	S1. Mk 1	S2.	S2. Fed.	RH	LH			
EP.1.	046 E 6297		1	1					Water Pump Assembly) Replaced by A054 E 6058 Water Pump Assembly) after exhausting old Water Pump Assembly) stocks		
	A046 E 6297		1	1	1						
EP.2.	046 E 6296	1						Water Pump Assembly	Connector - Hose to Throttle Block (697-04) (821-30)	Upto Engine No. 1790 Upto Engine No. 0411	
	A054 E 6069	1						Connector - Hose to Throttle Block (697-04) (821-30)			
EP.3.	046 E 6294	1						Intermediate Plate			
EP.4.	046 E 6295	1						Gasket - Pump to Intermediate Plate			
EP.5.	046 E 6292	1						Gasket - Intermediate Plate to Cylinder Block			
EP.6.	A046 W 6043	4						Bolt - 7 x 60			
	A046 W 6047	4						Washer			
EP.7.	A046 W 6044	3						Bolt - 7 x 40			
	A046 W 6047	3						Washer			
EP.8.	A046 W 6041	2						Bolt - 7 x 35	((697-04)	Upto Engine No. 1641	
									((821-30)	Upto Engine No. 0222	
	A046 W 6042	2						Bolt - 7 x 20	((697-04)	From Engine No. 1642	
									((821-30)	From Engine No. 0223	
EP.9.	046 E 6293	2						Washer	((697-04)	From Engine No. 1642	
									((821-30)	From Engine No. 0223	
EP.10.	046 E 6293	2						Bolt - 7 x 55	((697-04)	Upto Engine No. 1641	
									((821-30)	Upto Engine No. 0222	
EP.11.	A046 W 6042	2						Bolt - 7 x 20	((697-04)	From Engine No. 1642	
	A046 W 6047	2						washer	((821-30)	From Engine No. 0223	
EP.11.	A046 W 6046	4						Nut	((697-04)	Upto Engine No. 1641	
	A046 W 6045	4						Washer	((821-30)	Upto Engine No. 0222	

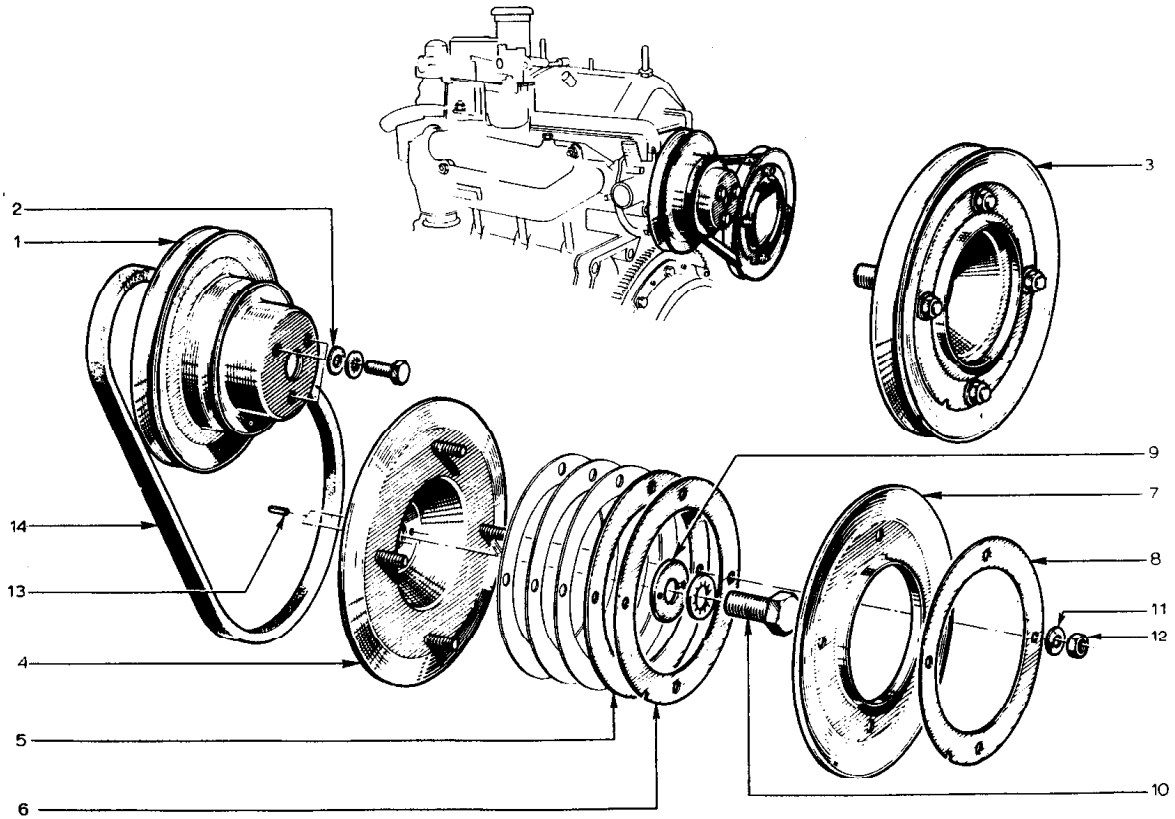


PLATE Ref: No.	PART No.	QUANTITY					STEERING		DESCRIPTION	CHANGE POINT	BULLETIN REFERENCE
		ALL	S1.	S1. Mk 1	S2.	S2. Fed.	RH	LH			
EQ. 1	046 E 6299	1							Water pump pulley - replaced by A046 E 6488 after exhausting old stocks first		
	A046 E 6488	1							Water pump pulley (697-04)	Upto Engine No.	
	A046 E 6489	1							Water pump pulley ((697-04) ((821-30)	From Engine No. From Engine No. 0001	
EQ. 2	046 E 6154	3							Washer)		
	A046 W 6001	3							'Star' Washer) Pulley to water pump		
	A046 W 6049	3							Bolt - 8 x 14 m.m.)		
EQ. 3	046 E 6305	1							Camshaft pulley (697-04) - replaced by A054 E 6070 together with 2 off A054 E 6071 Dowel Pin	Upto Engine No. 1066	
	A054 E 6070	1							Camshaft pulley - ((697-04) ((821-30)	From Engine No. 1067 From Engine No. 0001	
EQ. 4	046 E 6302	1							Hub - camshaft pulley (697-04) - replaced by A054 E 6072 together with 1 off A054 E 6073 after exhausting old stock	Upto Engine No. 1066	
	A054 E 6072	1							Hub - camshaft pulley ((697-04) ((821-30)	From Engine No. 1067 From Engine No. 0001	
EQ. 5	046 E 6303	4							Disc - camshaft pulley - 0.95		
EQ. 6	046 E 6304	2							Disc - camshaft pulley - 0.50		
EQ. 7	046 E 6307	1							Hub support replaced by A054 E 6074 after exhausting old stock		
	A054 E 6074	1							Hub support		
EQ. 8	046 E 6304	1							Support ring		
EQ. 9	046 E 6306	1							Locating washer (697-04) - replaced by A054 E 6074 together with 2 off A054 E 6072 Dowel pin after exhausting old stock	Upto Engine No. 1066	

PLATE Ref. No.	PART No.	QUANTITY					STEERING		DESCRIPTION	CHANGE POINT	BULLETIN REFERENCE
		ALL	S1.	S1. Mk 1	S2.	S2. Fed.	RH	LH			
	A054 E 6073	1							Locating washer (697-04) (821-30)	From Engine No. 1067 From Engine No. 0001	
EQ. 10	046 E 6311	1							Bolt) Washer) Pulley to camshaft		
	A046 W 6048	1									
EQ. 11	046 E 6309	4							'Dished' washer) Nut) Pulley retaining		
EQ. 12	046 E 6310	4									
EQ. 13	046 E 6301	2							Dowel pin (697-04) - replaced by A054 E 6071 together with 1 off A054 E 6072 Locating Washer	Upto Engine No. 1066	
	A054 E 6072	2							Dowel pin (697-04) (821-30)	From Engine No. 1067 From Engine No. 0001	
EQ. 14	046 E 6300	1							Drive belt - water pump		

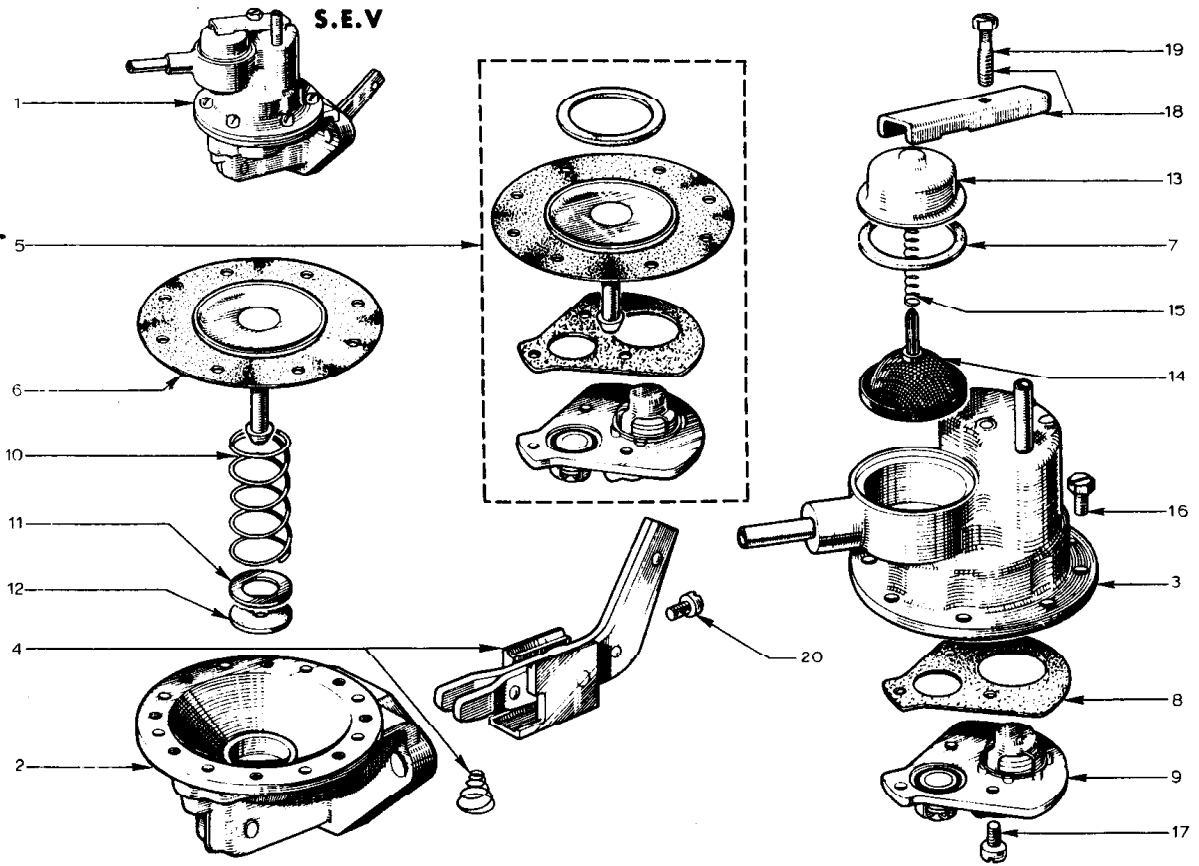


PLATE Ref: No.	PART No.	QUANTITY					STEERING		DESCRIPTION	CHANGE POINT	BULLETIN REFERENCE
		ALL	SI.	SI. Mk 1	S2:	S2. Fed.	RH	LH			
ER.1.	A054 E 6075	1							From Chassis No. 2520 1178		
	A065 E 6000	1						Fuel Pump (replaced by A065 E 6000) Fuel Pump			
ER.2.	046 E 6320	1	1	1				Housing - lower (697-04)			
	A054 E 6076					1		Housing - lower (821-30)			
ER.3.	046 E 6329	1	1	1				Housing - upper (697-04)			
	A054 E 6078					1		Housing - upper (821-30)			
ER.4.	046 E 6319	1	1	1				Lever Assembly - with spring (697-04)			
	A054 E 6080					1		Lever Assembly - with spring (821-30)			
ED.5.	046 E 6314	1	1	1				Repair Kit (697-04)			
	A054 E 6081					1		Repair Kit (821-30)			
ED.6.	046 E 6315	1	1	1				Diaphragm (697-04)			
	A054 E 6083					1		Diaphragm (821-30)			
ED.7.	046 E 6324	1						Gasket - filter bowl			
ER.8.	046 E 6331	1						Gasket - housing to valve assembly			
ER.9.	046 E 6332	1						Valve Assembly			
ER.10.	046 E 6316	1	1	1				Spring - diaphragm (697-04)			
	A054 E 6085					1		Spring - diaphragm (821-30)			
ER.11.	046 E 6317	1	1	1				Washer - diaphragm spring (697-04)			
	A054 E 6087					1		Washer - diaphragm spring (821-30)			
ER.12.	046 E 6318	1	1	1				Washer - diaphragm spring seat (697-04)			
	A054 E 6086					1		Washer - diaphragm spring seat (821-30)			
ED.13.	046 E 6324	1						Cover			
ER.14.	046 E 6327	1						Filter			
ER.15.	046 E 6326	1						Spring - fuel filter			
ER.16.	046 E 6328	8						Screw - upper housing to lower housing			
ER.17.	046 E 6328	2						Screw - valve assembly to upper housing			
ER.18.	046 E 6323	1						Clamp - filter cover			

PLATE Ref: No.	PART No.	QUANTITY					STEERING		DESCRIPTION	CHANGE POINT	BULLETIN REFERENCE
		ALL	SI.	SI. Mk 1	S2.	S2. Fed.	RH	LH			
ER.19.	046 E 6322	1							Screw - filter cover		
ER.20.	046 E 6330	1							Screw - lever to housing		

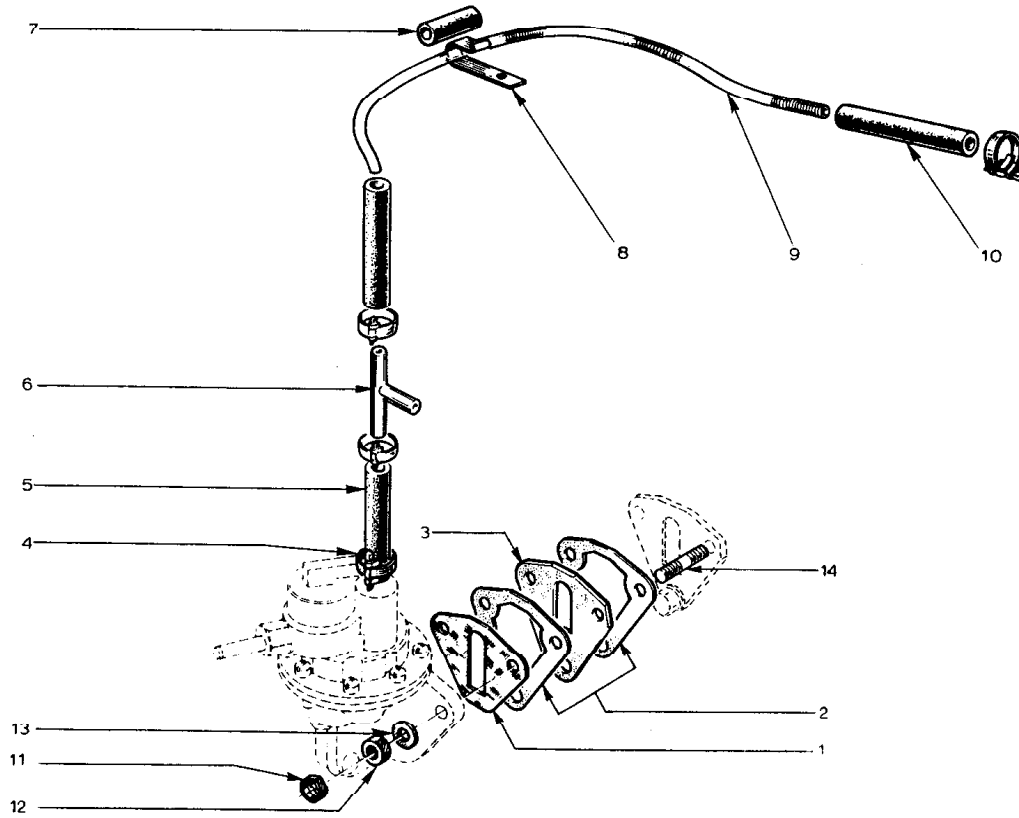


PLATE Ref. No.	PART No.	QUANTITY					STEERING		DESCRIPTION	CHANGE POINT	BULLETIN REFERENCE
		ALL	ST.	ST. Mk 1	S2.	S2. Fed.	RH	LH			
	046 E 6334	1	1	1				Gasket - Fuel Pump Mounting (replaced by A046 E 6490)			
ES.1.	A046 E 6490	1	1	1				Gasket - Fuel Pump Mounting			
ES.2.	A054 E 6050					2		Gasket - Fuel Pump Mounting (821-30)			
	A054 E 6050	1	1	1				Gasket - Fuel Pump Mounting (69704)			
ES.3.	046 E 6015	1						Gasket - Fuel Pump Mounting.			
ES.4.	046 E 6342	4						Clip - Fuel Line)			
ES.5.	046 E 6338	1						Hose - Pump Connection to Fuel Line)			
ES.6.	A046 E 6491	1	1	1				Three-way Connection (697-04) replaced by A046 E 6492 after exhausting old stock)	To Chassis No. 2519 and 1177		
	A046 E 6492	1						Three -Way Connection			
ES.7.	046 E 6340	1						Sleeve, 25 mm. long			
ES.8.	046 E 6337	1						Clip - Fuel Line Support			
ES.9.	046 E 6343		1	1	1			Fuel Line - Pump to Carburettor)	To Chassis No. 2519		
	A854 E 6090					1		Fuel Line - Pump to Carburettor)	and 1177		
	A065 E 6001				1	1		Fuel Line - Pump to Carburettor	From Chassis No. 2520 and 1178		
ES.10.	A046 E 6493	2						Hose - Fuel Line to 'T' Piece Fuel Line to Carburettor			
ES.11.	046 E 6344	2						Lock Nut)			
ES.12.	046 E 6339	2						Nut) Fuel Pump to			
ES.13.	046 E 6336	2						Washer) Cylinder Block			
ES.14.	A046 E 6496	2						Stud)			

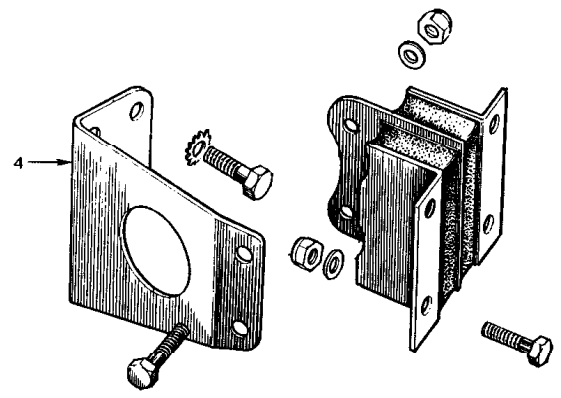
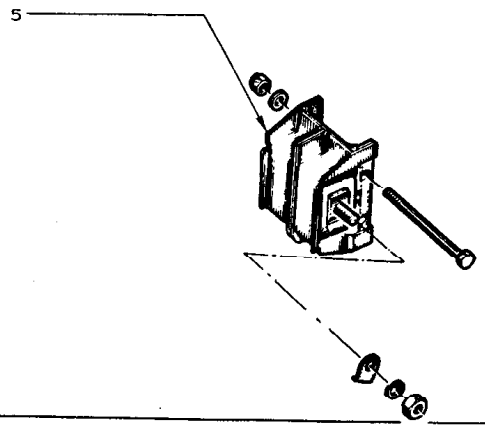
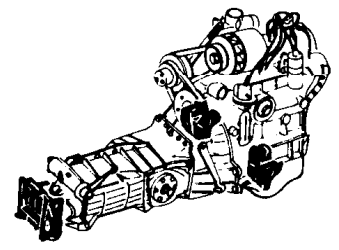
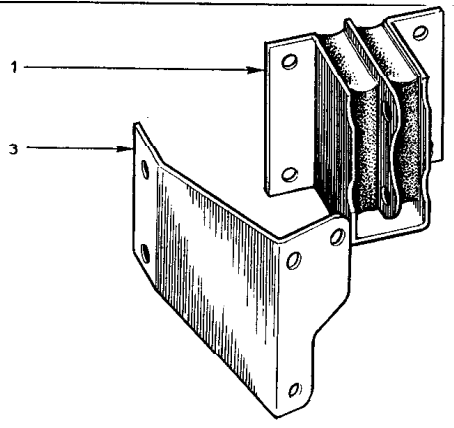


PLATE Ref: No.	PART No.	QUANTITY					STEERING		DESCRIPTION	CHANGE POINT	BULLETIN REFERENCE
		ALL	S1.	S1. Mk 1	S2.	S2. Fed.	RH	LH			
ET.1	026 E 0374	2							Engine Mounting replaced by 054 E 6000		Service III 1969/27
	054 E 6000	2						Engine Mounting			
	XUFS 0612	4						Bolt)			
	YUFN 060F	4						Nut) Engine Mounting to Bracket			
	A06 W 1207	4						Washer)			
	XUFS 0512	8						Bolt)			
	YUFN 050F	8						Nut) Engine Mounting to Chassis			
	A05 W 1007	8						Washer)			
	ET.3	046 E 0377	1						Mounting Bracket LH		
ET.4	046 E 0378	1						Mounting Bracket RH			
	046 E 6460	4						Bolt - Upper 8 x 25 mm.)	Mounting Bracket to Engine		
	046 E 6461	2						Bolt - Lower 10 x 30 mm.)			
	A046 W 6114	4						Washer - 8 mm.)			
	046 E 6456	2						Washer - 10 mm.)			
ET.5	046 F 6146	1						Gear Box Mounting (697-04)		Upto Engine No.	
A046 P 6195	1							Gear Box Mounting (697-04)	From Engine No.		
								(821-30)	From Engine No. 0001		
	046 E 6462	2						Bolt - 8 x 100 mm.)	Gear Box Mounting to Gear Box.		
	A046 W 6105	2						Nut)			
	A046 W 6002	2						Washer)			