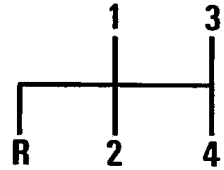


TYPE . 336-08



TYPE. 336-26  
336-46  
336-56

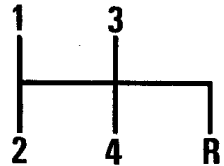


PLATE Ref: No.	PART No.	QUANTITY					STEERING		DESCRIPTION	CHANGE POINT	BULLETIN REFERENCE
		ALL	ST.	ST. Mk 1	S2.	S2. Fed.	RH	LH			
RA.1.	046 P 0723		1	1					Gearbox (Type 336.08)	Upto Eng. No. 0319 excluding 283 & 304 From Eng. No. 0320 including 283 & 304 From Eng. No. to From Eng. No. 0001 to From Eng. No. From Eng. No.	1967/71
	A046 P 0723			1				Gearbox (Type 336.26)			
	054 P 0723				1	1		Gearbox (Type 336.46) (697-04)  (821-30)			
	A054 P 0723				1	1		Gearbox (Type 336.56) (697-04)  (821-30)			

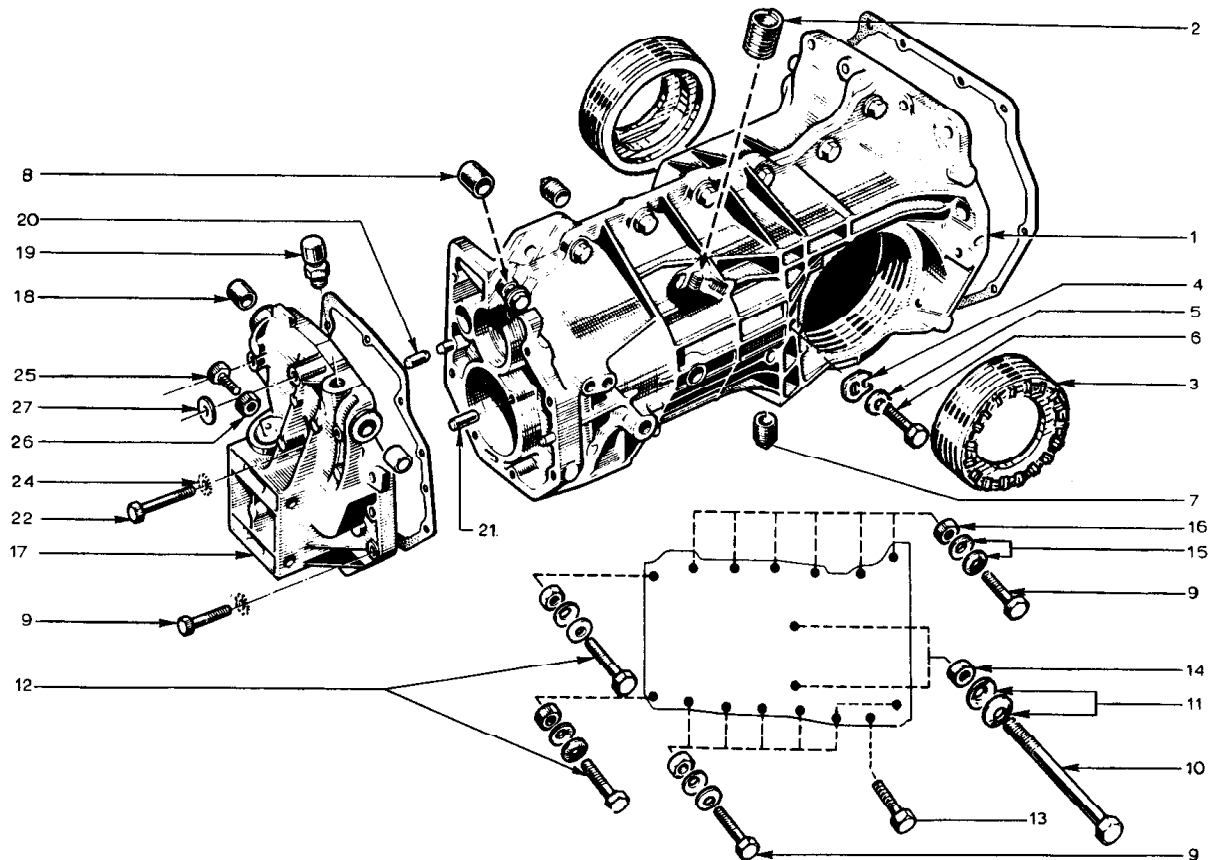


PLATE Ref: No.	PART No.	QUANTITY					STEERING		DESCRIPTION	CHANGE POINT	BULLETIN REFERENCE
		ALL	SI.	SI. Mk 1	S2.	S2. Fed.	RH	LH			
FB.1.	046 F 6014	-							Replaced by 046 F 6014A		
	046 F 6014A	1							Gearbox Casing (697-04)	Upto Chassis No.	
	A046 F 6014	1							Gearbox Casing (Type 336-46)	From Chassis No. to	
	B046 F 6014	1							Gearbox Casing (Type 336-56)	From Chassis No.	
FB.2.	046 F 6013	1							Helicoil		
FB.3.	046 F 6001	2							Nut - Bearing Retaining		
FB.4.	046 F 6015	2							Lock Tab )		
FB.5.	A046 W 6083	2							Washer ) Bearing Retaining Nut		
FB.6.	A046 W 6019	2							Bolt )		
FB.7.	046 F 6002	2							Plug - Oil Drain/Oil Level		
FB.8.	046 F 6003	2							Spacer		
FB.9.	A046 W 6086	17							Bolt - 7 x 30		
FB.10.	A046 W 6088	2							Bolt - 8 x 112		
FB.11.	A046 W 6091	4							Washer		
FB.12.	A046 W 6090	2							Bolt - 7 x 40		
FB.13.	A046 W 6089	1							Bolt - 7 x 35		
FB.14.	A046 W 6087	2							Nut		
FB.15.	A046 W 6085	30							Washer		
FB.16.	A046 W 6084	15							Nut		
FB.17.	046 F 6008	1							Rear Gearbox Casing (697-04)	Upto Engine No. 0319 including 0283 & 0304	
	A046 F 6008	1							Rear Gearbox Casing (697-04)  (821-30)	From Engine No. 0320 excluding 0283 & 0304  From Engine No. 0001	

PLATE Ref: No.	PART No.	QUANTITY					STEERING		DESCRIPTION	CHANGE POINT	BULLETIN REFERENCE
		ALL	S1.	S1. Mk 1	S2.	S2. Fedt.	RH	LH			
FB. 18.	046 F 6006		2	2	2				Bush (697-04)		
	046 F 6006					1			Bush )		
	A046 F 6006					1			Bush ) (821-30)		
FB. 19.	046 F 6005								Breather		
FB. 20.	046 F 6004		2						Dowel Pin		
FB. 21.	046 F 6009		1						Dowel Pin		
FB. 22.	A046 W 6092		3						Bolt 7 x 50		
FB. 24.	A046 W 6093		8						Washer		
FB. 25.	A046 W 6095		1						Bolt		
FB. 26.	A046 W 6094		1						Nut		
FB. 27.	A046 W 6036		1						Washer		
	046 F 6177		1						Gasket Set		

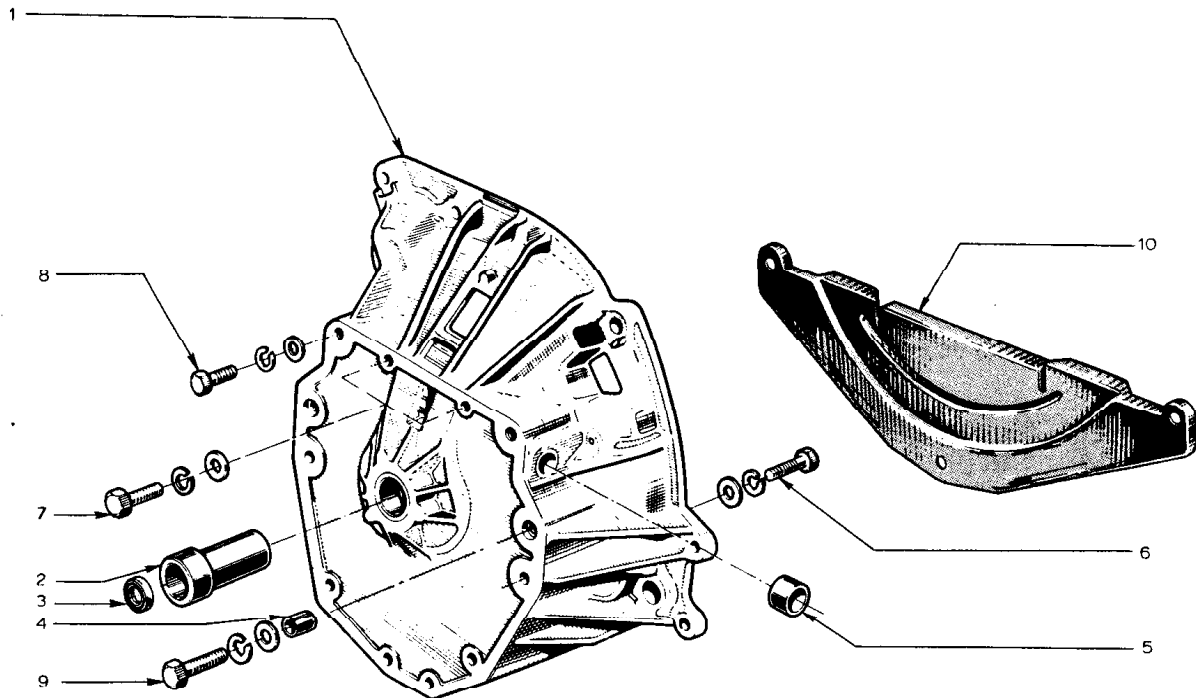


PLATE Ref. No.	PART No.	QUANTITY					STEERING		DESCRIPTION	CHANGE POINT	BULLETIN REFERENCE
		ALL	Sl.	Sl. Mk 1	S2.	S2. Fed.	RH	LH			
FC.1.	046 F 6020	1							Bell Housing (697-04) (Type 336-26)	Up to Engine No. Up to Gearbox No. 0420	
	A046 F 6020	1							Replaced by A046 F 6020 together with: 3 off A046 W 6116 Bolt Ball Housing (Type 336-26) (Type 336-46)	From Chassis No. From Gearbox No. 0421 From Gearbox No. 0001	
FC.2.	046 F 6021	1							Seal Carrier		
FC.3.	046 F 6022	1	1	1					Seal (697-04)		
	A046 F 6022				1				Seal (821-30)		
FC.4.	046 F 6023	2							Bushing		
FC.5.	046 F 6024	2							Bushing - Cross Shaft		
FC.6.	A046 W 6081	6							Bolt 8 x 30		
FC.7.	A046 W 6098	2							Bolt 8 x 25		
	A046 W 6018	8							Spring Washer		
	A046 W 6002	8							Washer		
FC.8.	A046 W 6097	2							Bolt 10 x 35		
FC.9.	A046 W 6009	2							Bolt 10 x 45		
	A046 W 6009	4							Spring Washer		
	A046 W 6010	4							Washer		
	A046 F 6196				2				Plug		
	A046 F 6196					2			(Type 336-26) Plug	From Gearbox No. 0421	
FC.10.	A046 F 6200	1							(Type 336-46) Dirt Shield	From Gearbox No. 0066	

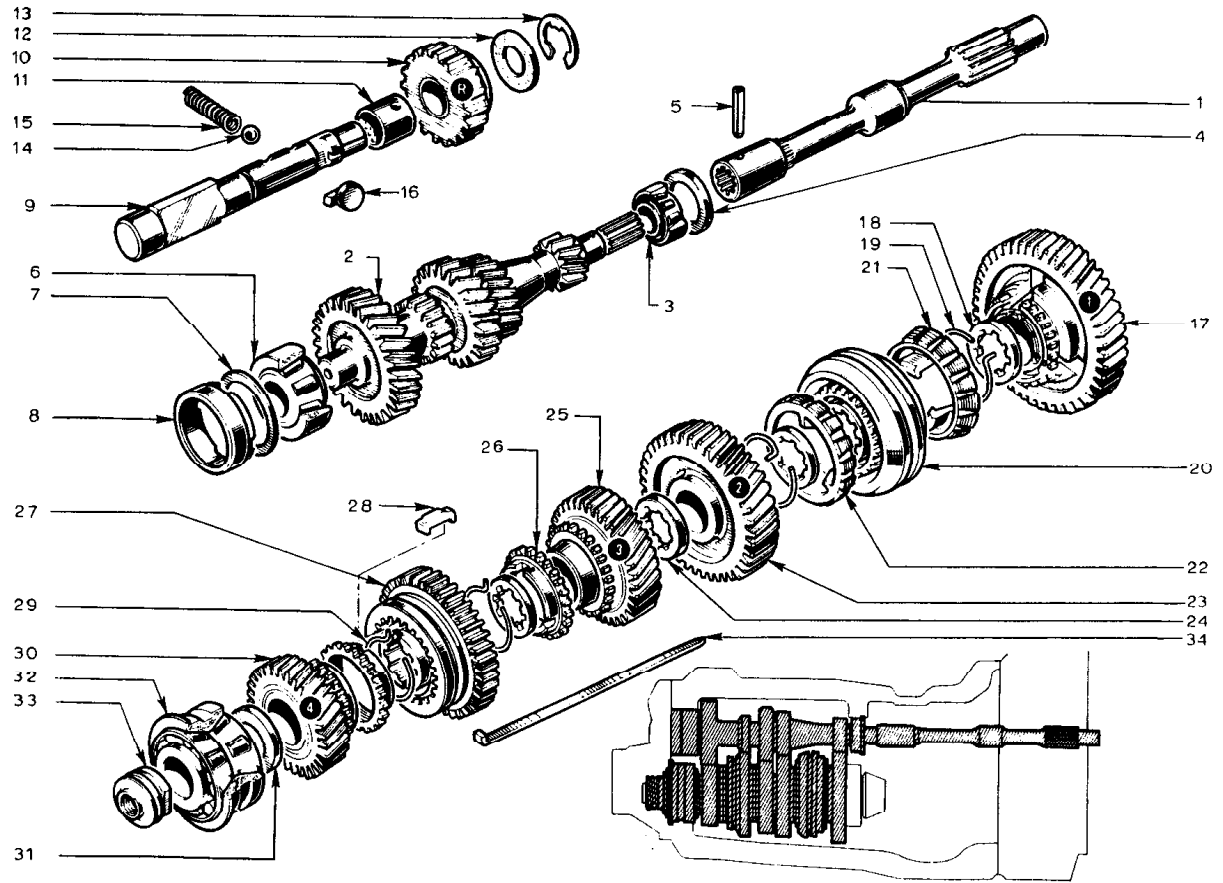




PLATE Ref: No.	PART No.	QUANTITY					STEERING		DESCRIPTION	CHANGE POINT	BULLETIN REFERENCE
		ALL	SI.	SI. Mk 1	S2.	S2. Fed.	RH	LH			
FD.1.	046 F 6050	1							Drive Shaft		
FD.2.	046 F 6034	1							Primary Shaft (Type 336-08, 336-26 & 336-46)		
	A046 F 6034	1							Primary Shaft (Type 336-56)		
FD.3.	046 F 6051								Bearing - Primary Shaft		
FD.4.	046 F 6082	AR							Shim 2.00 mm. )		
	046 F 6083	AR							Shim 2.25 mm. )		
	046 F 6084	AR							Shim 2.50 mm. )		
	046 F 6085	AR							Shim 2.75 mm. )	Optional	
	046 F 6086	AR							Shim 3.00 mm. )		
	046 F 6087	AR							Shim 3.25 mm. )		
	046 F 6088	AR							Shim 3.50 mm. )		
	046 F 6089	AR							Shim 3.75 mm. )		
	046 F 6090	AR							Shim 4.00 mm. )		
FD.5.	046 F 6033	1							Tension Pin		
FD.6.	046 F 6035	1							Bearing - Primary Shaft		
FD.7.	046 F 6077	AR							Shim - 0.10 mm. )		
	046 F 6078	AR							Shim - 0.20 mm. )		
	046 F 6079	AR							Shim - 0.25 mm. )	Optional	
	046 F 6080	AR							Shim - 0.50 mm. )		
	046 F 6081	AR							Shim - 1.00 mm. )		
FD.8.	046 F 6036	1							Retaining Ring		
FD.9.	046 F 6031	1							Shaft - Reverse Gear (Type 336-08, 336-26 & 336-46)		
	A046 F 6031	1							Shaft - Reverse Gear (Type 336-56)		
FD.10.	046 F 6027	1							Reverse Gear		
03.70											

PLATE Ref: No.	PART No.	QUANTITY					STEERING		DESCRIPTION	CHANGE POINT	BULLETIN REFERENCE
		ALL	SI.	SI. Mk 1	S2.	S2. Fed.	RH	LH			
FD.11.	046 F 6028	1							Bush - Reverse Gear		
FD.12.	046 F 6026	1							Thrust Washer		
FD.13.	046 F 6025	1							Circlip		
FD.14.	046 F 6030		1	1	1				Selector Ball - 8 mm. - Reverse Gear Shaft (Type 336-08, 336-26 & 336-46)		
	A046 F 6030				1	1			Selector Ball - 10 mm. - Reverse Gear Shaft (Type 336-56)		
FD.15.	046 F 6029		1	1	1				Selector Spring (Type 336-08, 336-26 & 336-46)		
	A046 F 6029				1	1			Selector Spring (Type 336-56)		
FD.16.	046 F 6032		1	1	1				Guide (Type 336-08, 336-26 & 336-46)		
	A046 F 6032				1	1			Guide (Type 336-56)		
FD.17	046 F 6053	1							Gear - 1st. Speed	Upto Engine No.	
	A046 F 6053	1							Gear - 1st. Speed	From Engine No.	
FD.18.	046 F 6038	3							Thrust Washer		
FD.19.	046 F 6052	2							Spring Clip - Synchroniser, 1st. & 2nd. Speed		
FD.20.	046 F 6056	1							Synchroniser Hub, (Yellow) (Type 336-08, 336-26 & 336-46)		
	046 F 6058	1							Synchroniser Hub, (Yellow) (Type 336-56)		
	046 F 6057	1							Synchroniser Hub, (Blue) (Type 336-08, 336-26 & 336-46)		
	046 F 6059	1							Synchroniser Hub, (Blue) (Type 336-56)		
FD.21.	046 F 6054	1							Synchroniser Ring - 1st. Speed.		
FD.22.	046 F 6060	1							Synchroniser Ring - 2nd. Speed.		
03.70											

PLATE Ref. No.	PART No.	QUANTITY					STEERING		DESCRIPTION	CHANGE POINT	BULLETIN REFERENCE
		ALL	ST.	ST. Mk 1	S2.	S2. Fed.	RH	LH			
FD.23.	046 F 6061	1							Gear - 2nd. Speed (Type 336-08 & 336-26)		
	A046 F 6061	1							Gear - 2nd. Speed (Type 336-46)		
	B046 F 6061	1							Gear - 2nd. Speed - 43 teeth. (Type 336-56)		
FD.24.	046 F 6062	1							Thrust Washer		
FD.25.	046 F 6037	1							Gear - 3rd. Speed		
FD.26.	046 F 6046	2							Synchroniser Ring - 3rd. & 4th. Speed		
FD.27.	046 F 6042	1							Synchroniser, 3rd. & 4th. Speed (Yellow)		
	046 F 6043	1							Synchroniser, 3rd. & 4th. Speed (Blue)		
FD.28.	046 F 6039	3							Keys - 3rd. & 4th. Speed Synchroniser		
FD.29.	046 F 6040	2							Spring Clip - 3rd. & 4th. Speed Synchroniser	Upto Chassis No.	
	A046 F 6040	2							Spring Clip - 3rd. & 4th. Speed Synchroniser	From Chassis No.	
FD.30.	046 F 6047	1							Gear - 4th. Speed		
FD.31.	046 F 6064	AR							Shim - 3.50 mm. )		
	046 F 6065	AR							Shim - 3.55 mm. )		
	046 F 6066	AR							Shim - 3.60 mm. )		
	046 F 6067	AR							Shim - 3.65 mm. )		
	046 F 6068	AR							Shim - 3.70 mm. )		
	046 F 6069	AR							Shim - 3.75 mm. )	Optional	
	046 F 6070	AR							Shim - 3.80 mm. )		
	046 F 6071	AR							Shim - 3.85 mm. )		
	046 F 6072	AR							Shim - 3.90 mm. )		
	046 F 6073	AR							Shim - 3.95 mm. )		
	046 F 6074	AR							Shim - 4.00 mm. )		
	046 F 6075	AR							Shim - 4.05 mm. )		
	046 F 6076	AR							Shim - 4.10 mm. )		

PLATE Ref: No.	PART No.	QUANTITY					STEERING		DESCRIPTION	CHANGE POINT	BULLETIN REFERENCE
		ALL	S1.	S1. Mk 1	S2.	S2. Fed.	RH	LH			
		FD. 32.	046 P 6048	1							
FD. 33.	046 P 6049	1						Nut - Pinion			
FD. 34.	046 P 6063	1						Key			

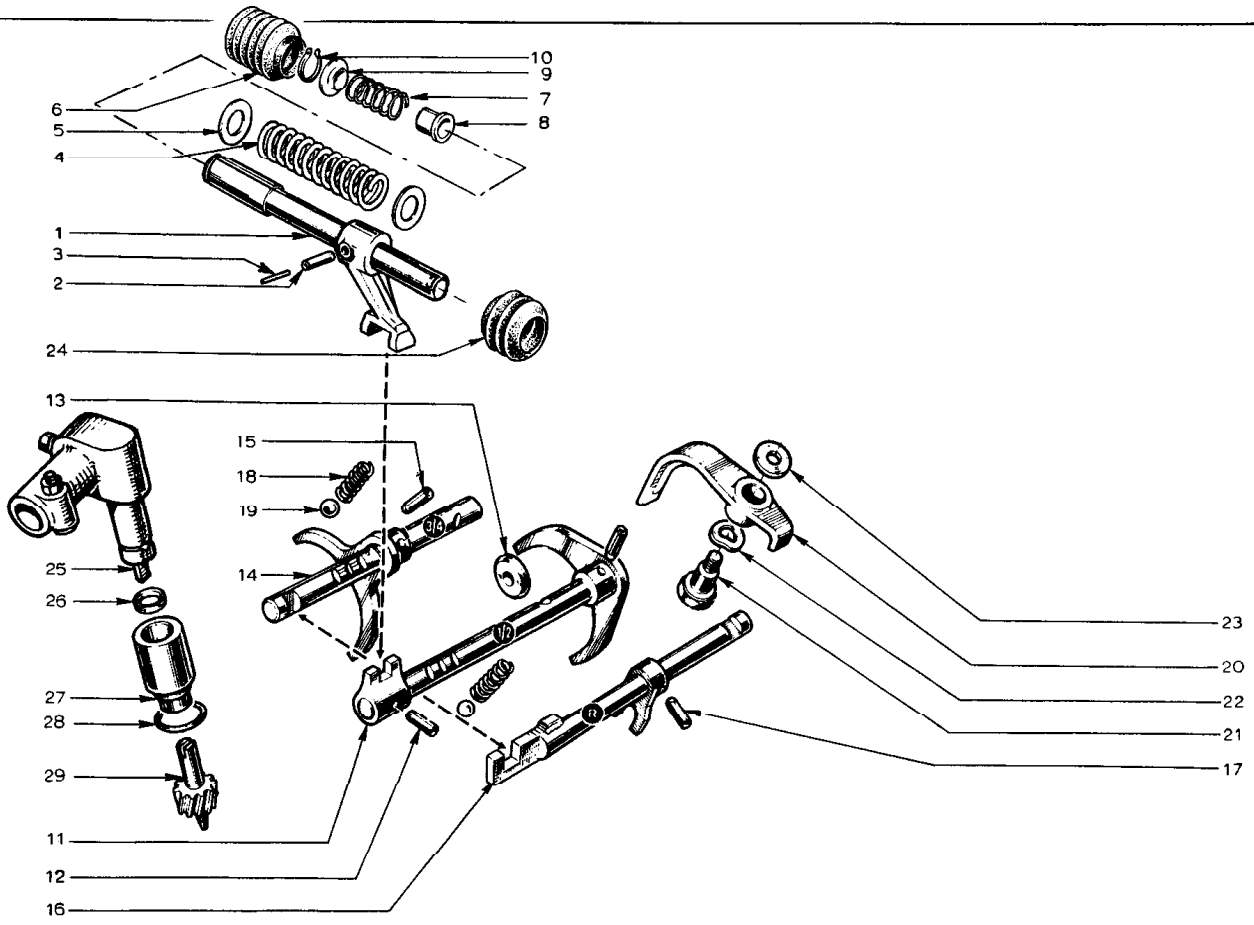


PLATE Ref: No.	PART No.	QUANTITY					STEERING		DESCRIPTION	CHANGE POINT	BULLETIN REFERENCE
		ALL	SI.	SI. Mk 1	S2.	S2. Fed.	RH	LH			
FE.1.	046 F 6095	1							Cross Shaft (697-04)	Up to Engine No. 0319 excluding 0283 & 0304	
	054 F 6005	1							Cross Shaft (607-04)		
FE.2.	046 F 6096	2							Tension Pin 7 x 25 mm - outer	Up to Engine No. From Engine No. 0320 including 0283 & 0304	
	A046 F 6096	1							Tension Pin 7 x 25 mm - outer		
FE.3.	046 F 6097	2							Tension Pin 4 x 25 mm - inner	From Engine No.  Up to Engine No. 0319 excluding 0283 & 0304	
FE.4.	046 F 6094	1							Spring (697-04)		
	A046 F 6094	1							Spring	From Engine No. 0320 including 0283 & 0304	
FE.5.	046 F 6093	2							Washer (697-04)	Up to Engine No. Up to Engine No. 0319 Excluding 0283 & 0304	
	A046 F 6093	1							Washer		
FE.6.	046 F 6092	1							Rubber Boot	From Engine No. From Engine No.	
FE.7.	A065 F 0726	1							Spring - Cross Shaft		
FE.8.	A046 F 6198	1							Cup - Spring	From Engine No. Up to Engine No. 0319	
FE.9.	A046 F 6199	1							Abutment - Spring		
FE.10.	046 F 6091	1							Circclip - Cross Shaft (697-04)	From Engine No. 0320	
	A046 F 6091	1							Circclip - Cross Shaft		
FE.11.	A046 F 6109	1							Selector Shaft with fork 1st. & 2nd. speed (Type 336-08)		
	CO46 F 6109	1							Selector Shaft and fork 1st. & 2nd. speed (Type 336-46)		

PLATE Ref: No.	PART No.	QUANTITY					STEERING		DESCRIPTION	CHANGE POINT	BULLETIN REFERENCE
		ALL	ST.	ST. Mk 1	S2.	S2. Fed.	RH	LH			
	D046 F 6109	1							Selector Shaft and folk 1st. & 2nd. speed (Type 336-56)		
FE.12.	046 F 6110	1							Tension Pin 5 x 22 mm.		
FE.13.	046 F 6100	1							Disc		
FE.14.	046 F 6103	1							Selector Shaft with folk, 3rd. & 4th. speed	Upto Engine No. 0319 excluding 0283 & 0304	
	A046 F 6103	1							Selector Shaft & folk, 3rd. & 4th. speed (Type 336-46)	From Engine No. 0320	
	B046 F 6103	1							Selector Shaft & folk 3rd. & 4th. speed (Type 336-56)		
FE.15.	046 F 6099	2							Tension Pin 5 x 20 mm.		
FE.16.	046 F 6111	1							Selector Shaft with folk - reverse	Upto Engine No. 0319 excluding 0283 & 0304	
	054 F 6006	1							Selector Shaft with folk - reverse	From Engine No. 0320 including 0283 & 0304	
	054 F 6007	1							Selector Shaft with folk - reverse (Type 336-08, 336-26 & 336-46)		
FE.17.	046 F 6123								Tension Pin		
FE.18.	046 F 6101	2							Spring - Selector Ball (Type 336-08, 336-26 & 336-46)		
	A046 F 6101	2							Spring - Selector Ball (Type 336-56)		
FE.19.	046 F 6030	2							Ball - 8 mm. Selector		
	A046 F 6030	2							Ball - 10 mm. Selector		
FE.20.	046 F 6120	1							Selector Bracket		
FE.21.	046 F 6122	1							Bolt )		
FE.22.	046 F 6121	1							Washer ) Selector Fixing		
FE.23.	046 F 6119	1							Spacer Washer )		
03.70											

PLATE Ref: No.	PART No.	QUANTITY					STEERING		DESCRIPTION	CHANGE POINT	BULLETIN REFERENCE
		ALL	SI.	SI. Mk 1	S2.	S2. Fed.	RH	LH			
		FE.24.	046 F 6098	1							
FE.25.	046 F 6104	1						Drive Angle - Speedometer			
FE.26.	046 F 6105	1						Seal Ring - Speedometer Drive			
FE.27.	046 F 6106	1						Guide - Speedometer Drive Gear			
FE.28.	046 F 6107	1						'O' Ring - Speedometer Drive Gear Guide to Gearbox			
FE.29.	046 F 6108	1						Drive Gear - Speedometer			



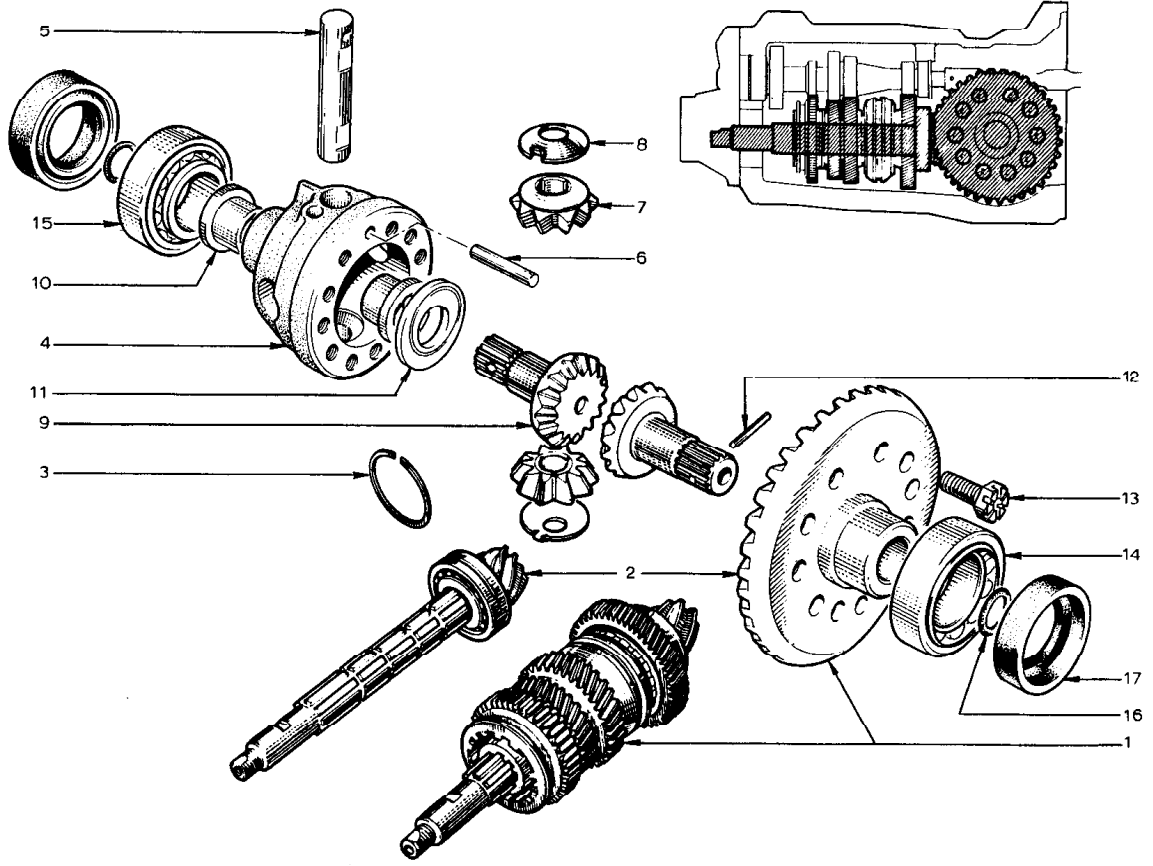


PLATE Ref: No.	PART No.	QUANTITY					STEERING		DESCRIPTION	CHANGE POINT	BULLETIN REFERENCE
		ALL	SI.	SI. Mk 1	S2.	S2. Fed.	RH	LH			
FF.1.	046 F 6143	1							Crown Wheel & Pinion with Gear Set (Type 336-08)		
	A046 F 6143	1							Crown Wheel & Pinion with Gear Set (Type 336-46)		
	B046 F 6143	1							Crown Wheel & Pinion with Gear Set (Type 336-56)		
FF.2.	046 F 6131	1							Crown Wheel & Pinion - Yellow		
	046 F 6132	1							Crown Wheel & Pinion - Blue		
FF.3.	046 F 6129	1							Cirelip		
FF.4.	046 F 6127	-							Replaced by:		Upto Engine No.
	A046 F 6192	1							A046 F 6192 together with 1 off A046 F 6193 Differential Pin 1 off A046 F 6124 Tension Pin		
FF.5.	046 F 6125	1							Carrier - Crown Wheel		From Engine No.
	A046 F 6193	1							Differential Pin (697-04)		Upto Engine No.
	B046 F 6193	1							Differential Pin (697-04)		From Engine No.
FF.6.	046 F 6124	1							Differential Pin		From Engine No. to
	A046 F 6124	1							Differential Pin		From Engine No.
FF.7.	046 F 6136	2							Tension Pin 4 x 40 mm.		Upto Engine No.
	A046 F 6136	2							Tension Pin 5 x 40 mm.		From Engine No.
FF.8.	046 F 6135	2							Star Wheel		Upto Engine No.
	046 F 6135	2							Star Wheel		From Engine No.
FF.9.	046 F 6138	2							Shim - Star Wheel		
FF.10.	046 F 6137	2							Drive Shaft		
FF.11.	046 F 6144	AR							Bushing - Drive Shaft		
	046 F 6145	AR							Shim ) Shim ) Optional		
03.70											

PLATE Ref: No.	PART No.	QUANTITY					STEERING		DESCRIPTION	CHANGE POINT	BULLETIN REFERENCE
		ALL	S1.	S1. Mk 1	S2.	S2. Fed.	RH	LH			
FP. 12.	046 P 6188	2							Tension Pin 7 x 40 mm.		
FP. 13.	046 P 6194	10							Screw - Crown Wheel to Carrier		
FP. 14.	046 P 6142	1							Bearing )		
FP. 15.	046 P 6126	1							Bearing ) Differential Carrier		
FP. 16.	046 P 6140	2							10° Ring		
FP. 17.	046 P 6141	2							Seal Ring )		
	046 P 6141A	2							Seal Ring ) Optional		

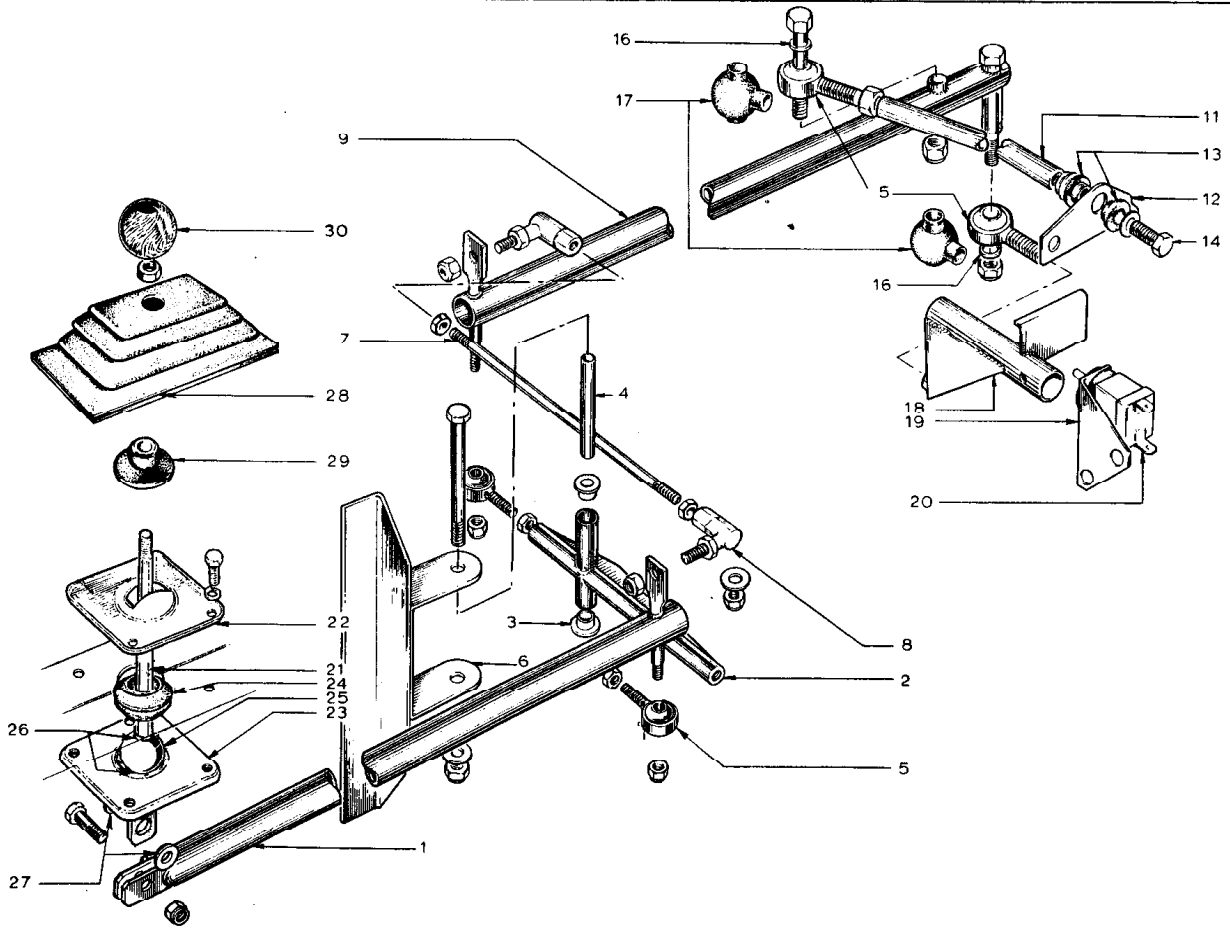
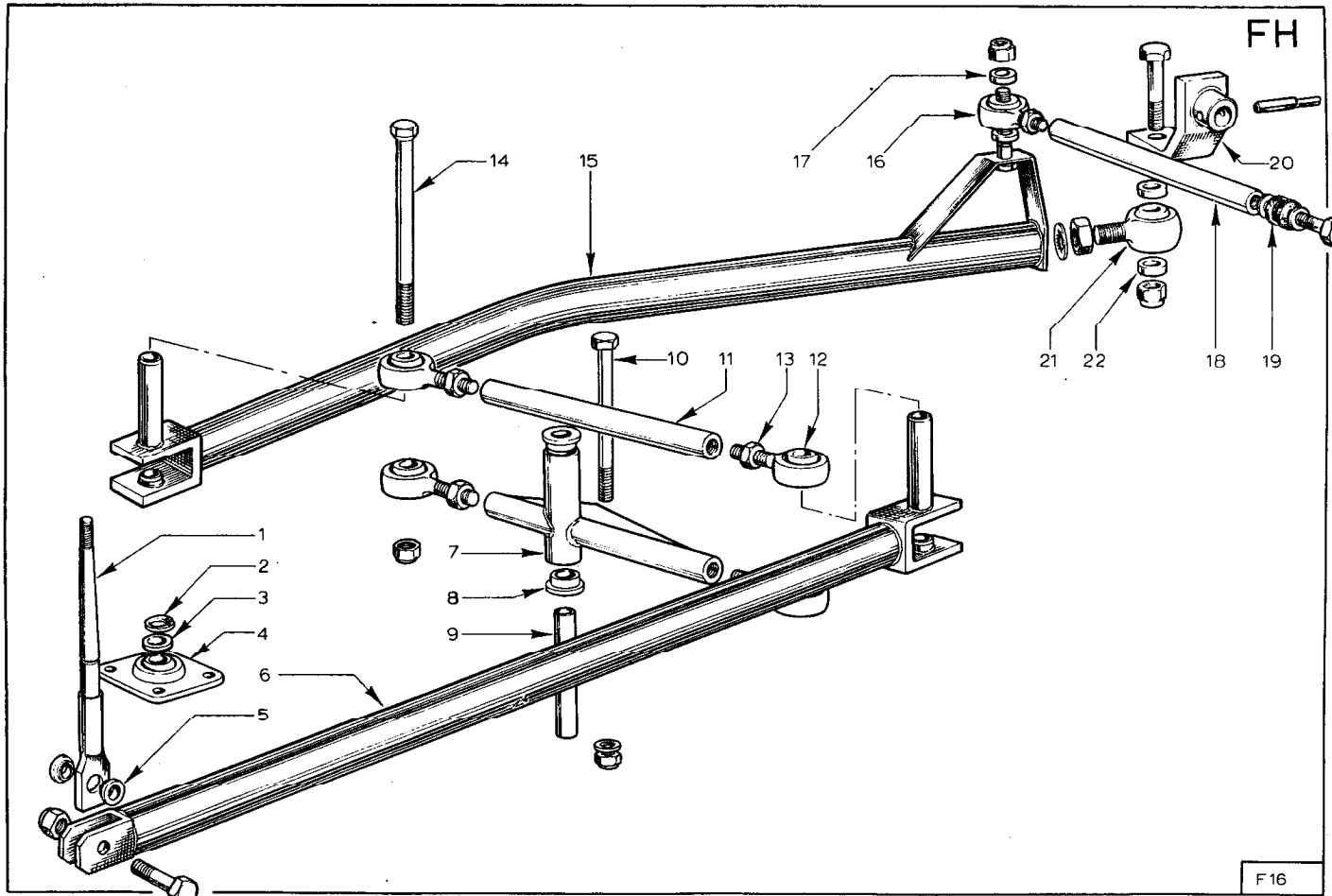


PLATE Ref. No.	PART No.	QUANTITY					STEERING		DESCRIPTION	CHANGE POINT	BULLETIN REFERENCE
		ALL	SI.	SI. Mk 1	S2.	S2. Fed.	RH	LH			
FG.1.	046 F 0123		1	1					Longitudinal Link - Front		
	054 F 0123				1	1		Longitudinal Link - Front			
FG.2.	046 F 0127	1							Relay Lever		
FG.3.	046 F 6163	2							Bush - Relay Lever		
FG.4.	054 0151 (W027)	1							Swivel Tube - Relay Lever		
	046 F 6161	-							Replaced by A046 F 6161	Up to Chassis No. 2339 From Chassis No. 2340	Service III 1969/35
FG.5.	A046 F 6161	4							Ball Joint		
	AUPN 050H	2							Nut - Ball Joint to Relay Lever		
	YUPN 040F	2							Nut ) Ball Joint to Link		
	A04 W 0803	2							Washer )		
FG.6.	046 F 0128		1	1					Bracket - Relay Lever Mounting		
	054 F 0128				1	1			Bracket - Relay Lever Mounting		
	XUPB 0456	1							Bolt )		
	A04 W 0803	1							Washer ) Relay Lever to Mounting Bracket		
	YUPN 040F	1							Nut )		
	W0050	2	2						Bush )		
	X29B 0750	2	2						Bolt ) Bracket to Engine		
	A04 W 0905	2	2						Washer )		
FG.7.	046 F 0126		1	1					Link - Transverse		
	A046 F 0126				1	1			Link - Transverse		
FG.8.	046 F 6160	-							Replaced by A046 F 6160	Up to Chassis No. 0344 From Chassis No. 0345	
	A046 F 6160	2							Ball Joint - Transverse Link		
	AUPN 040H	2							Nut - Ball Joints to Transverse Link		
	YUPN 050F	2							Nut - Ball Joints to Longitudinal Links		
	046 F 0124		1	1					Longitudinal Link, Rear.		

PLATE Ref. No.	PART No.	QUANTITY					STEERING		DESCRIPTION	CHANGE POINT	BULLETIN REFERENCE
		ALL	ST.	ST. Mk 1	S2.	S2. Fed.	RH	LH			
PG. 9.	054 F 0124				1	1			Longitudinal Link, Rear		
	046 F 6159		1	1					Bush, Longitudinal Link		
PG. 11.	054 F 0144				1	1			Location Link		
PG. 12.	054 F 0146				1	1			Reaction Plate		
PG. 13.	054 F 6003				2	2			Grommet )		
	A05 W 1007				2	2			Washer ) Reaction Plate to Location Link		
PG. 14.	XUPB 0520				1	1			Bolt )		
PG. 16.	054 F 0145				2	2			Spacer		
PG. 17.	054 F 6002				2	2			Dust Seal		
	XUPB 0536				1	1			Bolt )		
	A05 W 1007				1	1			Washer ) Location Link to		
	YUPN 050F				1	1			Nut ) Longitudinal Link		
	LUPN 050H				1	1			Nut - Ball Joint to Location Link		
	046 F 6155		1	1					Actuator with Bush		
PG. 18.	054 F 0121				1	1			Actuator		
	LUPN 050H				1	1			Nut - Ball Joint to Actuator		
	XUPB 0548				1	1			Bolt )		
	A05W 1007				1	1			Washer ) Rear Longitudinal		
	YUPN 050F				1	1			Nut ) Link to Actuator		
	XUPB 0524				1	1			Bolt )		
	XUPB 0528				1	1			Bolt )		
	A05 W 1007				1	1			Washer ) Reaction Plate to Gearbox		
	YUPN 050F				2	2			Nut )		

PLATE Ref. No.	PART No.	QUANTITY					STEERING		DESCRIPTION	CHANGE POINT	BULLETIN REFERENCE
		ALL	ST.	ST. Mk 1	S2.	S2. Fed.	RH	LH			
	XMPB 0630				1	1			Bolt 6 x 30 mm. )		
	LJMN 060F				1	1			Nut ) Actuator to Selector Shaft		
	A04 W 0803				1	1			Washer )		
FG.19.	054 P 0141				1	1			Mounting Bracket, Reverse Lamp Switch		
FG.20.	054 M 6000				1	1			Switch - Reverse Lamps		
	A065 M 6000				1	1			Switch - Reverse Lamps		
FG.21.	046 P 0001	1							Gear Lever		
FG.22.	046 P 0131	1							Mounting Plate Upper		
FG.23.	046 P 0132	1							Mounting Plate Lower		
	046 P 0139	2							Spacer		
FG.24.	046 P 6148	1							Ball Joint, Outer		
	046 P 6147	-							Replaced by 046 P 6113		
FG.25.	046 P 6113	1							Ball Joint, Inner		
FG.26.	054 P 6004	2							Circlip - Ball to Lever		
FG.27.	046 P 6153	2							Bush )		
	XUPB 0413	1							Bolt ) Gear Lever to Front Longitudinal		
	YUPN 040F	1							Nut ) Link		
	YUPS 0310	4							Screw )		
	S03 W 0000	4							Mounting Plate Fixing		
	036 F 6000		1	1					Washer )		
FG.28.	050 P 6000				1	1			Grommet - Gear Lever		
FG.29.	A036 B 6186				1	1			Grommet - Gear Lever		
	046 P 6178		1	1					Grommet		
FG.30.	050 P 0002				1				Knob - Gear Lever		
	054 F 0002								Knob - Gear Lever		
	LJFN 050H				1	1			Knob - Gear Lever		
	046 B 1038	1	1						Lock Nut		
									Mounting Plate - Gear Lever Grommet		

To  
From



FH

F16



PLATE Ref: No.	PART No.	QUANTITY					STEERING		DESCRIPTION	CHANGE POINT	BULLETIN REFERENCE
		ALL	SI.	SI. MK I	S2.	S2. Fed.	RH	LH			
PH.1.	A065 P 0155				1	1			Gear Lever		
PH.2.	046 P 6156				1	1			Circlip		
PH.3.	065 P 0156				1	1			Spacer		
PH.4.	065 P 0169				1	1			Bearing Plate		
	XUPS 0390				4	4			Setscrow )		
	A03 V 0605				4	4			Washer ) Bearing Plate to Tunnel		
	LUPM 100P				4	4			Locknut )		
PH.5.	046 P 6153				2	2			Bush )		
	XUPB 0413				1	1			Bolt ) Gear Lever to Front Link		
	YUPM 040P				1	1			Locknut )		
PH.6.	A065 P 0158				1	1			Longitudinal Link - Front		
PH.7.	B05A P 0127				1	1			Relay Lever		
PH.8.	046 P 6163	2							Nylon Bush		
PH.9.	05A P 0151	1							Swivel Tube		
PH.10.	XUPB 0456	1							Bolt		
	A04W 0803	1							Washer		
	YUPM 040P	1							Locknut		
PH.11.	A065 P 0160				1	1			Link Tube		
PH.12.	046 P 6161				4	4			Ball Joint		
PH.13.	AUPM 050P				4	4			Nut		
PH.14.	A065 P 0164				2	2			Bolt - Taper Head		
	YUPM 050P				2	2			Locknut		
PH.15.	A065 P 0725				1	1			Longitudinal Link - Rear		

*type 65*

PLATE Ref: No.	PART No.	QUANTITY					STEERING		DESCRIPTION	CHANGE POINT	BULLETIN REFERENCE
		ALL	ST.	ST. Mk 1	S2.	S2. Fed.	RH	LH			
FH.16.	A065 P 6000				1	1			Ball Joint		
FH.17.	054 P 0145				2	2			Spacer		
	YUPN 050P				1	1			Locknut		
FH.18.	A065 P 0162				1	1			Location Link		
	A05W 1007				2	2			Washer )		
FH.19.	054 P 6003				2	2			Grommet ) Location Link to Gearbox		
	XUPB 0520				1	1			Bolt )		
FH.20.	A065 P 0163				1	1			Actuator - Gearbox		
	046 P 6451				1	1			Tension Pin		
FH.21.	A065 P 6001				1	1			Ball Joint		
	AUPN 060H				1	1			Nut )		
	LOGW 0000				1	1			Washer - Shakeproof ) Ball Joint to Rear Link		
	XUPB 0624				1	1			Bolt )		
FH.22.	A065 P 0170				2	2			Spacer ) Ball Joint to Actuator		
	YUPN 060P				1	1			Locknut )		