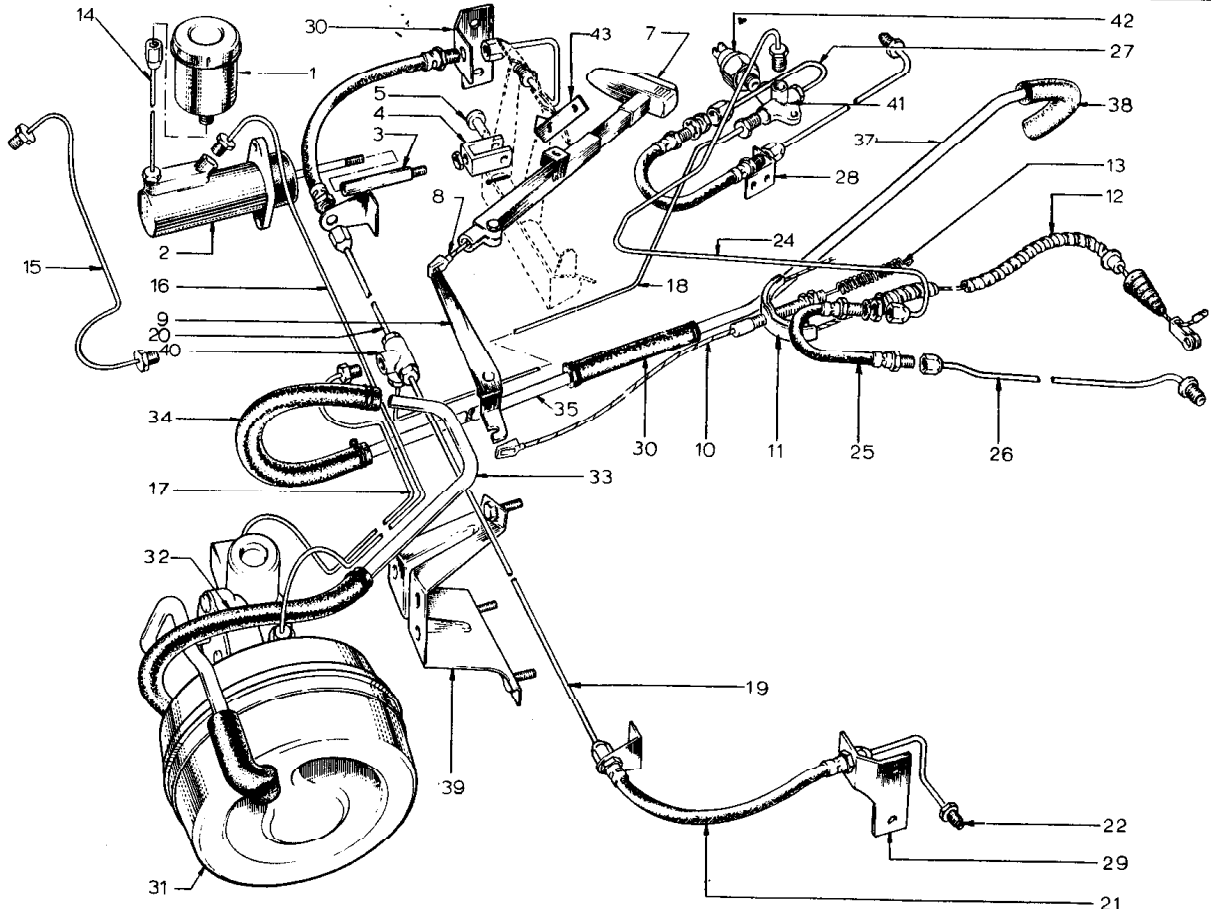


JA



0370

IC-46PL

PLATE Ref. No.	PART No.	QUANTITY					STEERING		DESCRIPTION	CHANGE POINT	BULLETIN REFERENCE
		ALL	S1.	S1. Mk 1	S2.	S2. Fed.	RH	LH			
JA.1.	046 J 6019	1	1	1							
	046 J 6041	1	1	1				Reservoir			
	046 J 0078	1	1	1				Cap - Reservoir			
JA.2.	046 J 6018	1	1	1				Mounting Bracket - Reservoir			
	046 J 6015	1	1	1				Master Cylinder			
	046 J 0075	1	1					Repair Kit - Master Cylinder			
	A046 J 0075							Adaptor			
JA.3.	A054 J 0075				1			Replaced by 054 J 0075	Up to Chassis No.		
								Adaptor	From Chassis No.		
JA.4.	046 J 0076	1						Clevis			
JA.5.	W0084	1						Clevis Pin) Clevis to Pedal			
	415	1						Split Pin)			
	046 J 0727	1	1					+ Handbrake Lever Assembly			
JA.7.	A026 J 0704				1	1	+	Handbrake Lever Assembly			
	A026 J 0705				1	1	+	Handbrake Lever Assembly			
JA.8.	046 J 0067	1						Handbrake Cable - Lever to Multiplier			
JA.9.	046 J 0058	1					+	Multiplier			
	046 J 0057	1					+	Multiplier			
	046 J 0074	1						Pivot Bolt) Multiplier to Chassis			
	W 0078	1						Washer)			
JA.10.	046 J 0068	1						Handbrake Cable - Intermediate			
JA.11.	046 J 6028	1						Compensator Assembly			
JA.12.	046 J 0069	1						Handbrake Cable - rear			
JA.13.	046 J 0016	1						Return Spring			
JA.14.	046 J 6032	1	1	1				Bundy Pipe - Reservoir to Master Cylinder.			

PLATE Ref: No.	PART No.	QUANTITY					STEERING		DESCRIPTION	CHANGE POINT	BULLETIN REFERENCE
		ALL	S1.	S1. Mk 1	S2.	S2. Fed.	RH	LH			
JA.15.	046 J 6058				1		+		Bundy Pipe - Master Cylinder to Union		
	054 J 6009				1			+	Bundy Pipe - Master Cylinder to Union		
JA.16.	046 J 6048			1	1		+		Bundy Pipe - Master Cylinder to Servo		
	046 J 6047			1	1			+	Bundy Pipe - Master Cylinder to Servo		
JA.17.	054 J 6026				1				Bundy Pipe - Servo to Union		
JA.18.	046 J 6037		1	1					Bundy Pipe - Front Union to Rear Union		
	054 J 6006				1	1			Bundy Pipe - Front Union to Rear Union		
JA.19.	046 J 6035		1	1	1				Bundy Pipe - Union to Flexible Hose LH		
JA.20.	046 J 6036		1	1	1				Bundy Pipe - Union to Flexible Hose RH		
JA.21.	046 J 6016	2							Flexible Hose - Front		
	AUPN 060H	2							Nut) Flexible Hose Retaining		
	L06W 0000	2							Washer)		
JA.22.	046 J 6044	2							Bundy Pipe - Flexible Hose to Caliper		
JA.24.	046 J 6043	1							Bundy Pipe - Union to Flexible Hose Rear, LH		
JA.25.	046 J 6020	2							Flexible Hose - Rear		
	AUPN 060H	2							Nut) Flexible Hose Retaining		
	L06W 0000	2							Washer)		
JA.26.	046 J 6042	2							Bundy Pipe - Flexible Hose to Rear Brake		
JA.27.	046 J 6045	1							Bundy Pipe - Union to Flexible Hose - Rear, RH		
JA.28.	A046 J 2002	2							Bracket		
JA.29.	046 J 2000	1							Bracket - LH		
JA.30.	046 J 2001	1							Bracket - RH		
03.70											

PLATE Ref: No.	PART No.	QUANTITY					STEERING		DESCRIPTION	CHANGE POINT	BULLETIN REFERENCE
		ALL	ST.	ST. Mk 1	S2.	S2. Fed.	RH	LH			
	046 J 6052			1					Servo Unit - Service Option		
JA.31.	054 J 6023				1				Servo Unit		
	046 J 6055			1	1				Air Filter Element, Servo		
JA.32.	046 J 6053			1	1				Vacuum Hose		
JA.33.	046 J 6051			1	1				Pipe - Vacuum		
JA.34.	046 J 6057			1	1				Vacuum Hose		
JA.35.	046 J 6050			1	1				Pipe - Vacuum		
JA.36.	054 J 6027					1			Vacuum Hose		
JA.37.	046 J 6051			1	1				Pipe - Vacuum		
JA.38.	054 J 6025					1			Vacuum Hose,		
	046 J 0099										
JA.39.	036 J 6054			1	1				Mounting Bracket - Servo		
	A054 J 0164					1			Backing Plate		
JA.40.	046 J 6017			1	1				Union - Front 4 way		
JA.41.	046 J 6017			1	1				Union - Rear 4 way		
JA.42.	046 J 6025	1							Switch - Stop Light		
	036 J 6029	1							Seal - Stop Light Switch		
JA.43.	054 J 0104	1						+	Support Bracket - Handbrake		
	XUPS 0508	2							Screw)		
	A05W 1006	2							Washer) Support Bracket to Body		
	YUPN 050P	2							Nut)		
	XUPS 0508	1							Screw)		
	YUPN	1							Nut) Handbrake Lever to Support Bracket		
										Up to Chassis No	
										From Chassis No.	

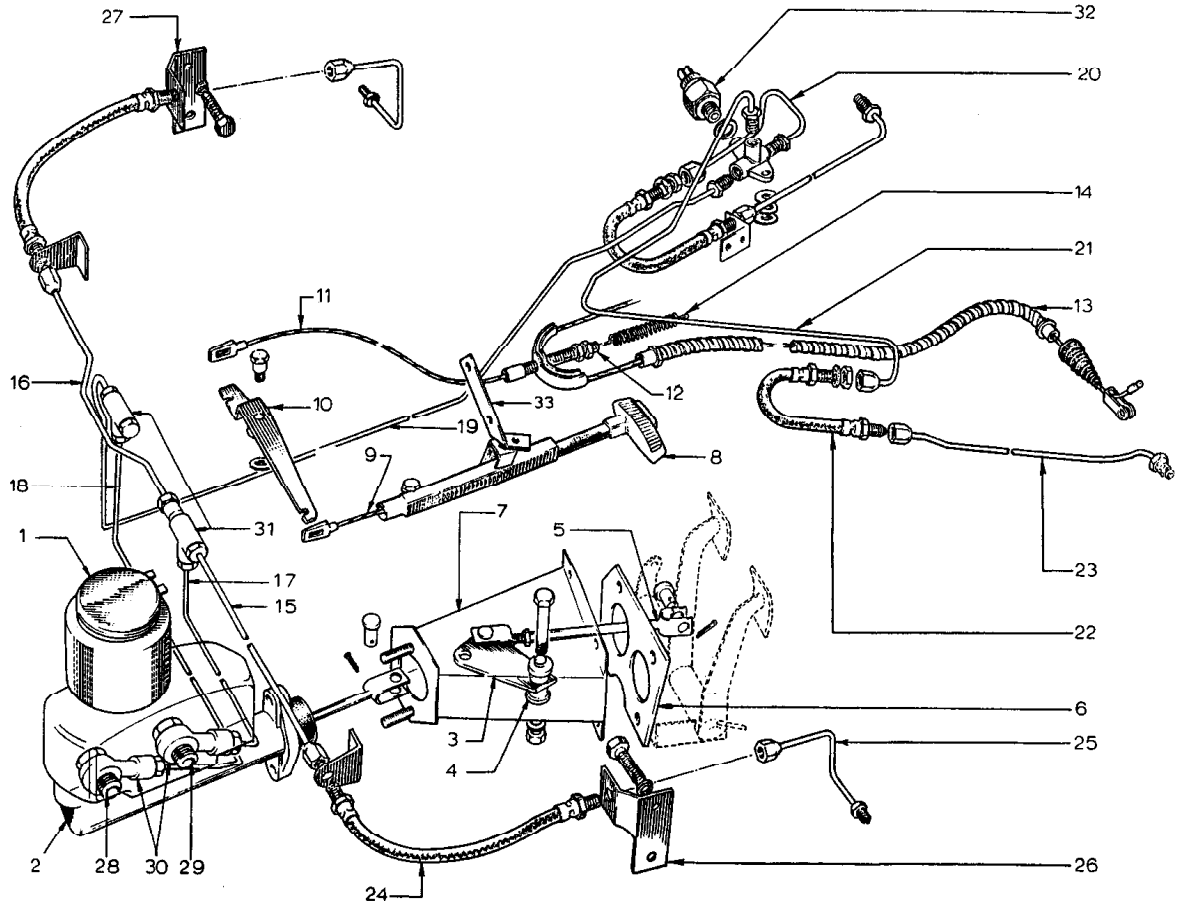


PLATE Ref. No.	PART No.	QUANTITY					STEERING		DESCRIPTION	CHANGE POINT	BULLETIN REFERENCE	
		ALL	SI.	SI. Mk I	S2.	S2. Fed.	RH	LH				
JB.1.	036 J 6069					1			Sovy Device including canister	Up to Chassis No. 2089 From Chassis No. 2090		
	054 J 0741					1			Sovy Device including canister			
	054 J 0742					1			Sovy Device			
JB.2.	065 J 0140					1			Canister	From Chassis No. 2090		
	054 J 6008					1			Master Cylinder (Tandem)			
	054 J 6019					AR			Repair Kit - Master Cylinder			
JB.3.	054 J 0114					1			Relay Lever			
JB.4.	046 F 6165					2			Bushing)			
	W 0019					1			Bushing)			
	XUPN 0436					1			Bolt) Relay Lever Mounting			
	YUPN 040P					1			Nut)			
	A04" 0904					1			Washer)			
	430B					1			Clevis Pin)	Master Cylinder Push Rod to Relay Lever		
	415					1			Split Pin)			
	JB.5.	054 J 0729					1			Adjustable Link - Brake Pedal to Relay Lever		
		430B					1			Clevis Pin)	Push Rod to Pedal	
		026 J 6098 (415)					1			Split Pin)		
W 0084						1			Clevis Pin)	Push Rod to Relay Lever		
415						1			Split Pin)			
JB.6.	054 J 0122					1			Tapping Plate - Master Cylinder Mounting			

PLATE Ref: No.	PART No.	QUANTITY					STEERING		DESCRIPTION	CHANGE POINT	BULLETIN REFERENCE
		ALL	SI.	SI. MK 1	S2.	S2. Fed.	RH	LH			
JB.7.	054 J 0115					1			Mounting Bracket - Master Cylinder Mounting		
	XUPB 0510					4			Bolt) Master Cylinder Mounting		
	LO5W 0000					4			Washer) Bracker to Tapping Plate		
	YUPN 050F					2			Nut) Master Cylinder to Mounting Bracket		
	A05W 1606					2			Washer)		
JB.8.	A026 J 0705				1	1		+	Handbrake Lever Assembly		
JB.9.	046 J 0067	1							Handbrake Cable - Lever to Multiplier		
JB.10.	046 J 0057	1						+	Multiplier		
	046 J 0058	1					+		Multiplier		
	046 J 0074	1							Pivot Bolt) Multiplier to Chassis		
	W 0078	1							Washer)		
JB.11.	046 J 0068	1							Handbrake Cable - Intermediate		
JB.12.	046 J 6028	1							Compensator Assembly		
JB.13.	046 J 0069	1							Handbrake Cable - Rear		
JB.14.	A046 J 0016	1							Return Spring		
JB.15.	054 J 6036	1							Bundy Pipe - Union to Flexible Hose, Front LH		
JB.16.	054 J 6035	1							Bundy Pipe - Union to Flexible Hose, Front RH		
JB.17.	054 J 6015	1							Bundy Pipe - Master Cylinder to Union (Front Brakes)		
JB.18.	054 J 6016	1							Bundy Pipe - Master Cylinder to Union (Rear Brakes)		
	054 J 6009					1			Bundy Pipe - Master Cylinder to Rear Union	Up to Chassis No.	
JB.19.	054 J 6006				1	1			Bundy Pipe - Front Union to Rear Union	From Chassis No.	
JB.20.	046 J 6045	1							Bundy Pipe - Rear Union to Flexible Hose, Rear RH		
JB.21.	046 J 6043	1							Bundy Pipe - Rear Union to Flexible Hose, Rear LH		

PLATE Ref. No.	PART No.	QUANTITY					STEERING		DESCRIPTION	CHANGE POINT	BULLETIN REFERENCE
		ALL	ST.	ST. Mk 1	S2.	S2. Fed.	RH	LH			
JB.22.	046 J 6020	2									
	ALFN 060H	2									
	L06W 0000	2						Flexible Hose - Rear Nut) Flexible Hose Retaining Washer)			
JB.23.	046 J 6042	2						Bundy Pipe - Flexible Hose to Rear Brake			
JB.24.	046 J 6046	2						Flexible Hose - Front			
	AUPN 060H	2						Nut) Flexible Hose Retaining Washer)			
	L06W 0000	2									
JB.25.	046 J 6044	2						Bundy Pipe - Flexible Hose to Caliper			
JB.26.	046 J 2000	1						Mounting Bracket - Flexible Hose LH			
JB.27.	046 J 2001	1						Mounting Bracket - Flexible Hose RH			
JB.28.	054 J 6013					1		Banjo Bolt			
JB.29.	054 J 6012					1		Banjo Bolt			
	054 J 6014					1		Seal Ring			
	026 J 6017					2		Seal Ring			
JB.30.	054 J 6011					2		Banjo Union			
JB.31.	036 J 6016					2		Union - 3 way			
	A054 J 6036					1		Plug) (Federal Cars only) Washer)			
	036 J 6059					1					
	046 J 6017	1						Union - 4 way			
JB.32.	046 J 6025	1						Switch - Brake Lights			
	036 J 6059	1						Seal Ring - Brake Lights Switch			
JB.33.	054 J 0103	1					+	Support Bracket - Handbrake			
	XUPS 0508	2						Screw)			
	A05W 1006	2						Washer) Support Bracket to Body			
	YUPN 050P	2						Nut)			
	XUPS 0508	1						Screw)			
12.70	YUPN 050P	*						Nut) Handbrake Lever to Support Bracket			

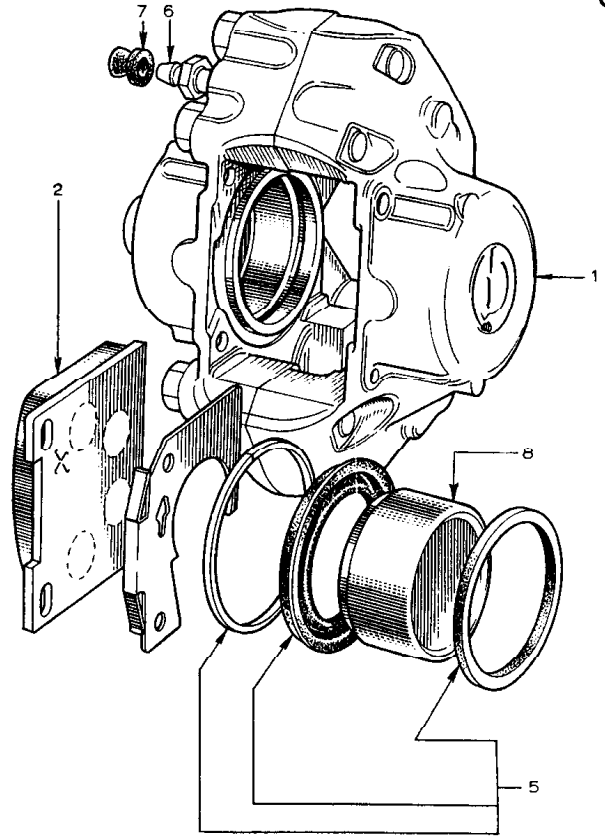
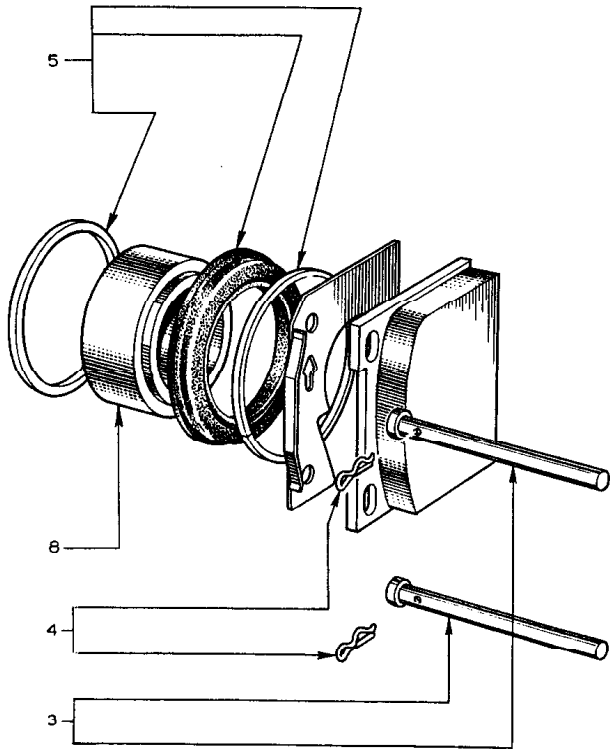


PLATE Ref: No.	PART No.	QUANTITY					STEERING		DESCRIPTION	CHANGE POINT	BULLETIN REFERENCE
		ALL	SI.	SI. Mk	S2.	S2. Fed.	RH	LH			
	036 J 6006	1									
JC.1.	036 J 6071	1						Replaced by 036 J 6071			
	036 J 6007	1						Caliper LH less pads			
	036 J 6072	1						Replaced by 036 J 6072			
JC.2.	046 J 6038	1						Caliper RH - less pads			
JC.3.	036 J 6011	4						Brake Pad Set			
JC.4.	036 J 6012	4						Pin - Pad Retaining			
JC.5.	036 J 6003	AR						Clip - Pad Retaining			
JC.6.	036 J 6004	2						Repair Kit - Front Caliper			
JC.7.	036 J 6005	2						Bleed Screw			
JC.8.	026 J 6041	4						Dust Cover - Bleed Screw			
								Piston			

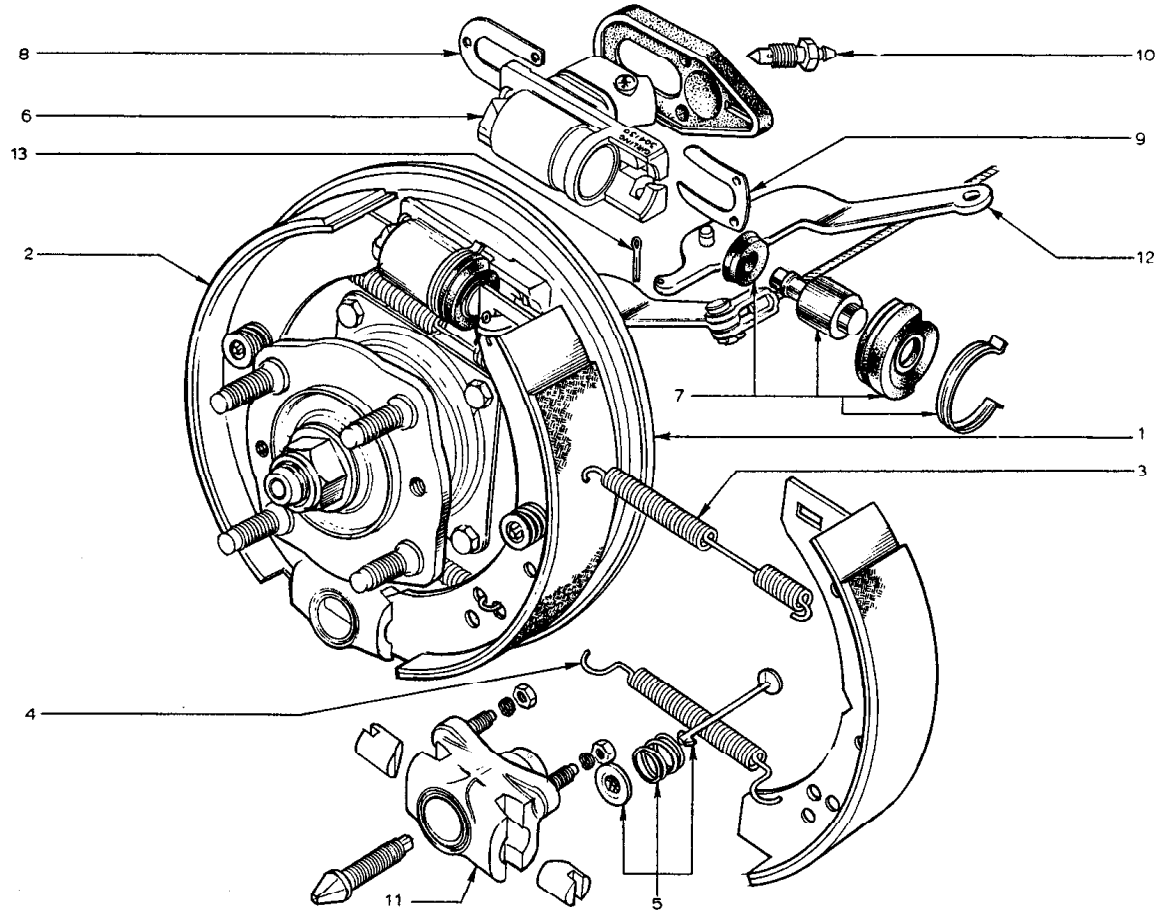


PLATE Ref: No.	PART No.	QUANTITY					STEERING		DESCRIPTION	CHANGE POINT	BULLETIN REFERENCE
		ALL	ST.	ST. Mk 1	S2.	S2. Fed.	RH	LH			
	046 J 6021	1							Rear Brake Assembly LH		
	046 J 6022	1							Rear Brake Assembly RH		
JD.1.	046 J 6000	1							Backplate LH		
	046 J 6001	1							Backplate RH		
JD.2.	046 J 6002	4							Brake Shoe		
JD.3.	046 J 6003	2							Return Spring - Upper		
JD.4.	046 J 6004	2							Return Spring - Lower		
JD.5.	046 J 6046	4							Steady Rest		
JD.6.	046 J 6005	2							Wheel Cylinder		
JD.7.	046 J 6006	AR							Repair Kit - Wheel Cylinder		
JD.8.	046 J 6009	2							Retaining Plate		
JD.9.	046 J 6010	2							Locking Plate		
JD.10.	046 J 6004	2							Bleed Screw		
JD.11.	046 J 6011	2							Adjuster Assembly - Brake Shoe		
	XUFS 0516	8							Screw)		
	LOS W 0000	8							Washer) Brake Assembly to Radius Arm		
JD.12	046 J 6007	2							Lever - Handbrake		
JD.13.	W 0086	2							Split Pin		

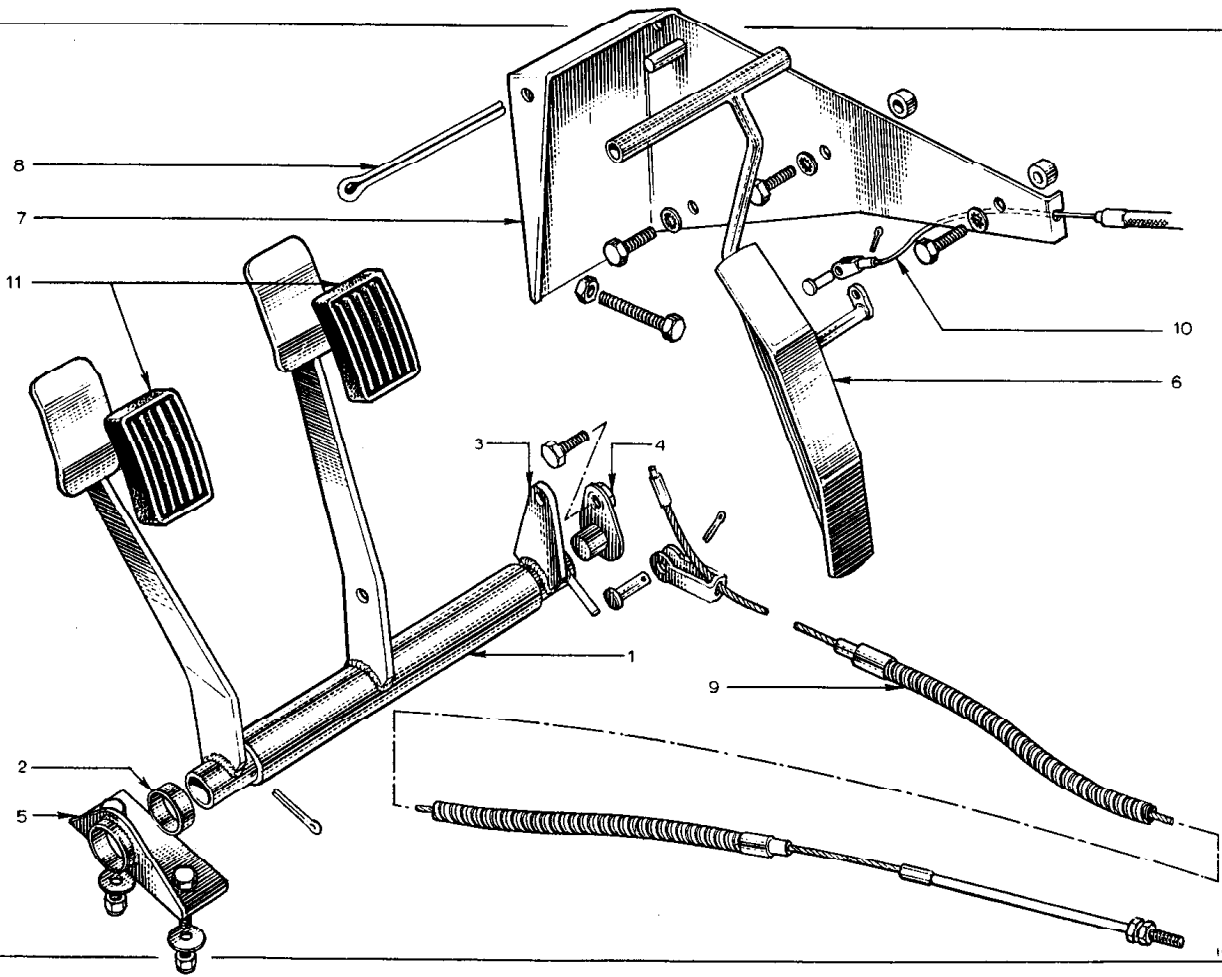


PLATE Ref. No.	PART No.	QUANTITY					STEERING		DESCRIPTION	CHANGE POINT	BULLETIN REFERENCE
		ALL	Sl.	Sl. Mk 1	Sz.	Sz. Fed.	RH	LH			
JE.1.	046 J 0707		1	1				+	Pedal Assembly		
JE.2.	046 J 6027		1	1				+	Bushing - Clutch Pedal Shaft		
JE.3.	046 J 0073		1	1				+	Spizot Plate		
JE.4.	046 J 6026		1	1				+	Support Bush - Brake Pedal		
	XUPS 0412		1	1				+	Screw)	Support Bush to Chassis	
	104W 0000		1	1				+	Washer)		
JE.5.	046 J 0030		1	1				+	Pedal Mounting Bracket		
	YUPN 040P		2	2				+	Nut)	Mounting Bracket to Body	
	A04W 0905		2	2				+	Washer)		
JE.6.	046 S 0702		1	1				+	Throttle Pedal Assembly		
JE.7.	046 S 0081		1	1				+	Mounting Bracket - Throttle Pedal		
JE.8.	046 S 6016		1	1				+	Pivot Pin		
	XUPS 0412		3	3				+	Screw)	Throttle Pedal Mounting Bracket to Body	
	104W 0000		3	3				+	Washer)		
	XUPS 0416		1	1				+	Screw)	Throttle Stop	
	AUPN 040H		1	1				+	Nut)		
JE.9.	046 Q 0025		1	1				+	Clutch Cable		
	W 0084		1	1					Clevis Pin)	Clutch Cable to Pedal	
	W 0086		1	1					Split Pin)		
JE.10.	046 S 0702		1	1					Throttle Cable		
	W 0084		1	1					Clevis Pin)	Throttle Cable to Pedal	
	W 0086		1	1					Split Pin)		
	036 J 6011		-	-					Replaced by 036 J 6029		
JE.11.	036 J 6029	2							Pedal Rubber		
03.70											

JF

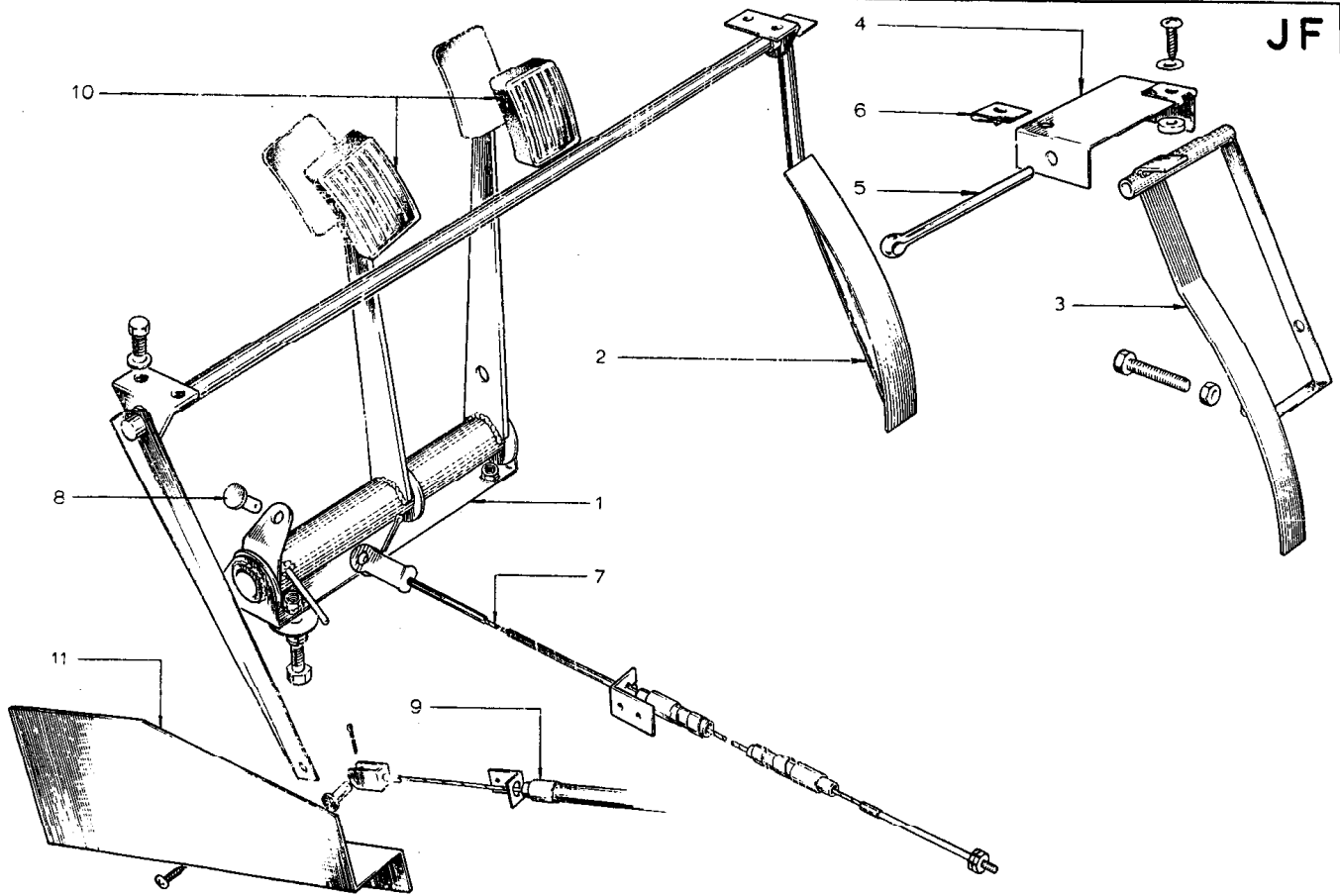


PLATE Ref: No.	PART No.	QUANTITY					STEERING		DESCRIPTION	CHANGE POINT	BULLETIN REFERENCE
		ALL	Sl.	Sl. Mk 1	S2.	S2. Fed.	RH	LH			
	054 J 0707				-	-		-	Replaced by A054 J 0707		
	A054 J 0707				1	1		+	Pedal Assembly		
JF.1.	054 J 0708				1	1		+	Pedal Assembly		
	XUFS 0406				4	4			Screw)		
	LO4W 0000				4	4			Washer) Pedal Mounting		
	AD4W 1606				4	4			Washer)		
JF.2.	A054 S 0708				1			+	Throttle Pedal		
	XUFS 0310				4			+	Screw)		
	A03W 0806				4			+	Washer) Throttle Pedal Mounting		
JF.3.	054 S 0722				1	1		+	Throttle Pedal		
JF.4.	054 S 0081				1	1		+	Mounting Bracket - Throttle Pedal		
JF.5.	046 S 6016				1	1		+	Pivot Pin)		
JF.6.	054 B 6015				2	2		+	Nut)		
	PSTS 1012				2	2		+	Screw) Throttle Pedal Mounting		
	A03W 0806				2	2		+	Washer)		
	046 Q 0025	1						+	Clutch Cable		
JF.7.	046 Q 0026	1						+	Clutch Cable		
JF.8.	W 0084	1							Clevis Pin)		
	W 0086	1							Split Pin) Clutch Cable to Pedal		
JF.9.	054 S 0702				1	1			Throttle Cable		
	W 0084	1							Clevis Pin)		
	W 0086	1							Split Pin) Throttle Cable to Pedal		
JF.10.	036 J 6029	2							Pedal Rubber		
03.70											

PLATE Ref: No.	PART No.	QUANTITY					STEERING		DESCRIPTION	CHANGE POINT	BULLETIN REFERENCE
		ALL	ST.	ST. Mk 1	S2.	S2. Fed.	RH	LH			
JP.11.	054 S 0121				1		+		Cover Plate - Throttle Pedal		
	PSIS 0816				3		+		Screw - Cover Plate Mounting		
	XUCB 0420				1	1		+	Screw) Throttle Stop		
	LUCN 040F				1	1		+	Nut)		