

LOTUS

EUROPA SPECIAL

Owners Handbook Supplement

This Supplement should be read in conjunction with the Lotus Europa Twin Cam Owners Handbook

LOTUS CARS LTD.

Norwich

Norfolk

Nor 92W

England

Telephone: Wymondham 3411

Telex: 97401

Cables Lotus Norwich

Part Number B074 T 0324A

© Lotus Cars Ltd 1972

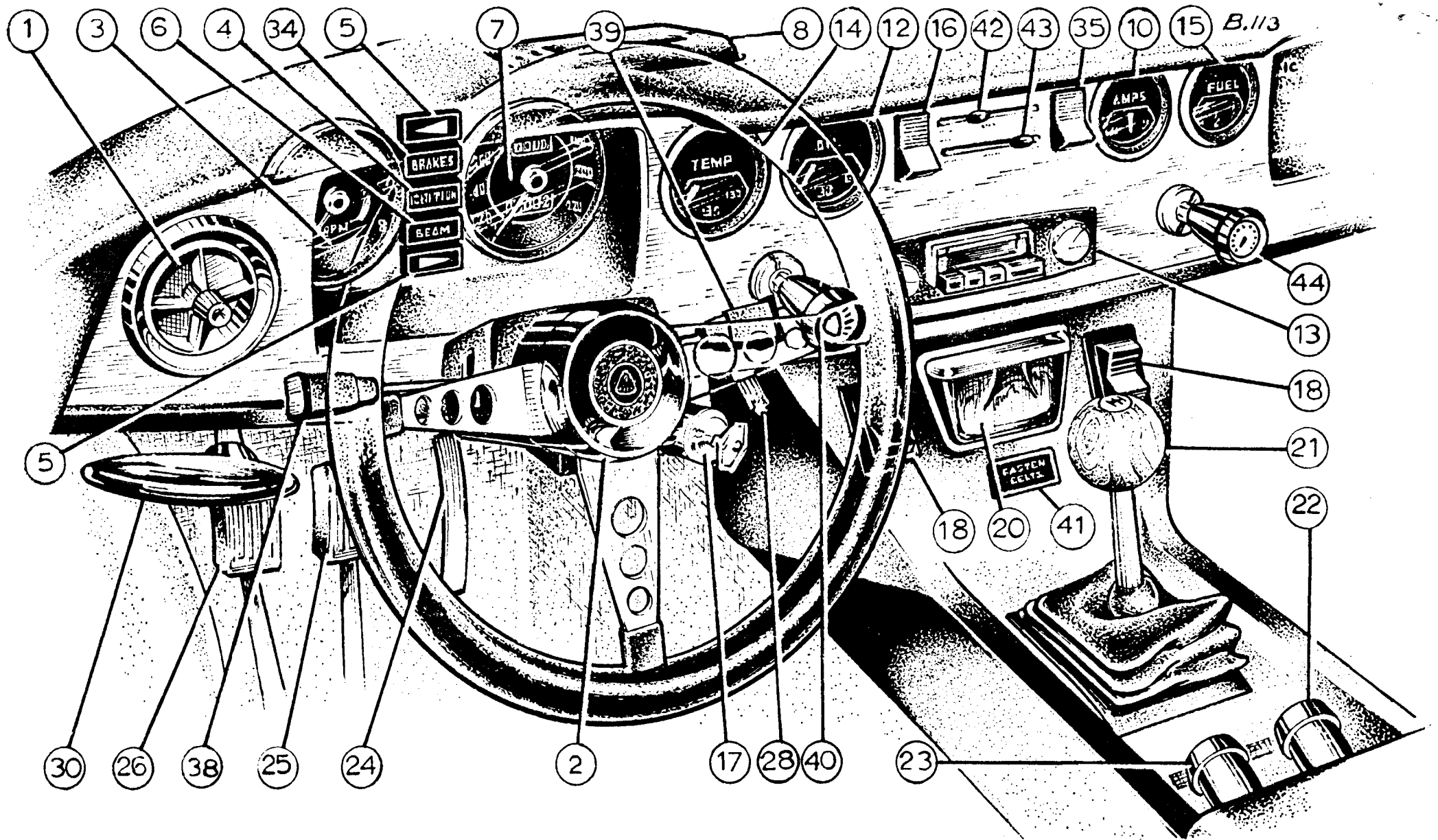


Fig. 1—L.H.D. Facia panel and controls (North America only).

Key to Fig. 1

1. Face level ventilator
2. Steering wheel
3. Tachometer
4. Ignition warning lamp
5. Direction indicator warning lamps
6. Headlamps main beam warning lamp
7. Speedometer
8. Windscreen demister vent
10. Ammeter
12. Oil pressure gauge
13. Radio (when fitted)
14. Water temperature gauge
15. Fuel gauge
16. Heater fan switch
17. Ignition/starter switch and lock
18. Window operating switches
20. Ashtray
21. Gearshift lever
22. Choke control
23. Heater temperature control
24. Accelerator pedal
25. Brake pedal
26. Clutch pedal
28. Speedometer trip control
30. Handbrake
34. Brakes warning lamp
35. Hazard warning switch
38. Horn, direction indicators and headlamps switch
39. Windscreen wiper/washer control
40. Lighting switch
41. Seat belts "fasten" warning lamp
42. Heater air direction control, driver
43. Heater air direction control, passenger
44. Panel lamps switch

21—Gearshift lever—Type 365 transmission (5-speed)

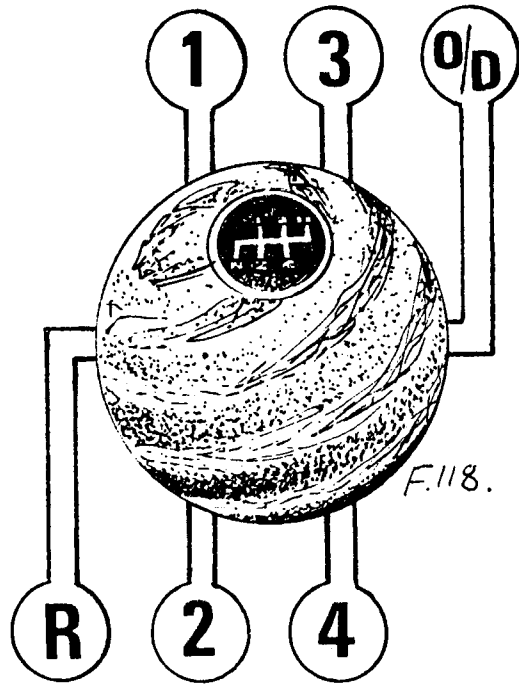


Fig. 2—Type 365 transmission gearshift.

This transmission is available as a Factory-fitted option.

First and second gears are selected by moving the lever to the left until resistance is felt, and engaged by moving it forwards for first gear and rearwards for second gear. Third and fourth gears are selected by moving the lever to the right, through neutral position until resistance is felt, then forwards for third gear and backwards for fourth gear.

To engage overdrive (fifth) gear, move the lever to the right in the neutral position until resistance is felt, push the lever against the spring pressure and move it forwards to engage the gear.

To engage reverse gear, move the lever to the left in the neutral position until resistance is felt, push the lever against the spring pressure and move it rearwards to engage the gear.

38—Horn, direction indicators and headlamp switch (North American cars only)

Horn:

Push in the lever towards the steering column and release (A).

Direction Indicators:

Move lever FULLY up for right-hand turn (B) and FULLY down for left-hand turn (C). Switch will automatically cancel when steering wheel is moved to execute the turn.

For "lane changing", move lever up (D) to FIRST position and hold for right-hand change, and down (E) to FIRST position, holding for left-hand change.

Headlamps:

Main beam is obtained with the lever in the downwards (F) position; to select dipped beam move the lever upwards (G). Note that these positions are only operative when the lighting switch (40 of Fig. 1) is in operation. Lifting the lever towards the steering wheel flashes the headlamps main beams irrespective of the position of the lighting switch (H). When the headlamps are on main beam, a warning lamp (6 of Fig. 1) on the facia will illuminate.

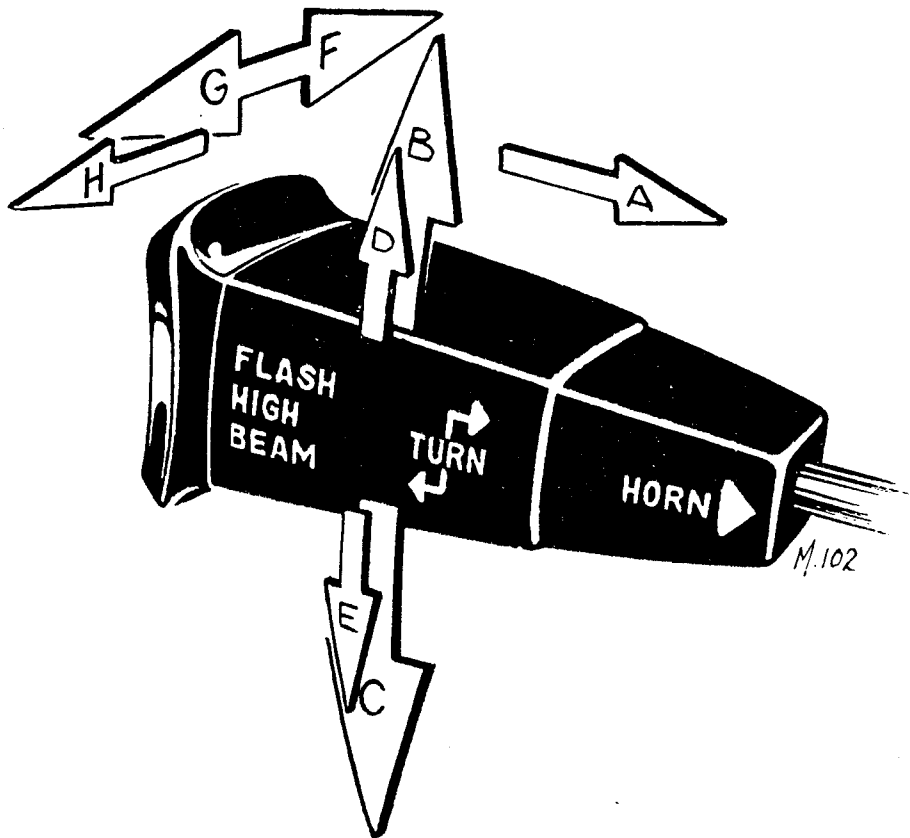


Fig. 4—Horn, indicators and headlamp switch.

39—Combined “2-speed” windscreen wiper/washer control (North American cars only)

To operate the windscreen wipers, move the lever downwards to the FIRST position (A). The wiper speed can be increased by moving the lever further downwards to the SECOND position (B).

If the blades become obstructed by, for example, ice or packed snow on the windscreen, the wipers should be “switched off” to prevent damage to the internal mechanism, the obstruction cleared, and the wipers “switched on” again.

If it is desired to “flick wipe” the windscreen, move the lever UP (C) and hold for the duration of the wipe. On release, the lever will automatically cancel and return to the “off” position, the blades returning to their normal parked position.

To use the screen washer, push in the lever towards the steering column (D), and release.

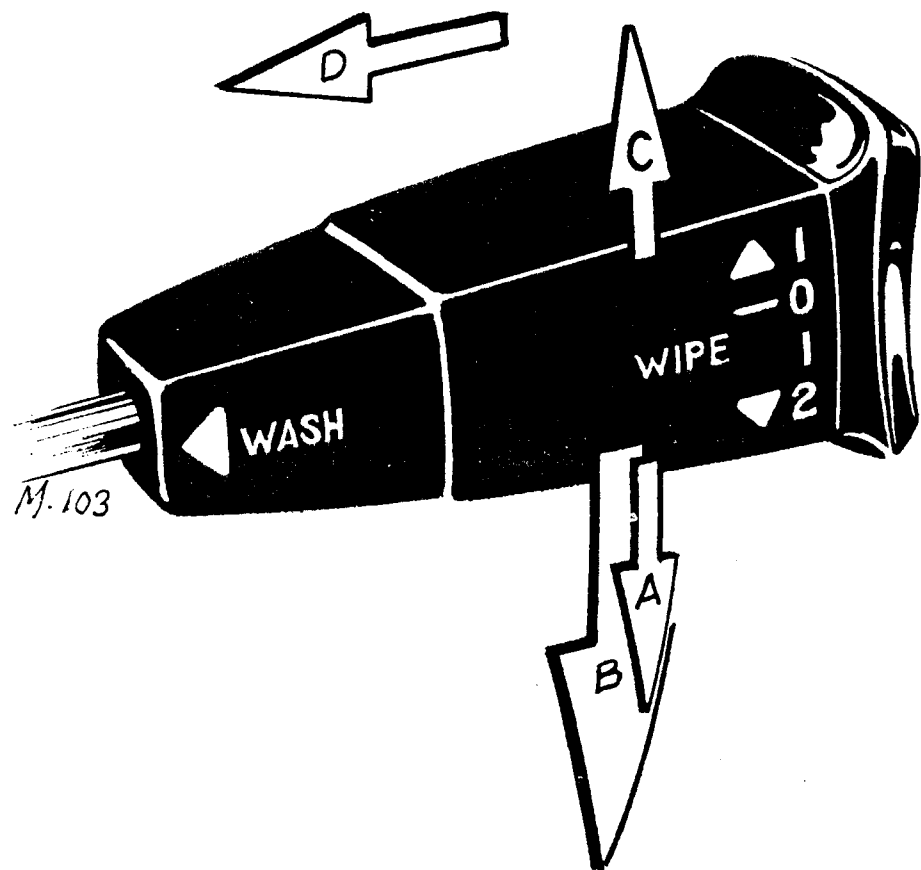


Fig. 3—Windscreen wiper/washer control.

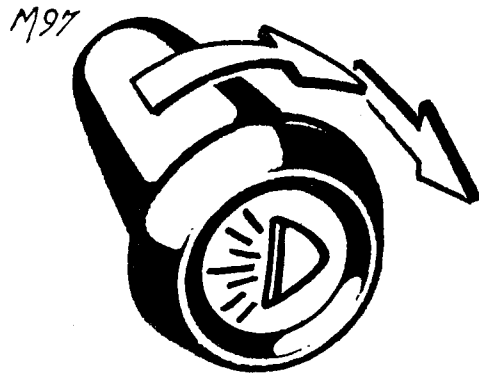


Fig. 5—Lighting switch.

40—Lighting switch (North American cars only)

Turn knob fully to the right, in direction of arrows (Fig. 5), to switch "on" the side, rear and tail lamps; pull the knob fully out while in the turned position, to energize the headlamps.

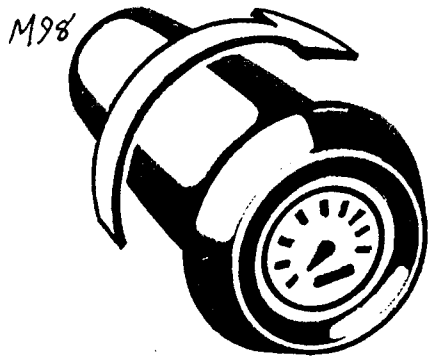


Fig. 6—Panel lamps switch.

44—Panel lamps switch (North American cars only)

Turn the knob to the right, in the direction of arrow (Fig. 6), to illuminate the panel lamps.

The switch incorporates a rheostat which, when the knob is turned further to the right, reduces the glow from the lamps. Note that the switch is only operative when the lighting switch is in operation.

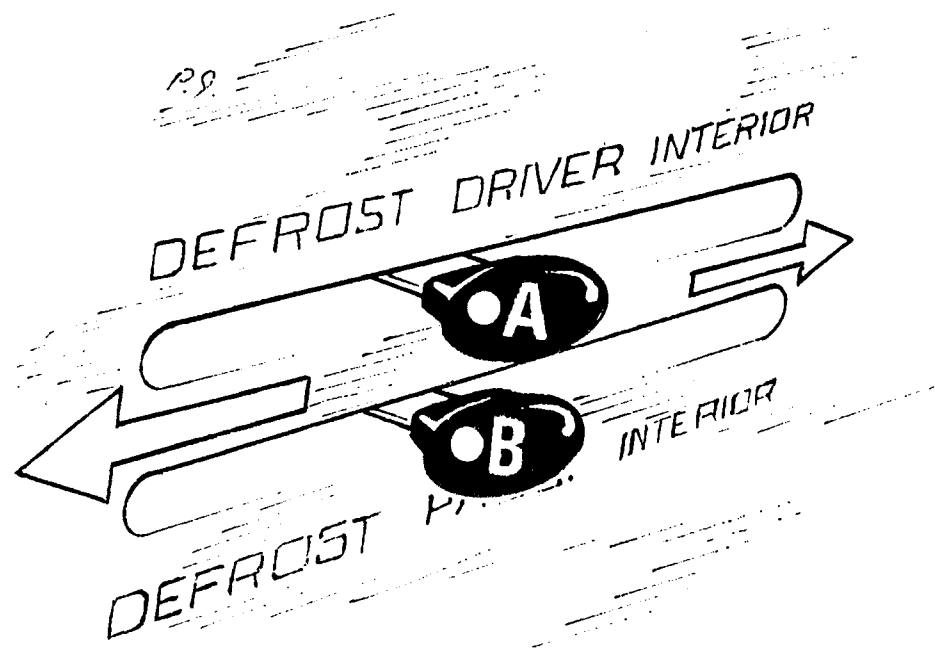


Fig. 7—Heater controls.

42, 43—Heater controls (North American cars only)

Interior heating and ventilating can be controlled individually by both driver (A) and passenger (B) alike, using the control levers as shown (see Fig. 7).

Air can be delivered, hot or cold and at any intermediate temperature, to the screen (DEFROST), through the screen vents (8 of Fig. 1), or to the occupants' feet (INTERIOR), depending upon requirements.

Temperature is controlled by pulling out the knob (23 of Fig. 1) from the cold position when fully in, to the hot position when fully out.

The demisters are fed with air at all times, but in order to dispel heavy misting, or to defrost the screen, move both control levers to "DEFROST".

34—Brakes warning lamp (North American cars only)

This warning lamp serves a twofold purpose, in that it is:

- a. Handbrake "on" warning lamp.
 - b. Brake fail warning lamp.
- a. With the ignition "on" and the handbrake applied, the warning lamp will be illuminated. The action of applying and releasing the handbrake serves as a test switch for the brake fail warning lamp.
 - b. In the event of any failure within the hydraulic system, the warning lamp will be illuminated.

TECHNICAL SPECIFICATION

(differences from main Handbook only)

ENGINE

Ignition timing (static):

Dellorto carburettors 12° B.T.D.C.

Zenith-Stromberg carburettors 5° B.T.D.C.

TRANSMISSION

Overall ratios (synchromesh on all forward gears):

	5-speed	4-speed
O/D (5th)	3·289	N/A
4th	4·574	3·666
3rd	6·086	5·268
2nd	8·807	8·010
1st	13·646	12·851